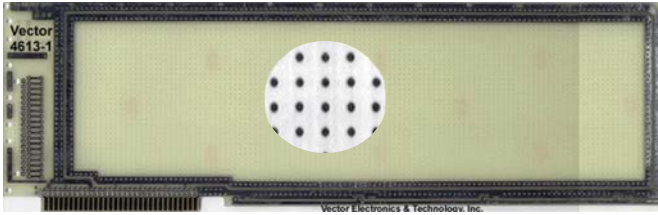


IBM PC, XT



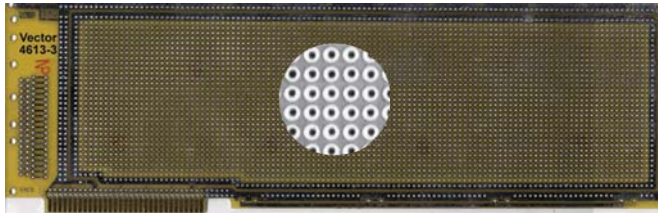
4613-1

Circuit Pattern:
Contacts:
Width/Thick:
Height:
16-Pin DIP Capacity:
Material:
V/G Terminals:
Socket Pins:
Extender:
Hole Diameter:

IBM PC, XT

Peripheral Buses
31/62 @ .1" Ctrs
Ni/Gold
13.25" / .062"
4.2"
93
FR4 Epoxy Glass
T44, T46, T49, T68
R32
3690-26
.042"

- 0.100" grid
- Voltage and ground buses around board perimeter, both sides
- Auxiliary bus line along lower edge of board, both sides
- I/O mounting area for 37-pin D-subminiature and ribbon cable connectors
- Mounting Bracket and hardware kit included (HD36B)
- Layout paper and instructions included



4613-3

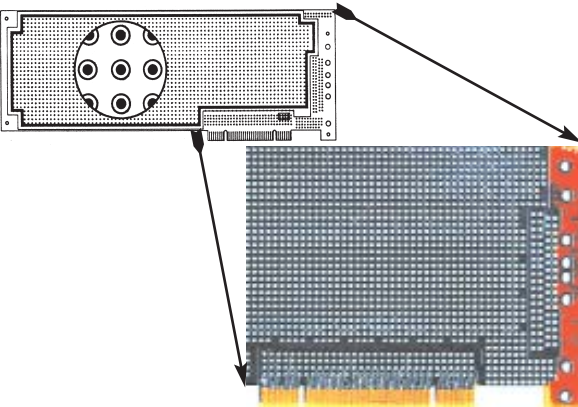
Circuit Pattern:
Contacts:
Width/Thick:
Height:
16-Pin DIP Capacity:
Material:
V/G Terminals:
Socket Pins:
Extender:
Hole Diameter:

IBM PC, XT

Pad-Per-Hole
31/62 @ .1" Ctrs
Ni/Gold
13.25" / .062"
4.2"
154
FR4 Epoxy Glass
T44, T46, T49, T68
R32
3690-26
.042"

- 0.100" grid
- Plated-thru holes
- Voltage and ground buses around board perimeter
- I/O mounting area for 37-pin D-subminiature and ribbon cable connectors
- Mounting Bracket and hardware kit included (HD36B)

Plugbordrd



PCI

4624-3

4624-4

(Same as 4624-3 but no overall GND between pads)

Circuit Pattern:
Contacts:
Width/Thick:
Height:
16-Pin DIP Capacity:
Material:
V/G Terminals:
Extender:
Hole Diameter:

PCI Expansion Card

Pad-Per-Hole & Peripheral Buses
120 @ 0.05" Ctrs
Ni/Gold
12.28" (std. size inc. extender portion of 1.06") / .062"
4.5"
79 plus PGAs
FR4 Epoxy Glass
T125, T126
3690-34-5V or -3V
.042"

- 0.100" grid
- For 32-bit environment, ISA format, 4 layer board
- Universal etched tab geometry fits both 3.3V and 5.0V tab notch patterns
- Mounting Bracket included
- Peripheral buses for voltage and ground distribution
- Isolated pads with plated thru holes
- I/O mounting area for D-subminiature and ribbon cable connectors

Mounting Bracket Kit

HD36B

Mounting Bracket Kit with hardware for IBM PC, AT & EISA P.C. boards.
Pattern has "knock out" cutouts for "D" subminiature connectors.

