

TERMINAL NUMBER

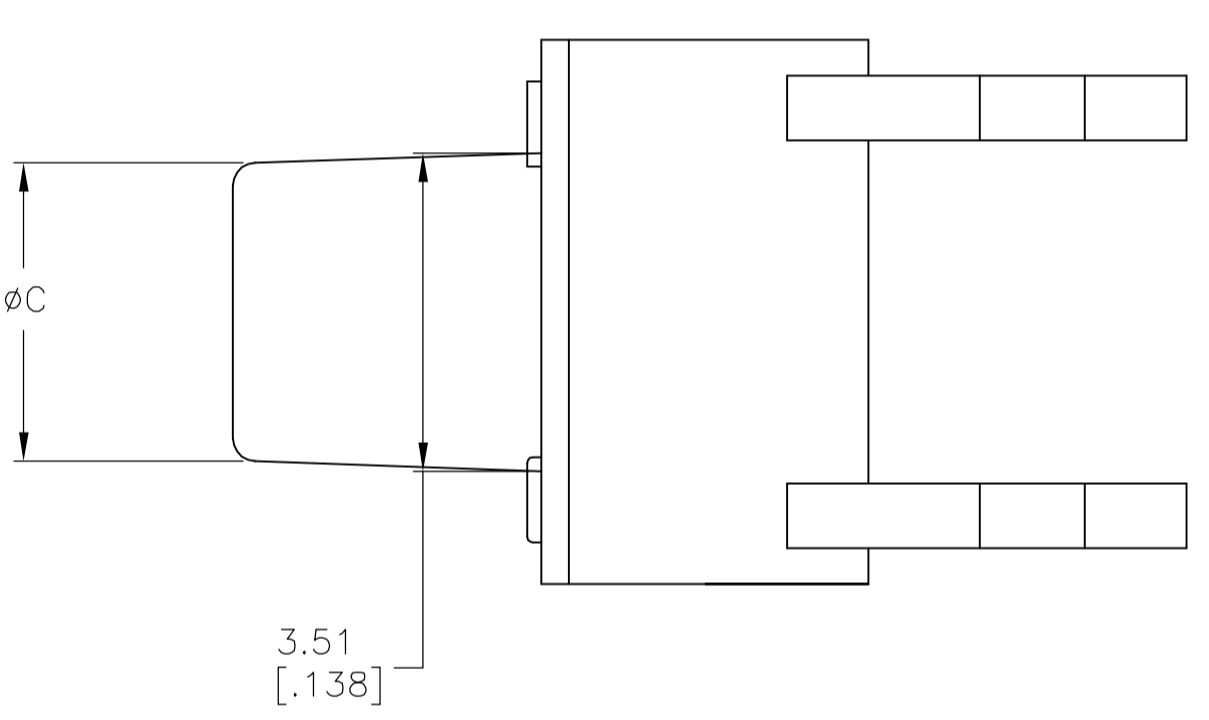
SPECIFICATIONS:
MATERIALS:
 CASE: NYLON 66 UL94HB, 30% GF-BLACK
 ACTUATOR: NYLON OR PPS UL94V-0, SEE P/N TABLE
 COVER: STEEL-TIN PLATE
 MOVING CONTACT: COPPER ALLOY-SILVER FINISH
 FIXED CONTACT/TERMINAL: COPPER ALLOY-SILVER OVER NICKEL FINISH

ELECTRICAL:
 MAX CONTACT RATING, 50MA@12VDC
 MIN CONTACT RATING, 10 MICROAMP @ 1V DC
 INITIAL CONTACT RESISTANCE, 100 MILLIOHMS MAX
 INSULATION RESISTANCE, 100 MEGOHM MIN. @ 100V DC
 DIELECTRIC STRENGTH, 500 V AC FOR 1 MINUTE
 LIFE EXPECTANCY, 100,000 CYCLES MIN (2 CYCLES PER SECOND AND 150% ACTUATION FORCE), EXCEPT FOR THE 520 GF MODEL WHICH WOULD BE 50,000 CYCLES MIN.

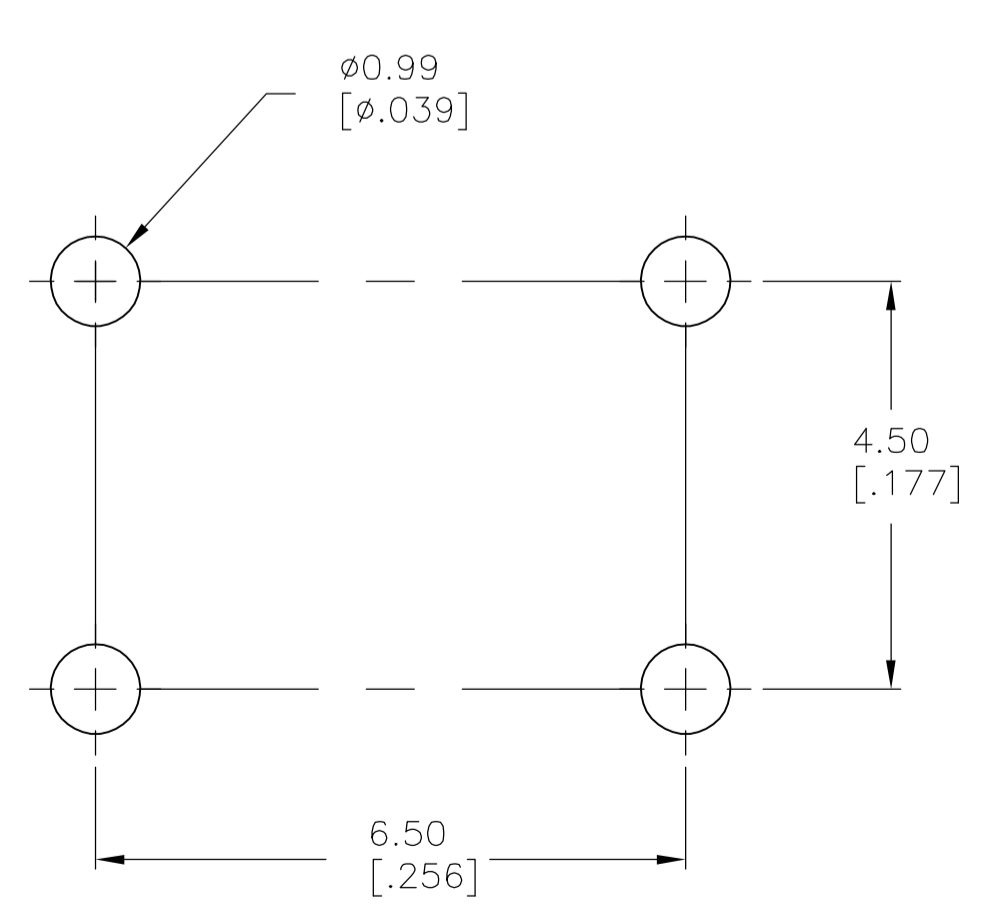
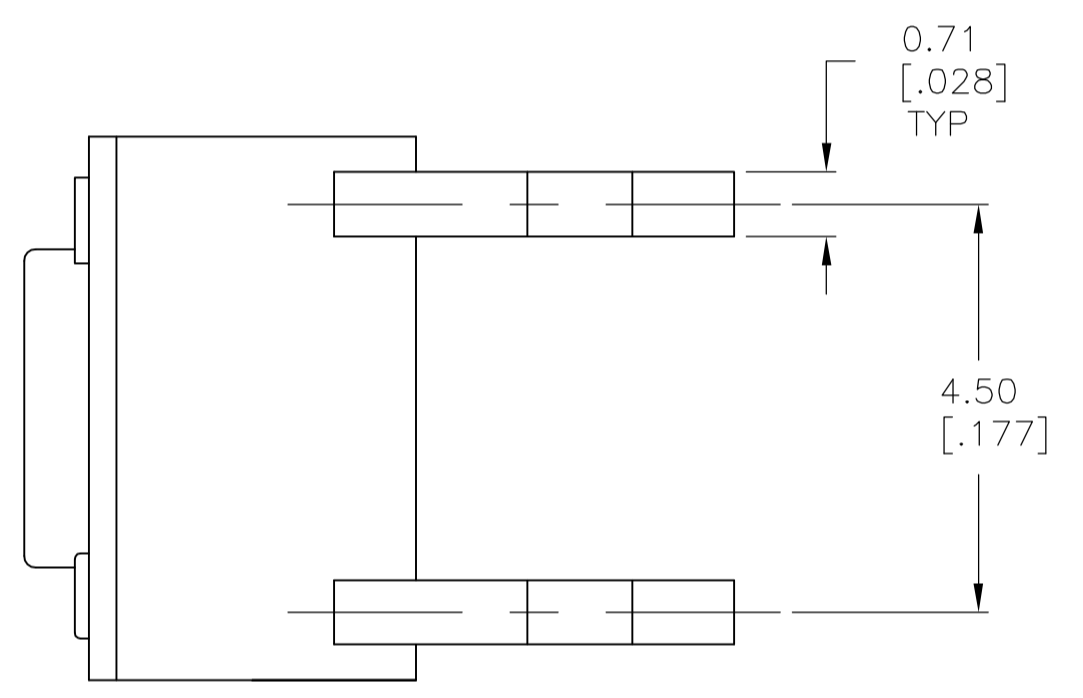
MECHANICAL:
 ACTUATION FORCE, SEE TABLE
 ACTUATION TRAVEL, .010 +.008/-.004
 LIFE EXPECTANCY, 100,000 CYCLES MIN (2 CYCLES PER SECOND AND 150% ACTUATION FORCE), EXCEPT FOR THE 520 GF MODEL WHICH WOULD BE 50,000 CYCLES MIN.

ENVIRONMENTAL:
 OPERATING TEMPERATURE, -35 TO +85 DEGREES C
 STORAGE TEMPERATURE, -35 TO +85 DEGREES C
 THERMAL SHOCK, PER EIA-364-32C, -35 TO +85 DEGREES C
 SOLDERABILITY, PER EIA-364-52, CLASS 2, CATEGORY 1, CATEGORY 2, 95% MINIMUM COVERAGE
 RESISTANCE TO SOLDER HEAT, PER 109-202, CONDITION B

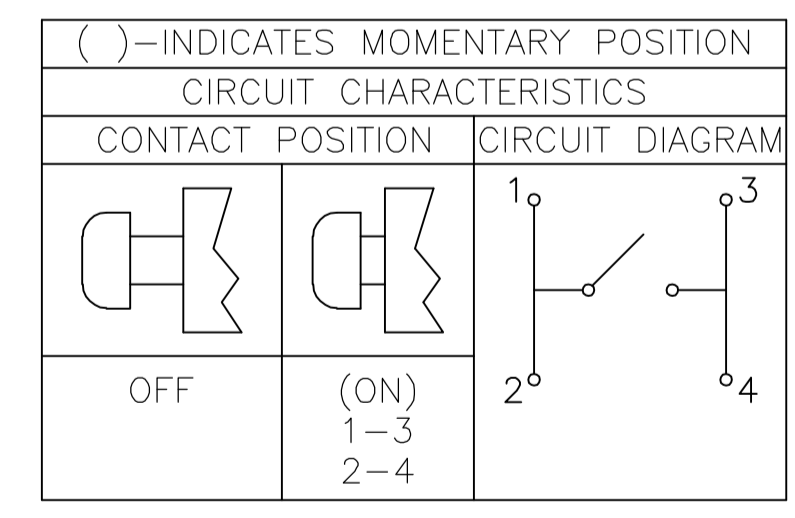
Notes:
 1. ALL MATERIALS AND FINISHES SHALL COMPLY WITH EU DIRECTIVE 2002/95/EC OF 27JAN2003 (ROHS).



VIEW A-A
 FSM6J THRU FSM18J



RECOMMENDED HOLE LAYOUT
 TOLERANCE ±0.05[.002] UNLESS OTHERWISE NOTED



ACTUATOR MATERIAL	ACTUATOR COLOR	ACTUATOR FORCE	DIM C	DIM B	DIM A	ALCO P/N	TYCO PART NUMBER
NYLON 6T	YELLOW	520 +/-100 GF	3.09 [.122]	8.50 [.335]	4.90 [.193]	FSM18JAAH	3-1825910-7
NYLON 6T	WHITE	260 +/-50 GF	3.09 [.122]	8.50 [.335]	4.90 [.193]	FSM18JAH	3-1825910-6
PPS	BLACK	160 +/-50 GF	3.09 [.122]	8.50 [.335]	4.90 [.193]	FSM18JH	3-1825910-5
PPS	BROWN	100 +/-50 GF	3.09 [.122]	8.50 [.335]	4.90 [.193]	FSM18JLH	3-1825910-4
NYLON 6T	YELLOW	520 +/-100 GF	2.80 [.110]	17.00 [.669]	13.40 [.527]	FSM16JAAH	3-1825910-3
NYLON 6T	WHITE	260 +/-50 GF	2.80 [.110]	17.00 [.669]	13.40 [.527]	FSM16JAH	3-1825910-2
PPS	BLACK	160 +/-50 GF	2.80 [.110]	17.00 [.669]	13.40 [.527]	FSM16JH	3-1825910-1
PPS	BROWN	100 +/-50 GF	2.80 [.110]	17.00 [.669]	13.40 [.527]	FSM16JLH	3-1825910-0
NYLON 6T	YELLOW	520 +/-100 GF	2.87 [.118]	13.00 [.512]	9.40 [.370]	FSM14JAAH	2-1825910-9
NYLON 6T	WHITE	260 +/-50 GF	2.87 [.118]	13.00 [.512]	9.40 [.370]	FSM14JAH	2-1825910-8
PPS	BLACK	160 +/-50 GF	2.87 [.118]	13.00 [.512]	9.40 [.370]	FSM14JH	2-1825910-7
PPS	BROWN	100 +/-50 GF	2.87 [.118]	13.00 [.512]	9.40 [.370]	FSM14JLH	2-1825910-6
NYLON 6T	YELLOW	520 +/-100 GF	3.20 [.126]	8.00 [.315]	4.40 [.173]	FSM12JAAH	2-1825910-5
PPS	BLACK	260 +/-50 GF	3.20 [.126]	8.00 [.315]	4.40 [.173]	FSM12JABH	2-1825910-4
NYLON 6T	WHITE	260 +/-50 GF	3.20 [.126]	8.00 [.315]	4.40 [.173]	FSM12JAH	2-1825910-3
PPS	BLACK	160 +/-50 GF	3.20 [.126]	8.00 [.315]	4.40 [.173]	FSM12JH	2-1825910-2
PPS	BROWN	100 +/-50 GF	3.20 [.126]	8.00 [.315]	4.40 [.173]	FSM12JLH	2-1825910-1
NYLON 6T	YELLOW	520 +/-100 GF	3.25 [.128]	7.30 [.287]	3.70 [.146]	FSM10JAAH	1-1825910-0
NYLON 6T	WHITE	260 +/-50 GF	3.25 [.128]	7.30 [.287]	3.70 [.146]	FSM10JAH	1-1825910-9
PPS	BLACK	160 +/-50 GF	3.25 [.128]	7.30 [.287]	3.70 [.146]	FSM10JH	1-1825910-8
PPS	BROWN	100 +/-50 GF	3.25 [.128]	7.30 [.287]	3.70 [.146]	FSM10JLH	1-1825910-7
NYLON 6T	YELLOW	520 +/-100 GF	3.10 [.122]	9.50 [.374]	5.90 [.232]	FSM8JAAH	1-1825910-6
NYLON 6T	WHITE	260 +/-50 GF	3.10 [.122]	9.50 [.374]	5.90 [.232]	FSM8JAH	1-1825910-5
PPS	BLACK	160 +/-50 GF	3.10 [.122]	9.50 [.374]	5.90 [.232]	FSM8JH	1-1825910-4
PPS	BROWN	100 +/-50 GF	3.10 [.122]	9.50 [.374]	5.90 [.232]	FSM8JLH	1-1825910-3
NYLON 6T	YELLOW	520 +/-100 GF	3.30 [.130]	7.00 [.276]	3.40 [.134]	FSM6JAAH	1-1825910-2
NYLON 6T	WHITE	260 +/-50 GF	3.30 [.130]	7.00 [.276]	3.40 [.134]	FSM6JAH	1-1825910-1
PPS	BLACK	160 +/-50 GF	3.30 [.130]	7.00 [.276]	3.40 [.134]	FSM6JH	1-1825910-0
PPS	BROWN	100 +/-50 GF	3.30 [.130]	7.00 [.276]	3.40 [.134]	FSM6JLH	1825910-9
NYLON 6T	YELLOW	520 +/-100 GF	N/A	5.00 [.196]	1.40 [.055]	FSM4JAAH	1825910-8
NYLON 6T	WHITE	260 +/-50 GF	N/A	5.00 [.196]	1.40 [.055]	FSM4JAH	1825910-7
PPS	BLACK	160 +/-50 GF	N/A	5.00 [.196]	1.40 [.055]	FSM4JH	1825910-6
PPS	BROWN	100 +/-50 GF	N/A	5.00 [.196]	1.40 [.055]	FSM4JLH	1825910-5
NYLON 6T	YELLOW	520 +/-100 GF	N/A	4.30 [.169]	0.70 [.028]	FSM2JAAH	1825910-4
NYLON 6T	WHITE	260 +/-50 GF	N/A	4.30 [.169]	0.70 [.028]	FSM2JAH	1825910-3
PPS	BLACK	160 +/-50 GF	N/A	4.30 [.169]	0.70 [.028]	FSM2JH	1825910-2
PPS	BROWN	100 +/-50 GF	N/A	4.30 [.169]	0.70 [.028]	FSM2JLH	1825910-1

THIS DRAWING IS A CONTROLLED DOCUMENT.

DIMENSIONS: mm [INCHES]	TOLERANCES UNLESS OTHERWISE SPECIFIED:	0 PLC ± -	1 PLC ± -	2 PLC ± 0.30 [.012]	3 PLC ± -	4 PLC ± -	ANGLES ± -	FINISH
-------------------------	--	-----------	-----------	---------------------	-----------	-----------	------------	--------

MATERIAL: SEE SPECIFICATIONS

THIS DRAWING IS A CONTROLLED DOCUMENT.

DIN M. BINNER	07NOV06		Tyco Electronics Corporation Harrisburg, PA 17105-3608				
CHK M. SARVER	07NOV06		NAME	6MM TACT SWITCH, THRU-HOLE HIGH TEMP			
APPROV M. SARVER	07NOV06	PRODUCT SPEC	APPLICATION SPEC	SIZE	CAGE CODE	DRAWING NO	RESTRICTED TO
WEIGHT		A1	00779	1825910			
CUSTOMER DRAWING		SCALE	12:1	SHEET	1	OF	1