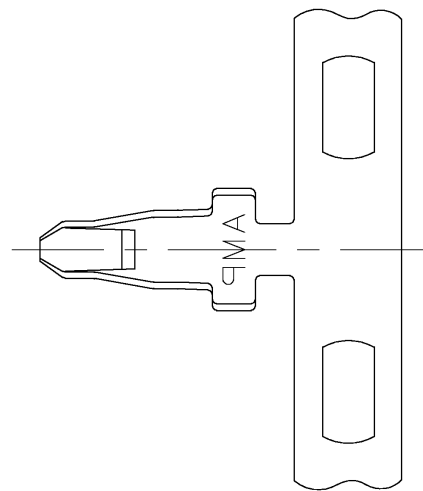
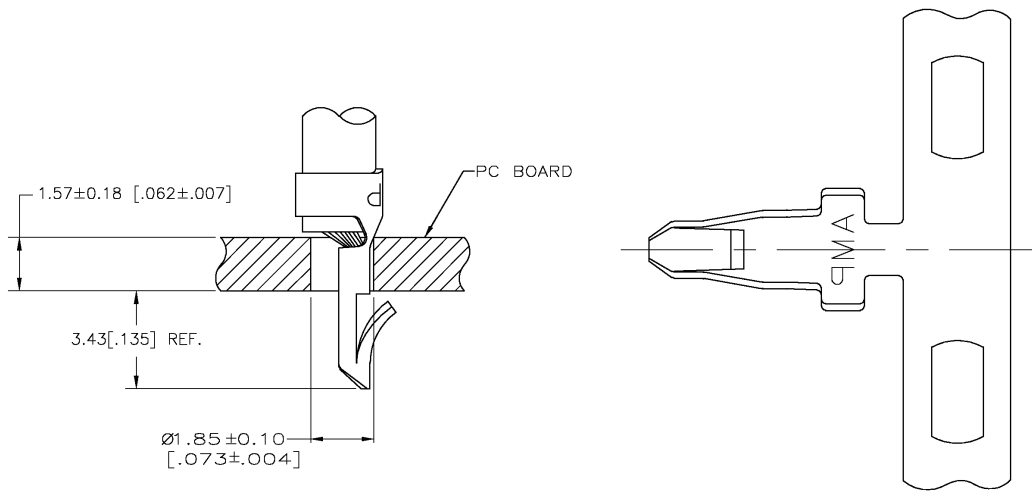
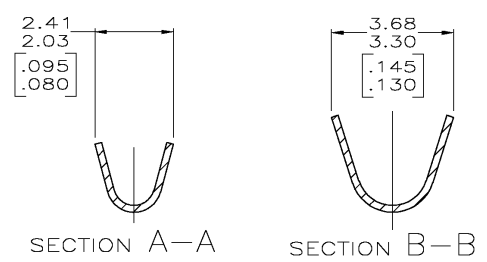
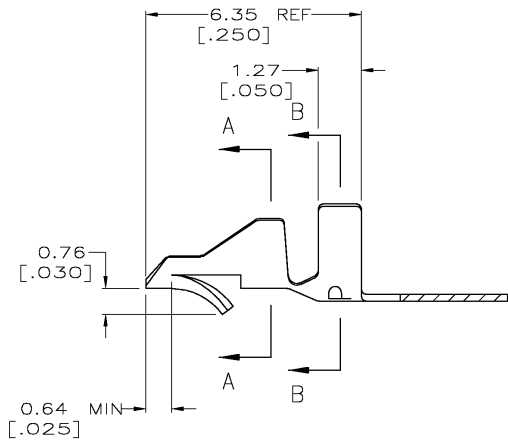
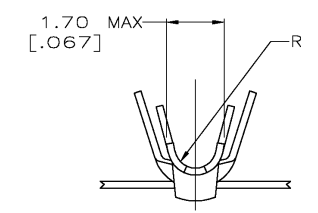


LOC	DISP	REVISIONS			
P	LR	DESCRIPTION	DATE	DWN	APVD
CM	00	AA2	REV PER ECN 0638-0917-03	16-DEC-03	KW JE



- 1 PARTS COMPLY WITH AMP SOLDERABILITY SPEC 109-11-3.
- 2 PARTS COMPLY WITH AMP SOLDERABILITY SPEC 109-11-5.
- 3 PARTS COMPLY WITH AMP SOLDERABILITY SPEC 109-11-1.
- 4 FOR FOREIGN PRODUCTION ONLY.
- 5 CARRIER STRIP TO HAVE 1.52 [.060] DIA PILOT HOLE.
- 6 0.00508 [.000200] MIN BRIGHT TIN-LEAD.
- 7 0.00318 [.000150] MIN MATTE TIN-LEAD OVER 0.00305 [.000120] MIN MATTE COPPER.
- 8 0.00305 [.000120] MIN TIN OVER 0.00102 [.000040] MIN NICKEL.
- 9. WIRE RANGE: 0.3 - 0.9 mm<sup>2</sup> (22 - 18 AWG).
- 10. INSULATION RANGE: 1.52 - 2.79 [.060 - .110] DIA.
- 11. DIMENSIONS IN BRACKETS ARE IN INCHES.
- 12 0.00508 [.000200] MIN BRIGHT TIN.



**METRIC**

1	2	0.20 [.008] PH BRZ	3-350566-1
3 4 5	8	0.20 [.008] BRASS	350566-7
3 4	8	0.20 [.008] BRASS	350566-5
2 4	8	0.20 [.008] BRASS	350566-3
1	6	0.20 [.008] PH BRZ	350566-1
NOTES	FINISH	MATERIAL	PART NO.

THIS DRAWING IS A CONTROLLED DOCUMENT.		DWN S. CARPENTER 20AUG2003	Tyco Electronics Corporation Harrisburg, PA 17105
DIMENSIONS: INCHES		CHK J. ELLIS 20AUG2003	
TOLERANCES UNLESS OTHERWISE SPECIFIED:		APVD J. ELLIS 20AUG2003	NAME MINI AMP-IN™
0 PLC ±	1 PLC ±	PRODUCT SPEC	APPLICATION SPEC
2 PLC ±	3 PLC ± 0.13 [.005]	114-1016	WEIGHT
4 PLC ±	ANGLES ±	A2 00779 ©-350566	RESTRICTED TO
MATERIAL SEE TABLE	FINISH SEE TABLE	CUSTOMER DRAWING	SCALE 10:1 SHEET 1 OF 1 REV AA2

A/C BUSINESS GROUP 3323 177-34 RALPH VESTAL

350566