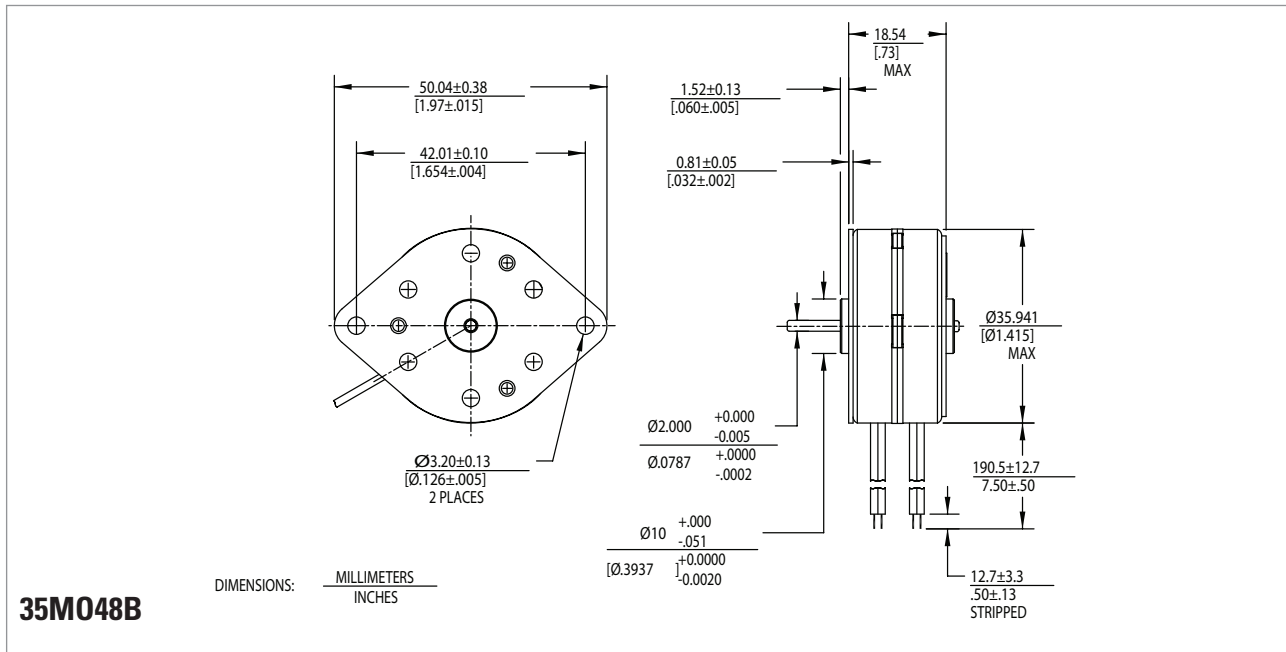


35M048B



Technical Specifications

Part Number	Unipolar		Bipolar		
	35M048B1U	35M048B2U	35M048B1B	35M048B2B	
Rated voltage	(vdc)	5	12	5	12
Resistance per phase ± 10%	(ohms)	12.50	72.00	12.50	72.00
Inductance per phase, Typ	(mH)	7.80	36.00	16.40	86.00
Rated current per phase *	(amps)	0.40	0.17	0.40	0.17
Holding torque, min *	(oz-in / mNm)	2.6 / 18.35		2.8 / 19.76	
Step angle *	(degrees)			7.5 ± 0.5°	
Steps per revolution *				48	
Detent torque, max	(oz-in / mNm)			0.30 / 2.2	
Thermal resistance	(°C / watt)			N.A.	
Rotor moment of inertia	(oz-in-s ² / g-cm ²)			0.0109 / 2	
Ambient temperature range					
Operating	(°C)			-20 ~ +40	
Storage	(°C)			-40 ~ +85	
Bearing type				Sintered Bronze Sleeve	
Insulation resistance at 500vdc	(vac)			100 megohms	
Dielectric withstanding voltage	(lbs / g)			650 for 2 seconds	
Weight				.175 / 79	
Shaft load ratings, max at 1500 rpm					
Radial	(lbs / kg)			.055 / .025	
Axial	(lbs / kg)			.055 / .025	
Leadwires				AWG 26, UL 1430	
Temperature class, max				B(130°C)	
RoHS				Compliant	

All motor data values at 25°C unless otherwise specified

* Energise at rated current, 2 phase on