

NOMINAL WEIGHT
.4 GRAM

DIMENSIONS IN MILLIMETERS (INCHES)

ISSUE
A

KNOWLES ELECTRONICS

KNOWLES ELECTRONICS, INC. ITASCA, ILLINOIS U.S.A.

KNOWLES ELECTRONICS, CO., BURGESS HILL, SUSSEX, ENGLAND

SCALE: 2:1

DO NOT SCALE DRAWING

DR. BY	DATE
AB	3-2-04

CK. BY	DATE

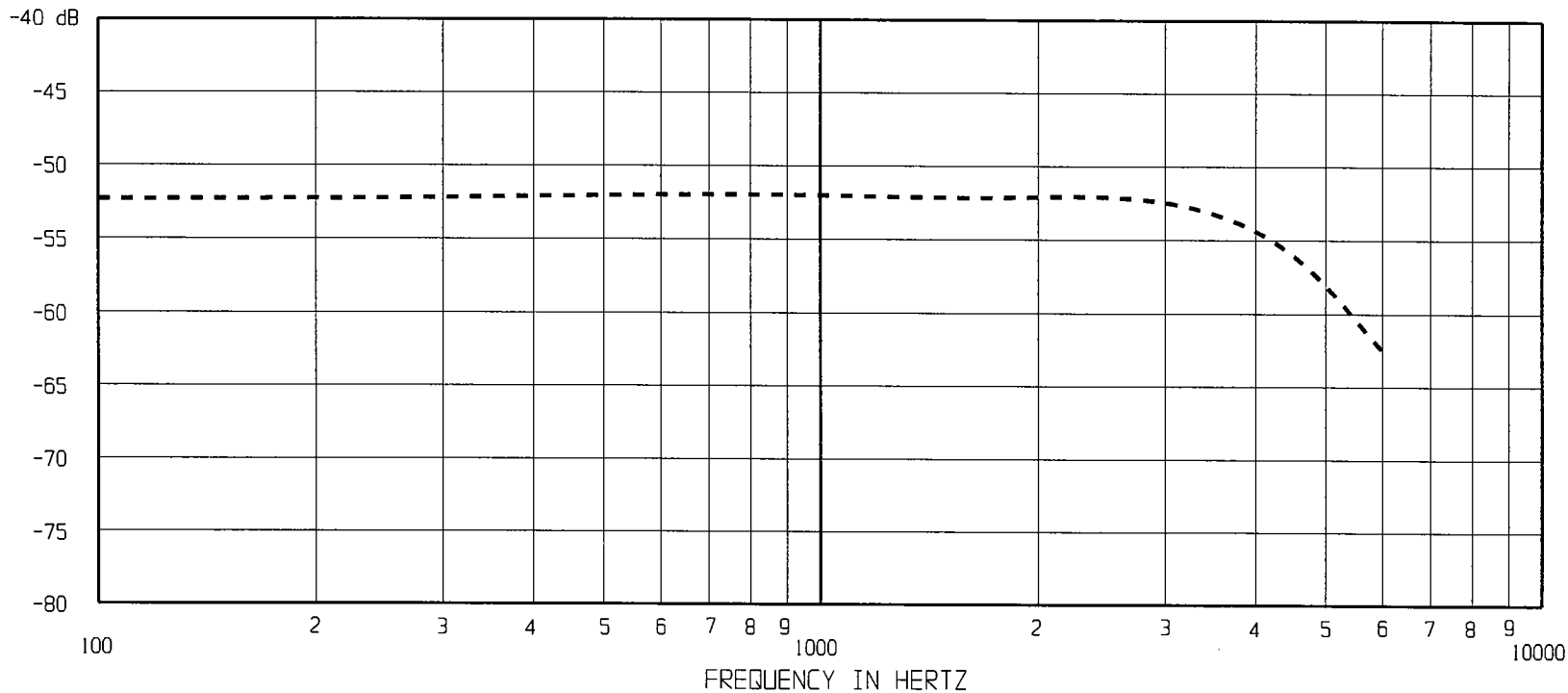
TITLE:
MICROPHONE & CABLE
OUTLINE DRAWING

WP-3502-P16
SHT 1.1

APP. BY	DATE
GP	3-2-04

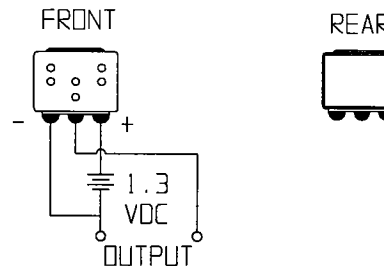
RED CONTROLLED

SENSITIVITY IN dB RELATIVE TO 1.0 VOLT/0.1 Pa (N/M²)
FOR CONDITIONS NOTED BELOW.



FREQUENCY	SENSITIVITY		
	MIN.	NOM.	MAX.
100	---	-52.0	---
1000	-55.0	-52.0	-49.0
4000	---	-53.0	---

DEVICE CONFORMITY	
RANGE OF DEVIATION FROM 1 KHz	
-2.0	+2.0
0.0	0.0
-4.0	+2.0



NOTES:

- CASE CONNECTED TO NEGATIVE TERMINAL.
- MICROPHONE TO BE FUNCTIONAL WITH 10 VDC SUPPLY.
- SENSITIVITY VALUES INDICATED ON THIS SPECIFICATION ARE VALID AT 50% HUMIDITY.
- MICROPHONE WILL SURVIVE SUBMERSION IN 3M OF WATER.

DC SUPPLY	AMPLIFIER CURRENT DRAIN	OUTPUT IMPEDANCE OHMS		
		MIN.	NOM.	MAX.
1.3V	50uA MAX.	2800	4400	6800

ISSUE

A

KNOWLES ELECTRONICS

KNOWLES ELECTRONICS, INC. ITASCA, ILLINOIS U.S.A.

KNOWLES ELECTRONICS, CO., BURGESS HILL, SUSSEX, ENGLAND

When test limits are used to establish incoming inspection acceptance/rejection criteria, correlation of test equipment with Knowles is also required for elimination of equipment and test method variations.

DR. BY DATE
AB 3-2-04

CK. BY DATE

APP. BY DATE

TITLE:
MICROPHONE & CABLE
PERFORMANCE SPECIFICATION

WP-3502-P16
SHT 2.1

RED CONTROLLED