

Wire Mounted Current Indicator

The CR-45 series, Wire-Mounted Electrical Current Indicators provides an effective method of monitoring electrical current. The indicator is attached directly to a current-carrying wire. When the current exceeds the turn-on point, the LED will illuminate to indicate the presence of current.

Applications

- Monitor Status of Heater Elements
- Observe Remote Loads
- Indicate Phase Loss
- Monitor Motor Operation

Features

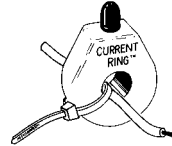
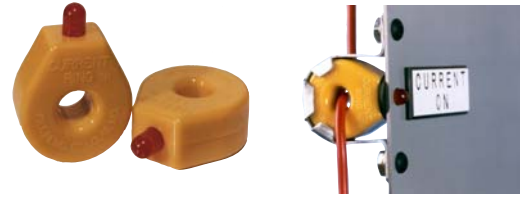
- Self Powered
- Red, Green, Amber, and Blue Indicators
- Easy to Install
- Supplied with plastic wire tie
- Bright Yellow Case for Easy Identification
- Panel Mounting Bracket available

Specifications

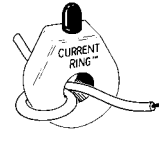
- 100 AAC Max, 600 VAC Max rating
- Thermoplastic Case Material
- 14.2 g / 0.5 oz weight
- 50 - 1Khz Bandwidth
- -10C - 85C Operating Temperature
- Mounting Bracket Non-Magnetic Aluminum Material

CR-45 Series

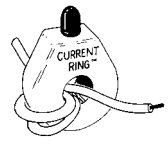
MB45 Bracket



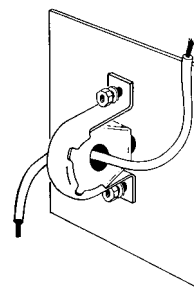
One-Wire Pass



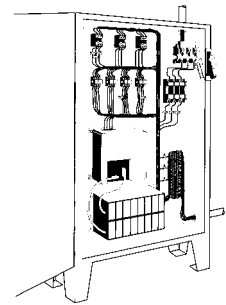
Two-Wire Passes



Three-Wire Passes



Panel Mount

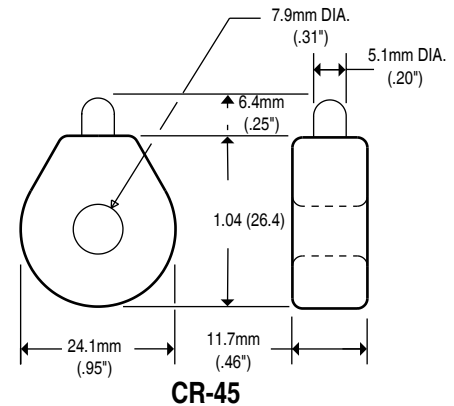
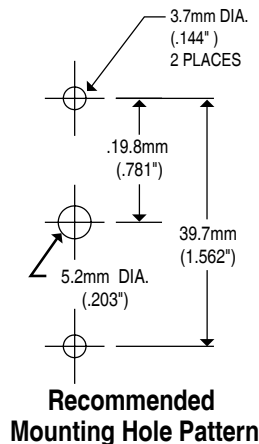
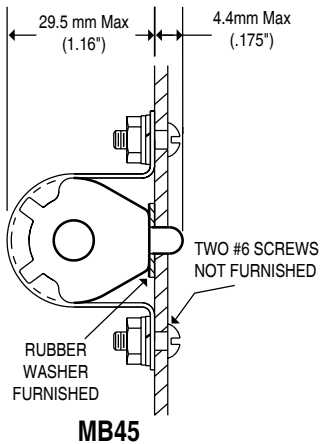


Load Center

ORDER INFORMATION

Part Number	LED Color	Turn On Point (1 pass)
CR45-R	Red	2 AAC
CR45-G	Green	2.5 AAC
CR45-A	Amber	2 AAC
CR45-B	Blue	2 AAC
MB45	Panel Mounting Bracket	

Indicators



Another HUNTINGTON ELECTRIC Company

CR Magnetics, Inc. 3500 Scarlet Oak Blvd St. Louis MO 63122 USA V: 636 343 8518 F: 636 343 5119

Web: <http://www.crmagnetics.com>

E-mail: sales@crmagnetics.com