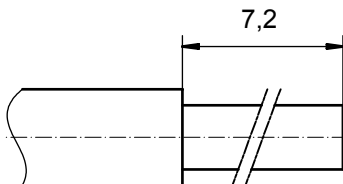


STRIPPING DIMENSIONS



Directive 2002/95/EC
„RoHS“
Compliant

NOTES:

CRIMPING:
USE CRIMP TOOL: 360X10409X
WITH TOOL INSERT: 36-000060
SELECTOR SETTINGS: 5 FOR AWG 8
4 FOR AWG 10

3	1	REAR SIDE	COPPER ALLOY	min. 8µin HARD GOLD over min. 50µin NICKEL
2	1	RETAINING RING	COPPER ALLOY	NICKEL PLATED
1	1	MATING SIDE	COPPER ALLOY	min. 30µin HARD GOLD over min. 50µin NICKEL
item	quantity	part description	material	plating

partlist

APPROVAL # FREIGABE # DEBLOCAGE # AUTORIZACION # APPROVAL	
CUSTOMER APPROVAL DATE:	
NAME:	TITLE:
COMPANY NAME:	
APPROVAL # FREIGABE # DEBLOCAGE # AUTORIZACION # APPROVAL	

THIS DRAWING MAY NOT BE COPIED OR REPRODUCED IN ANY WAY, AND MAY NOT BE PASSED ON TO A THIRD PARTY WITHOUT WRITTEN PERMISSION. OWNERSHIP AND COPYRIGHT OF CONEC GmbH DO NOT ALTER CAD DRAWING BY HAND		tolerance ISO 2768-m	dim. in mm	scale: 8:1		
		date	name	material: see partlist		
		drawn	04.01.08	Schmidt	HIGH POWER CONTACT FEMALE CRIMP VERSION 40A D-SUB COMBINATION	
		appd.	04.01.08	Koch		
	norm					
	d-old			dwg no:	Inventor 10	
	a	Origin	CONEC [®]		DIN-A3	
rev.	description	date	name	13K1A2378	sh: 1	
				part no:	13-000321	