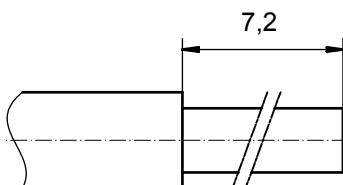


STRIPPING DIMENSIONS



Directive 2002/95/EC
„RoHS“
Compliant

NOTES:

CRIMPING:
USE CRIMP TOOL: 360X10409X
WITH TOOL INSERT: 36-000060
SELECTOR SETTINGS: 7 FOR AWG 10
6 FOR AWG 12

3	1	REAR SIDE	COPPER ALLOY	min. 8µin HARD GOLD over min. 50µin NICKEL
2	1	RETAINING RING	COPPER ALLOY	NICKEL PLATED
1	1	MATING SIDE	COPPER ALLOY	min. 30µin HARD GOLD over min. 50µin NICKEL
item	quantity	part description	material	plating

APPROVAL # FREIGABE # DEBLOCAGE # AUTORIZACION # APPROVAL	
CUSTOMER APPROVAL DATE:	
NAME:	TITLE:
COMPANY NAME:	
APPROVAL # FREIGABE # DEBLOCAGE # AUTORIZACION # APPROVAL	

THIS DRAWING MAY NOT BE COPIED OR REPRODUCED IN ANY WAY, AND MAY NOT BE PASSED ON TO A THIRD PARTY WITHOUT WRITTEN PERMISSION. OWNERSHIP AND COPYRIGHT OF CONEC GmbH DO NOT ALTER CAD DRAWING BY HAND				tolerance ISO 2768-m	dim. in mm	scale: 8:1 material: see partlist		
date	name	HIGH POWER CONTACT FEMALE CRIMP VERSION 30A D-SUB COMBINATION		drawn	03.01.08	Schmidt	dwg no: Inventor 10 13K1A2379 part no: 13-000311	DIN-A3 sh: 1
appd.	03.01.08			name	Koch			
norm				d-old				
a	Origin							
rev.	description	date	name					