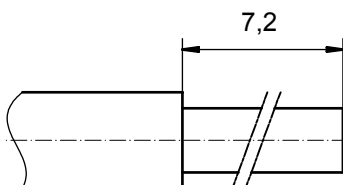


**STRIPPING DIMENSIONS**



Directive 2002/95/EC  
„RoHS“  
Compliant

**NOTES:**

CRIMPING:  
USE CRIMP TOOL: 360X10409X  
WITH TOOL INSERT: 36-000060  
SELECTOR SETTINGS: 3 FOR AWG 16  
2 FOR AWG 18  
2 FOR AWG 20

3	1	REAR SIDE	COPPER ALLOY	min. 8µin HARD GOLD over min. 50µin NICKEL
2	1	RETAINING RING	COPPER ALLOY	NICKEL PLATED
1	1	MATING SIDE	COPPER ALLOY	min. 30µin HARD GOLD over min. 50µin NICKEL
item	quantity	part description	material	plating

APPROVAL # FREIGABE # DEBLOCAGE # AUTORIZACION # APPROVAL	
CUSTOMER APPROVAL DATE:	
NAME:	TITLE:
COMPANY NAME:	
APPROVAL # FREIGABE # DEBLOCAGE # AUTORIZACION # APPROVAL	

THIS DRAWING MAY NOT BE COPIED OR REPRODUCED IN ANY WAY, AND MAY NOT BE PASSED ON TO A THIRD PARTY WITHOUT WRITTEN PERMISSION. OWNERSHIP AND COPYRIGHT OF CONEC GmbH DO NOT ALTER CAD DRAWING BY HAND		tolerance	ISO 2768-m		dim. in mm	scale:	8:1
		date	name	material:		see partlist	
drawn	03.01.08	Schmidt	<b>HIGH POWER CONTACT FEMALE</b> CRIMP VERSION 10A D-SUB COMBINATION		title:		
appd.	03.01.08	Koch					
norm							
d-old			dwg no:	Inventor 10	DIN-	<b>13K1A2381</b> sh: 1	
a	Origin		part no:	13-000291	A3		
rev.	description	date	name				