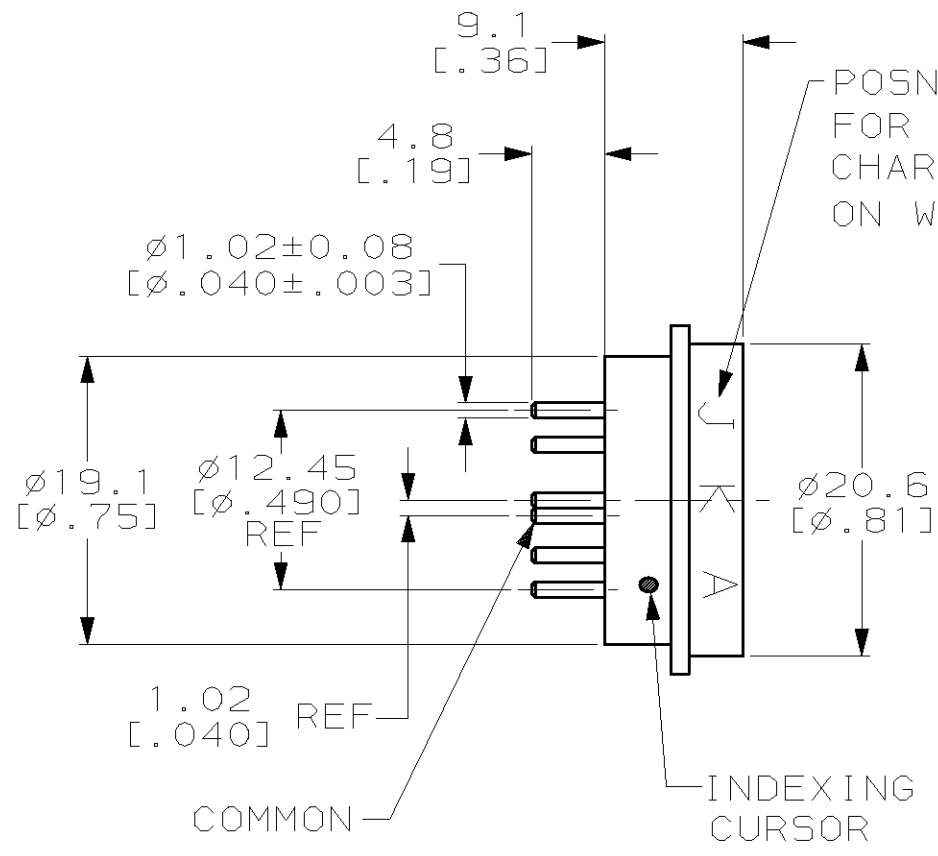
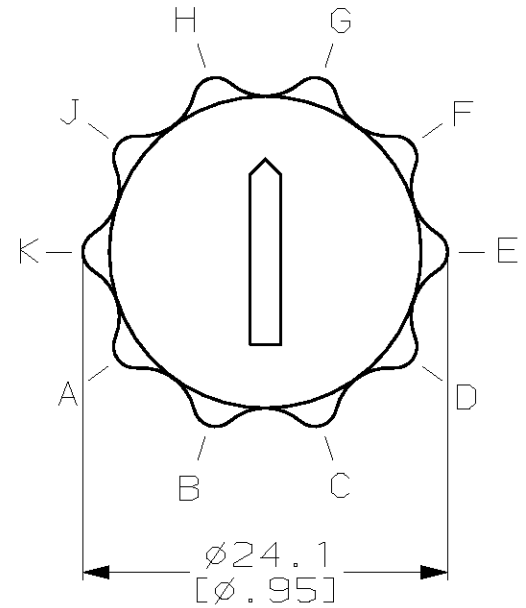


THIS DRAWING IS UNPUBLISHED. RELEASED FOR PUBLICATION, 19 .
 © COPYRIGHT 19 BY AMP INCORPORATED. ALL RIGHTS RESERVED.

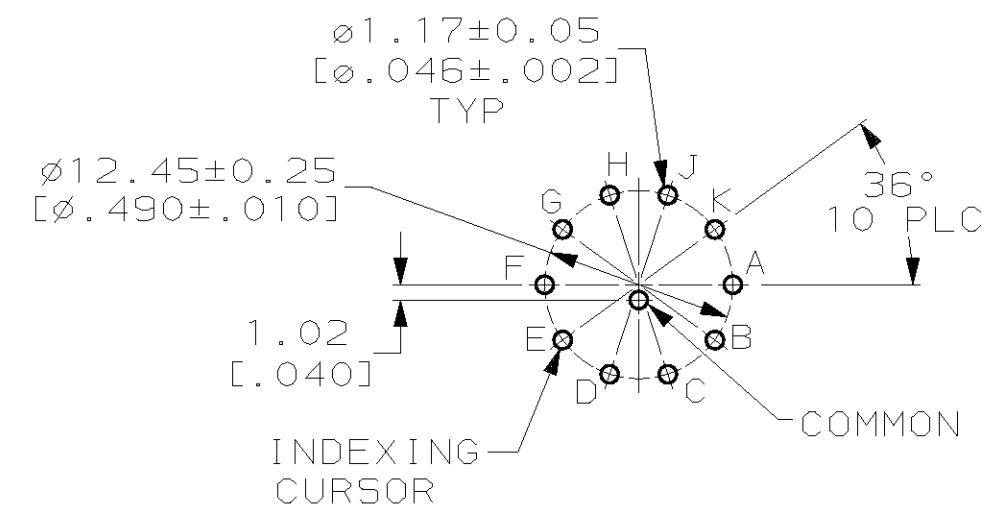
LOC	DIST	REVISIONS					
FT	69	P	LTR	DESCRIPTION	DATE	DWN	APVD
		T		REV PER EC 0650-0173-98	9-14-98	LM	GR



POSN LETTERS A THRU K SHOWN FOR REF ONLY. SEE TABLE FOR CHARACTERS THAT ARE STAMPED ON WHEEL. $\triangle 3$



- $\triangle 1$ MATERIAL; CASE-THERMOPLASTIC, COLOR NATURAL. WHEEL-THERMOPLASTIC, COLOR BLACK. CONTACT-BRASS.
- $\triangle 2$ FINISH: SOLDER TAILS TIN PLATE 0.0038 [.000150] MIN THK OVER 0.0013 [.000050] MIN THK NICKEL. CONTACT AREA 0.00076 [.000030] MIN. HARD GOLD OVER 0.00127-0.00254 [.000050-.000100] LOW STRESS NICKEL.
- $\triangle 3$ CHARACTERS 2.3 [.09] HIGH, COLOR WHITE.



P.C. BOARD HOLE LAYOUT SWITCH SIDE

POSITION										
1	2	3	4	5	6	7	8	9	10	FOR 435097-2
0	1	2	3	4	5	6	7	8	9	FOR 435097-1

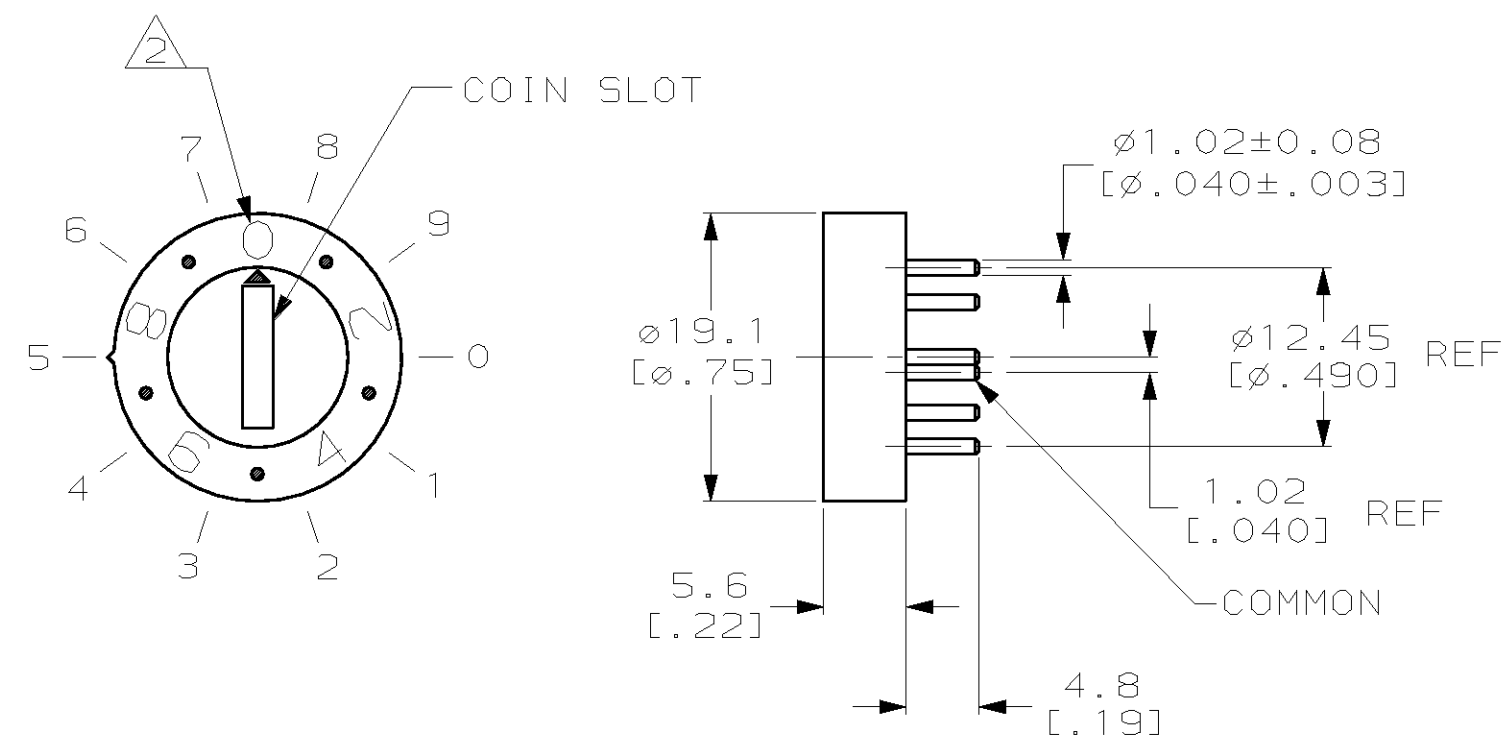
COMMON TO	0	●								
	1		●							
	2			●						
	3				●					
	4					●				
	5						●			
	6							●		
	7								●	
	8									●
	9									

10	9	8	7	6	5	4	3	2	1	435097-2
9	8	7	6	5	4	3	2	1	0	435097-1
K	J	H	G	F	E	D	C	B	A	PART NO
WHEEL POSN CHARACTERS										

THIS DRAWING IS A CONTROLLED DOCUMENT.		DWN J. McCLINTON 11-20-80	AMP AMP Incorporated Harrisburg, PA 17105-3608	
DIMENSIONS: mm [INCHES]		CHK R. JARRETT 12-1-80		
TOLERANCES UNLESS OTHERWISE SPECIFIED:		APVD D.W. RUPNIK 7-16-81	NAME ROTARY SWITCH ASSY 10 POSN, 6000 SERIES DECIMAL	
0 PLC ±-		PRODUCT SPEC 108-7514	SIZE CAGE CODE DRAWING NO RESTRICTED TO	
1 PLC ±-		APPLICATION SPEC 114-7005	A3 00779 C- 435097	
2 PLC ±0.5 [.02]		WEIGHT -	SCALE 2:1 SHEET 1 OF 3 REV T	
3 PLC ±-		CUSTOMER DRAWING		
4 PLC ±-				
ANGLES ±0°30'				
MATERIAL $\triangle 1$	FINISH $\triangle 2$			

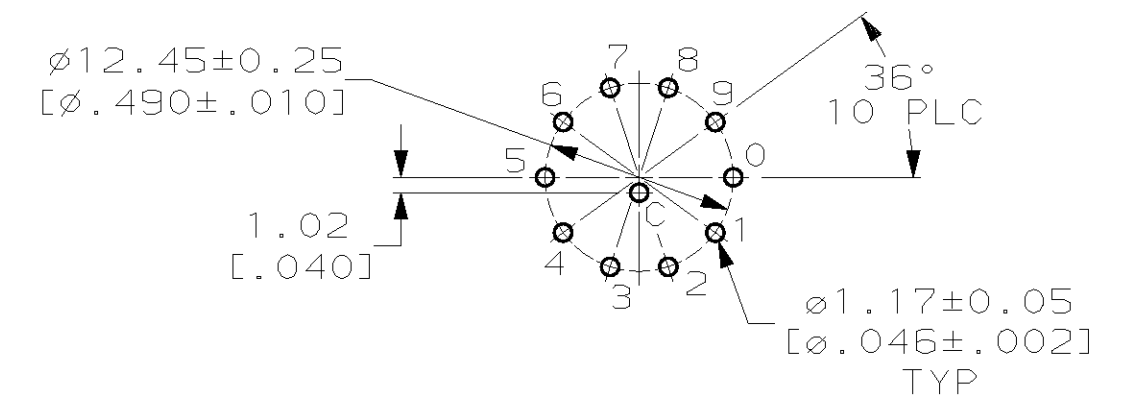
THIS DRAWING IS UNPUBLISHED. RELEASED FOR PUBLICATION ,19 .
 © COPYRIGHT 19 BY AMP INCORPORATED. ALL RIGHTS RESERVED.

LOC	DIST	REVISIONS			
P	LTR	DESCRIPTION	DATE	DWN	APVD
FT	69	T	SEE SHEET 1	-	-



① FINISH: SOLDER TAILS TIN PLATE 0.0038 [0.000150] MIN THK OVER 0.0013 [0.000050] MIN THK NICKEL. CONTACT AREA 0.00076 [0.000030] MIN. HARD GOLD OVER 0.00127-0.00254 [0.000050-.000100] LOW STRESS NICKEL.

② CHARACTERS 2.5 [0.10] HIGH, COLOR BLACK.



		POSITION									
		0	1	2	3	4	5	6	7	8	9
COMMON TO	0	●									
	1		●								
	2			●							
	3				●						
	4					●					
	5						●				
	6							●			
	7								●		
	8									●	
	9										●

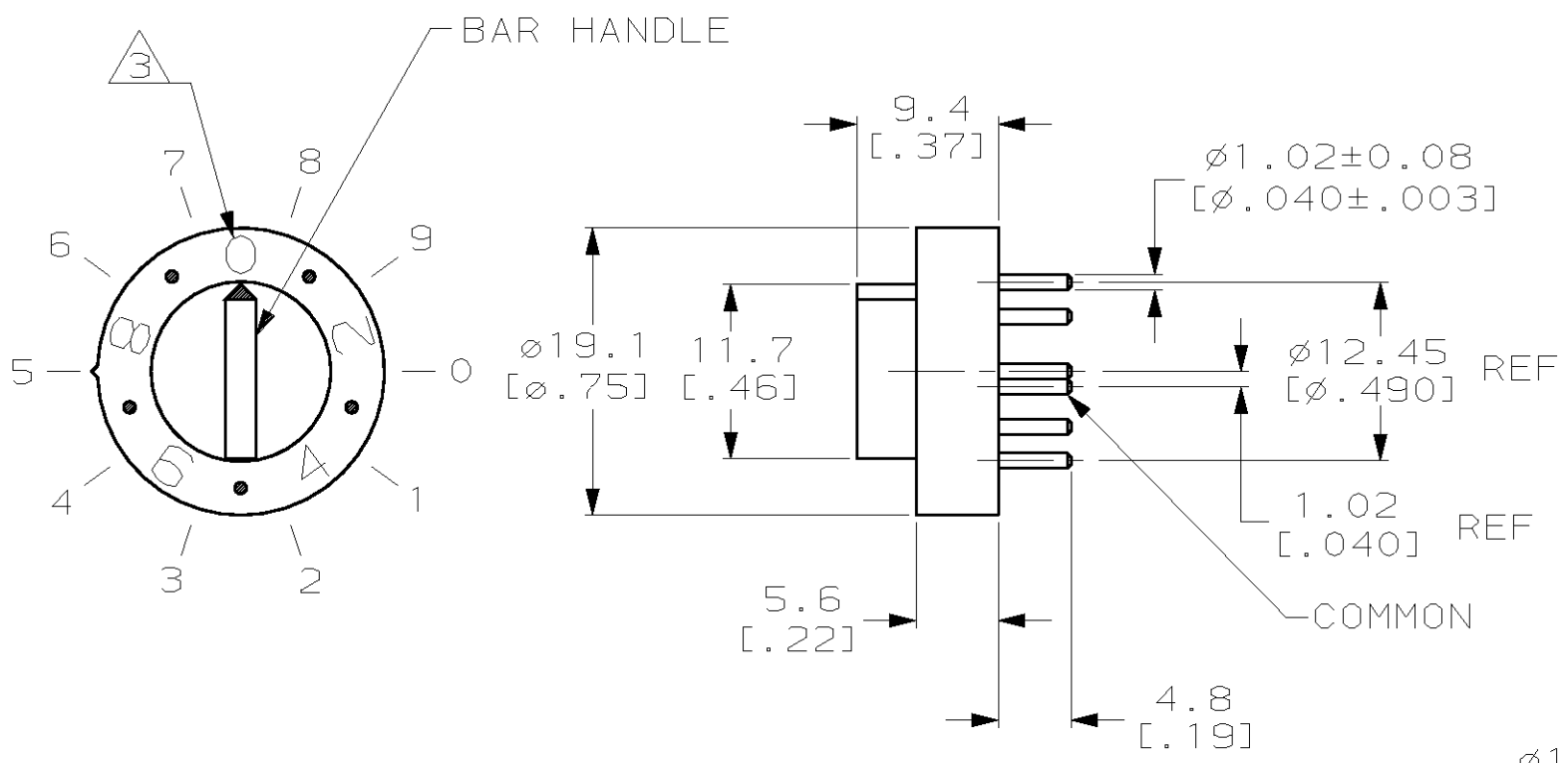
P.C. BOARD HOLE LAYOUT SWITCH SIDE

1-435097-1
PART NO

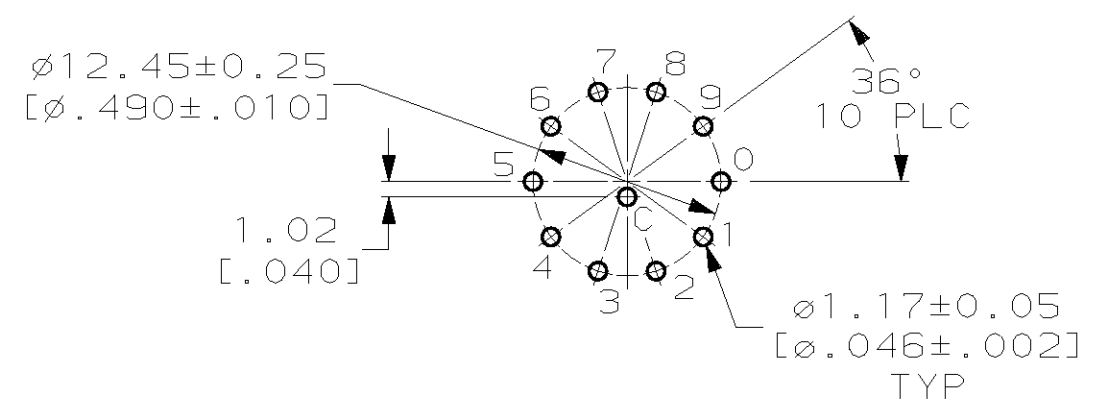
THIS DRAWING IS A CONTROLLED DOCUMENT.		DWN R. TALLEY 8-7-91	AMP Incorporated Harrisburg, PA 17105-3608	
DIMENSIONS: mm [INCHES]		CHK R. MILLER 8-7-91		
TOLERANCES UNLESS OTHERWISE SPECIFIED:		APVD D. HUFFMAN 8-9-91	NAME ROTARY SWITCH ASSY, 10 POSN, 6000 SERIES DECIMAL	
0 PLC ±- 1 PLC ±- 2 PLC ±0.5 [0.02] 3 PLC ±- 4 PLC ±- ANGLES ±0°30'		PRODUCT SPEC 108-7514	DRAWING NO 435097	
MATERIAL CASE: THERMOPLASTIC, COLOR NATURAL CONTACT: BRASS		APPLICATION SPEC 114-7005	SIZE A3	RESTRICTED TO -
FINISH ①		WEIGHT -	CAGE CODE 00779	SCALE 2:1
		CUSTOMER DRAWING		SHEET 2 OF 3
				REV T

THIS DRAWING IS UNPUBLISHED. RELEASED FOR PUBLICATION, 19 .
 © COPYRIGHT 19 BY AMP INCORPORATED. ALL RIGHTS RESERVED.

LOC	DIST	REVISIONS					
FT	69	P	LTR	DESCRIPTION	DATE	DWN	APVD
		T		SEE SHEET 1	-	-	-



- ① FINISH: SOLDER TAILS TIN PLATE 0.0038 [0.000150] MIN THK OVER 0.0013 [0.000050] MIN THK NICKEL. CONTACT AREA 0.00076 [0.000030] MIN. HARD GOLD OVER 0.00127-0.00254 [0.000050-.000100] LOW STRESS NICKEL.
- ② FINISH: SOLDER TAILS TIN PLATE 0.0038 [0.000150] MIN THK OVER 0.0051 [0.000200] MIN THK COPPER. CONTACT AREA 0.00076 [0.000030] MIN. HARD GOLD OVER 0.00127-0.00254 [0.000050-.000100] LOW STRESS NICKEL.
- ③ CHARACTERS 2.5 [0.10] HIGH, COLOR BLACK.



	POSITION									
	0	1	2	3	4	5	6	7	8	9
COMMON TO	0	●								
	1		●							
	2			●						
	3				●					
	4					●				
	5						●			
	6							●		
	7								●	
	8									●
	9									

P.C. BOARD HOLE LAYOUT
SWITCH SIDE

②	2-435097-3
①	2-435097-1
FINISH	PART NO

THIS DRAWING IS A CONTROLLED DOCUMENT.		DWN R. TALLEY 8-7-91	AMP AMP Incorporated Harrisburg, PA 17105-3608
		CHK R. MILLER 8-7-91	
DIMENSIONS: mm [INCHES]		APVD D. HUFFMAN 8-9-91	NAME ROTARY SWITCH ASSY, 10 POSN, 6000 SERIES DECIMAL
TOLERANCES UNLESS OTHERWISE SPECIFIED: 0 PLC ±- 1 PLC ±- 2 PLC ±0.5 [0.02] 3 PLC ±- 4 PLC ±- ANGLES ±0°30'		PRODUCT SPEC 108-7514	
MATERIAL CASE: THERMOPLASTIC, COLOR NATURAL CONTACT: BRASS		APPLICATION SPEC 114-7005	SIZE A3
FINISH SEE TABLE		WEIGHT -	CAGE CODE 00779
CUSTOMER DRAWING		DRAWING NO C-435097	
		SCALE 2:1	SHEET 3 OF 3
		RESTRICTED TO - REV T	