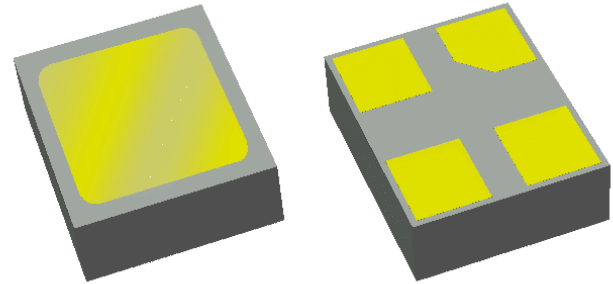


Data Sheet

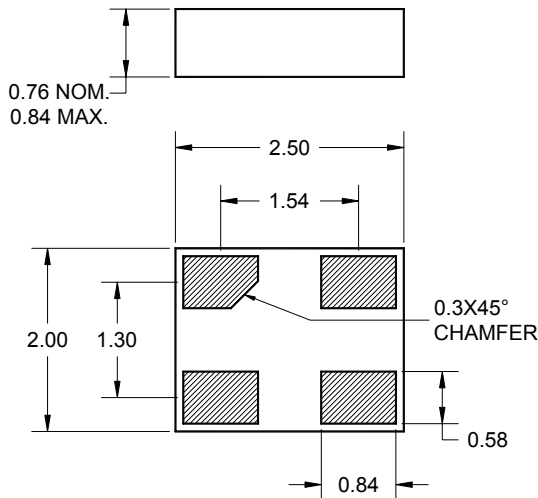
Features

- For AMPS, TDMA, CDMA applications
- Usable bandwidth 25 MHz
- High attenuation
- No impedance matching required for operation at 50 Ω
- Single-ended operation
- Ceramic Surface Mount Package (SMP)
- Small size



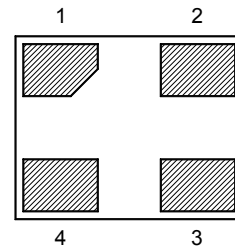
Package

Surface Mount 2.50 x 2.00 x 0.76 mm



Pin Configuration

Bottom View



Pin No.	Description
1	Input
3	Output
2,4	Case ground

Dimensions shown are nominal in millimeters
All tolerances are ±0.10mm

Body: Al_2O_3 ceramic
Lid: Kovar or Alloy 42, Au over Ni plated
Terminations: Au plating 0.5 - 1.0μm,
over a 2 - 6μm Ni plating

Data Sheet

Electrical Specifications ⁽¹⁾

Operating Temperature Range: ⁽²⁾ -30 to +85 °C

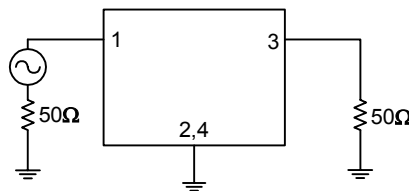
Parameter ⁽³⁾	Minimum	Typical	Maximum	Unit
Center Frequency	-	881.5	-	MHz
Maximum Insertion Loss 869 - 894 MHz	-	1.6	2.8	dB
Absolute Attenuation				
DC - 824 MHz	40	49	-	dB
824 - 849 MHz	40	47	-	dB
954 - 978 MHz	40	48	-	dB
978 - 1080 MHz	45	55	-	dB
1088 - 2600 MHz	40	50	-	dB
Amplitude Ripple 869 - 894 MHz	-	0.5	1.2	dB p-p
Input/Output Return Loss 869 - 894 MHz	9.5	11.5	-	dB
Source Impedance ⁽⁴⁾	-	50	-	Ω
Load Impedance ⁽⁴⁾	-	50	-	Ω

Notes:

1. All specifications are based on the test circuit shown below
2. In production, devices will be tested at room temperature to a guardbanded specification to ensure electrical compliance over temperature
3. Electrical margin has been built into the design to account for the variations due to temperature drift and manufacturing tolerances
4. This is the optimum impedance in order to achieve the performance shown

Test Circuit:

50 Ω
Single-ended

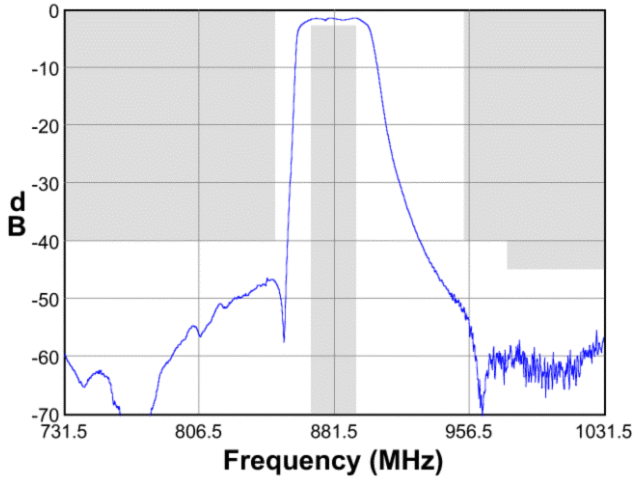


No impedance matching
required

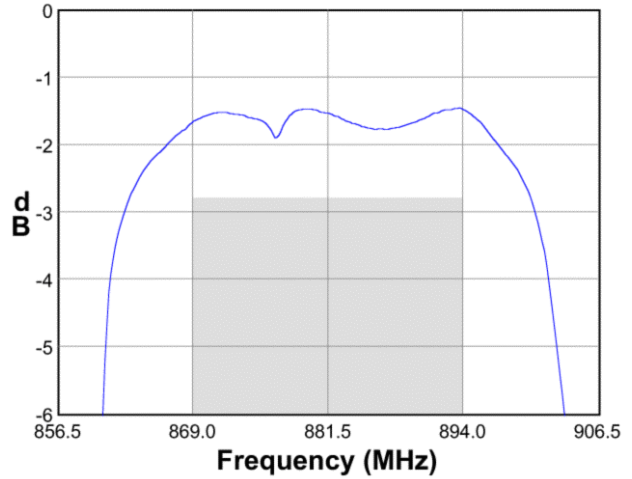
Data Sheet

Typical Performance (at +25°C)

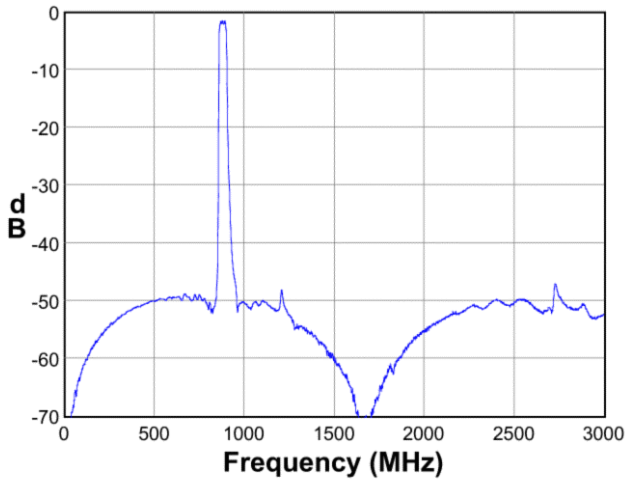
Frequency Response



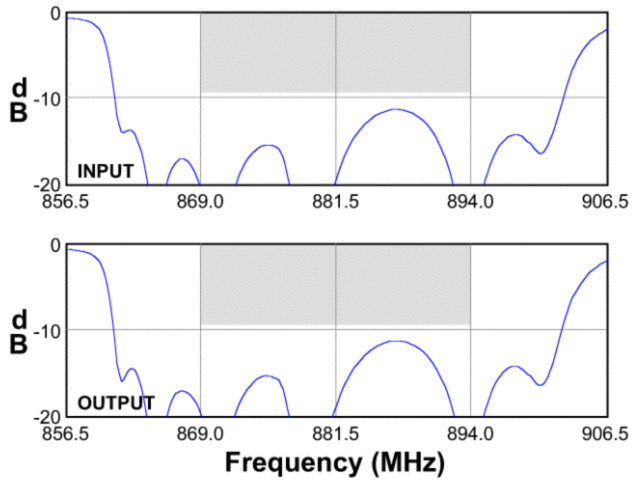
Passband Response



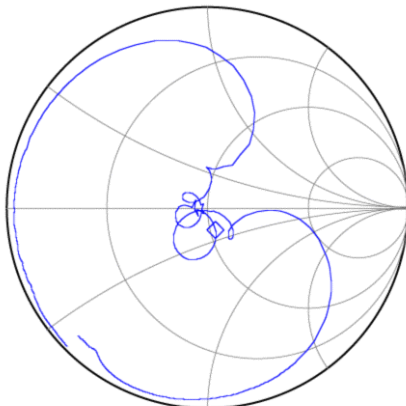
Wideband Response



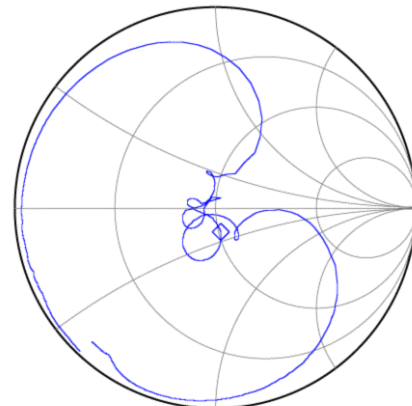
Input/Output Return Loss



Input Smith Chart



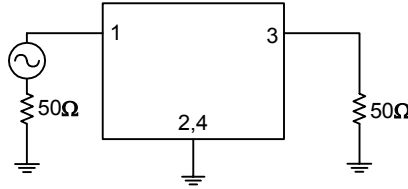
Output Smith Chart



Data Sheet

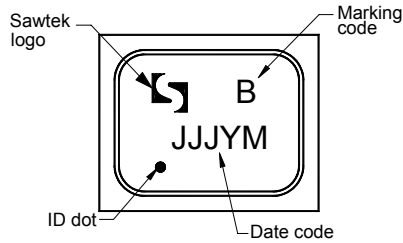
Matching Schematics

50 Ω
Single-ended



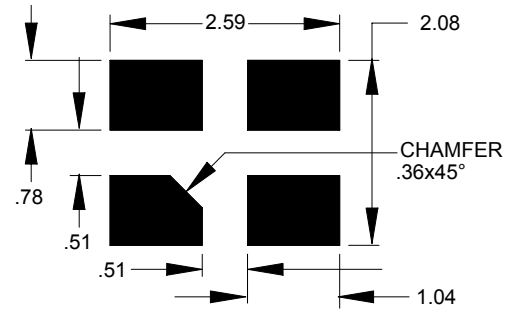
No impedance matching required

Marking



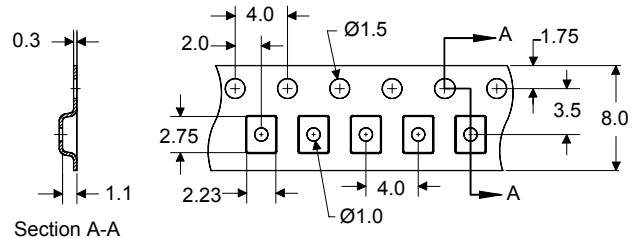
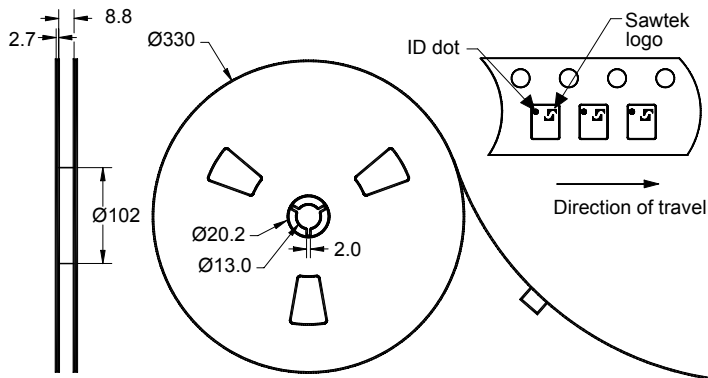
The date code consists of: JJJ = Julian day,
Y = last digit of year, M = manufacturing site code

PCB Footprint



This footprint represents a recommendation only
Dimensions shown are nominal in millimeters

Tape and Reel




Dimensions shown are nominal in millimeters
Packaging quantity: 10000 units/reel

Data Sheet

Maximum Ratings

Parameter	Symbol	Minimum	Maximum	Unit
Operating Temperature Range	T	-30	+85	°C
Storage Temperature Range	T _{stg}	-40	+85	°C

Warnings

- Electrostatic Sensitive Device (ESD) 
- Avoid ultrasonic exposure

Links to Additional Technical Information

[PCB Layout Tips](#)

[Qualification Flowchart](#)

[Soldering Profile](#)

[S-Parameters](#)

[Other Technical Information](#)

Sawtek's liability is limited only to the Surface Acoustic Wave (SAW) component(s) described in this data sheet. Sawtek does not accept any liability for applications, processes, circuits or assemblies which are implemented using any Sawtek component described in this data sheet.

Contact Information



PO Box 609501
 Orlando, FL 32860-9501
 USA

Phone: +1 (407) 886-8860
 Fax: +1 (407) 886-7061
 Email: custservice@sawtek.com
 Web: www.sawtek.com

Or contact one of our worldwide network of [sales offices](#), [representatives or distributors](#)