

200 V - 1,000 V Rectifiers
1.5 A Forward Current
70 ns - 3000 ns Recovery Time

X02UL - X10UL
X02FL - X10FL
X02SL - X10SL

SURFACE MOUNT
HERMETICALLY SEALED

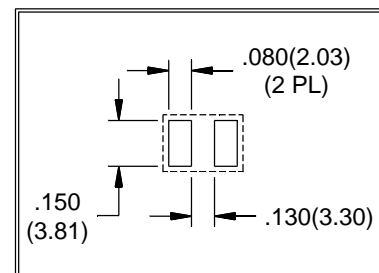
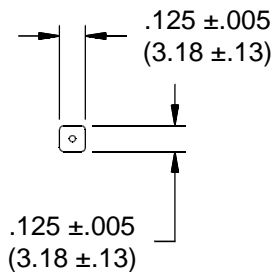
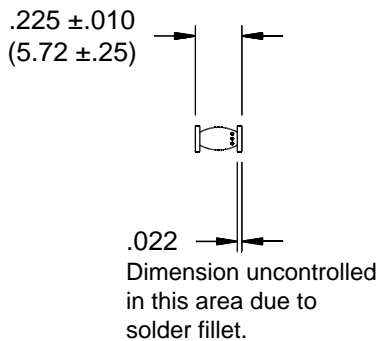


ELECTRICAL CHARACTERISTICS AND MAXIMUM RATINGS

Part Number	Working Reverse Voltage (V _{rwm})	Average Rectified Current (I _o)		Reverse Current @ V _{rwm} (I _r)		Forward Voltage (V _f)		1 Cycle Surge Current t _p =8.3ms (I _{fsm})	Repetitive Surge Current (I _{frm})	Reverse Recovery Time (3) (T _{rr})	Thermal Impd. θ _{J-C}	Junction Cap. @50VDC @1kHz (C _j)
		55°C(1)	100°C(2)	25°C	100°C	25°C	25°C	25°C	25°C	25°C	25°C	25°C
	Volts	Amps	Amps	µA	µA	Volts	Amps	Amps	Amps	ns	°C/ W	pF
X02UL X06UL X10UL	200 600 1000	1.50 1.50 1.50	0.750 0.750 0.750	1.0 1.0 1.0	20 20 20	2.3 2.3 2.3	3.00 3.00 3.00	25 25 25	5 5 5	70 70 70	5 5 5	16 16 16
X02FL X06FL X10FL	200 600 1000	1.50 1.50 1.50	0.750 0.750 0.750	1.0 1.0 1.0	20 20 20	2.0 2.0 2.0	3.00 3.00 3.00	30 30 30	10 10 10	150 150 150	5 5 5	16 16 16
X02SL X06SL X10SL	200 600 1000	1.50 1.50 1.50	0.750 0.750 0.750	1.0 1.0 1.0	20 20 20	1.3 1.3 1.3	3.00 3.00 3.00	30 30 30	10 10 10	3000 3000 3000	5 5 5	16 16 16

(1)TC=55°C (2)TC=100°C (3)I_f=0.5A, I_r=1.0A, I_{rr}=0.25A *Op. Temp.= -65°C to +175°C Stg. Temp.= -65°C to +200°C

Markings:
 Three Dots for polarity.



Dimensions: In. (mm) • All temperatures are ambient unless otherwise noted. • Data subject to change without notice.



VOLTAGE MULTIPLIERS INC.
 8711 W. Roosevelt Ave.
 Visalia, CA 93291

TEL 559-651-1402
 FAX 559-651-0740
 www.voltagemultipliers.com

6

X02UL - X10UL • X02FL - X10FL • X02SL - X10SL

