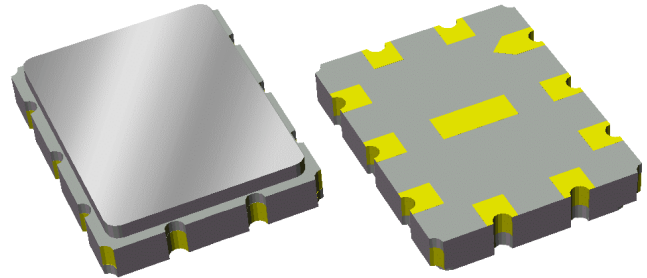


Preliminary Data Sheet

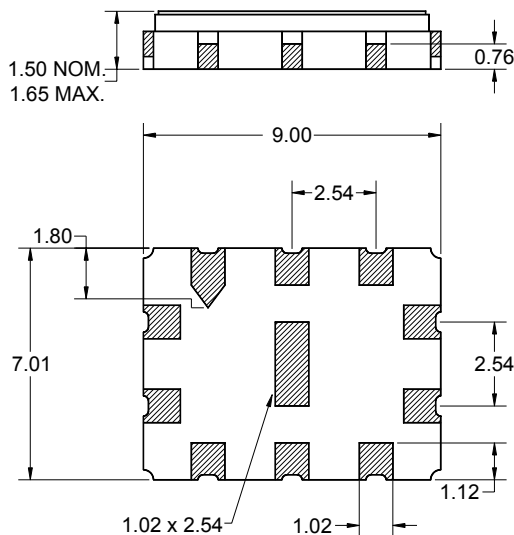
Features

- For broadband applications
- Typical 3dB bandwidth of 57.0 MHz
- High attenuation
- Single-ended operation
- Ceramic Surface Mount Package (SMP)
- Small size
- Replaces Sawtek P/N 851947 (BW 3dB=56 MHz)



Package

Surface Mount 9.00 x 7.01 x 1.50 mm

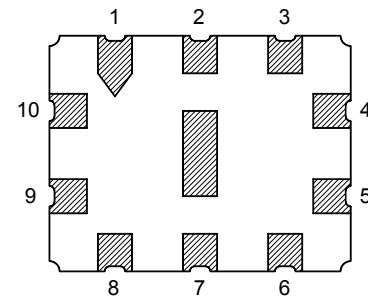


Dimensions shown are nominal in millimeters
All tolerances are ± 0.15 mm except overall
length and width $+0.10$ mm/ -0.15 mm

Body: Al_2O_3 ceramic
Lid: Kovar, Ni plated
Terminations: Au plating 0.5 - 1.0 μ m,
over a 2 - 6 μ m Ni plating

Pin Configuration

Bottom View



Pin No.	Description
4	Output
5	Output return
9	Input
10	Input return
1,2,3,6,7,8	Case ground

Preliminary Data Sheet

Electrical Specifications ⁽¹⁾

Operating Temperature Range: ⁽²⁾ 0 to +70 °C

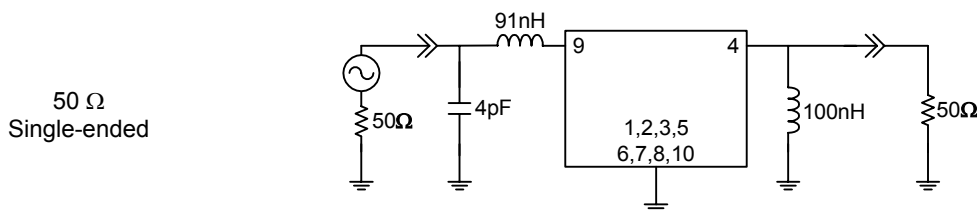
Parameter ⁽³⁾	Minimum	Typical	Maximum	Unit
Center Frequency	-	140	-	MHz
Minimum Insertion Loss	-	18.65	19.5	dB
Lower 1 dB Bandedge ⁽⁴⁾	-	112.7	115.75	MHz
Upper 1 dB Bandedge	164.25	166.1	-	MHz
Lower 3 dB Bandedge ⁽⁴⁾	-	111.4	112.80	MHz
Upper 3 dB Bandedge	167.20	168.4	-	MHz
Lower 40 dB Bandedge ⁽⁴⁾	102.20	106.3	-	MHz
Upper 40 dB Bandedge	-	176.4	177.80	MHz
Amplitude Variation 115.75 - 164.25 MHz	-	0.60	1.15	dB p-p
Phase Linearity 115.75 - 164.25 MHz	-	4.07	7.75	deg p-p
Group Delay Variation 115.75 - 164.25 MHz	-	31	60	ns p-p
Absolute Delay	-	0.531	-	μsec
Relative Attenuation ⁽⁴⁾				
10 - 27.5 MHz	49	58	-	dB
27.5 - 102 MHz	39	42	-	dB
178 - 252.5 MHz	37	42	-	dB
252.5 - 300 MHz	36	44	-	dB
Terminating Source Impedance: ⁽⁵⁾	-	50	-	Ω
Terminating Load Impedance: ⁽⁵⁾	-	50	-	Ω
Substrate Material	-	128 LiNbO ₃	-	-
Temperature Coefficient of Frequency	-	-74	-	ppm/°C

Notes:

1. All specifications are based on the test circuit shown below
2. In production, devices will be tested at room temperature to a guardbanded specification to ensure electrical compliance over temperature
3. Electrical margin has been built into the design to account for the variations due to temperature and manufacturing tolerances
4. All attenuation measurements are measured relative to minimum insertion loss
5. This is the optimum impedance in order to achieve the performance shown

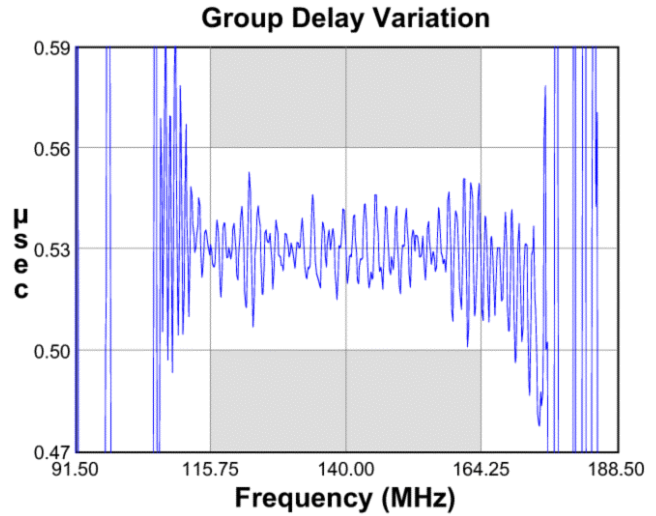
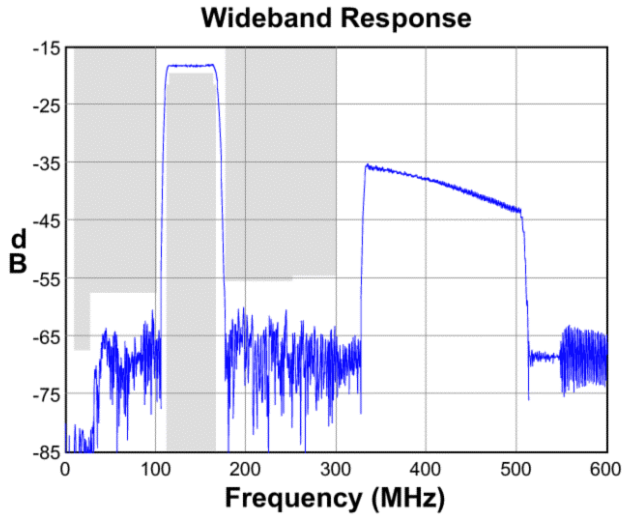
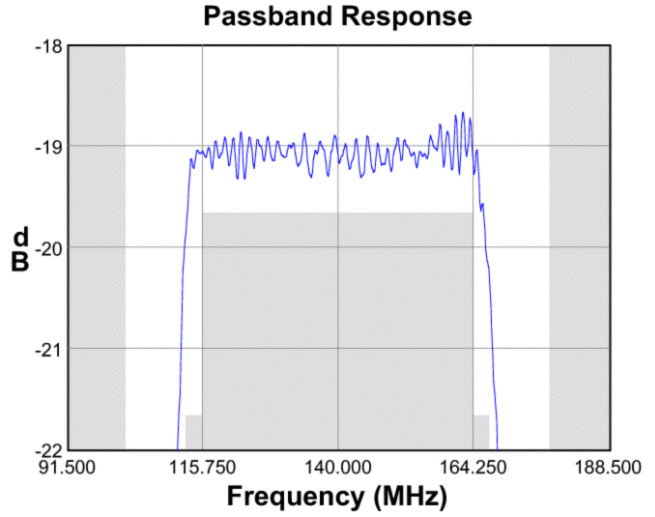
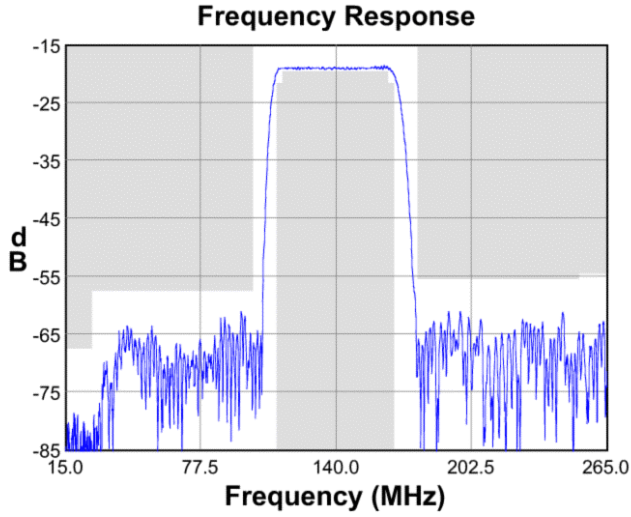
Test Circuit:

Actual matching values may vary due to PCB layout and parasitics

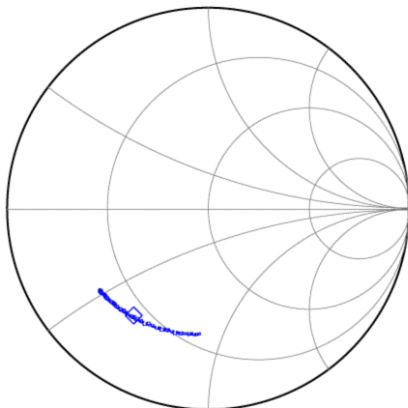


Preliminary Data Sheet

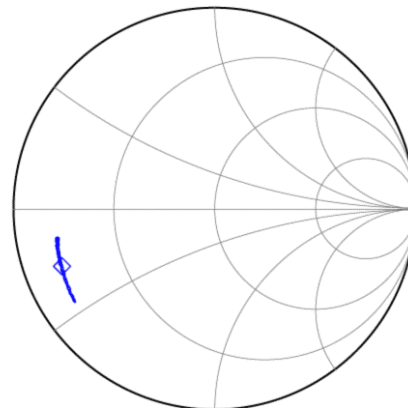
Typical Performance (at +25°C)



Input Smith Chart



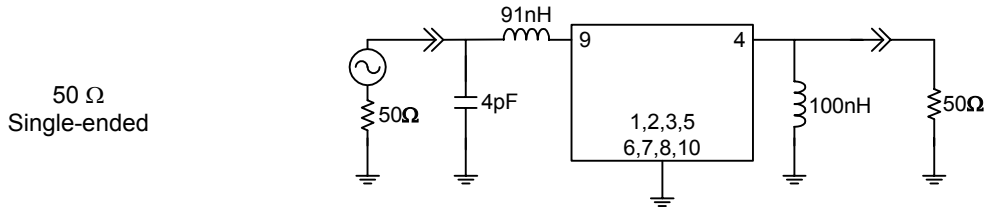
Output Smith Chart



Preliminary Data Sheet

Matching Schematics

Actual matching values may vary due to PCB layout and parasitics

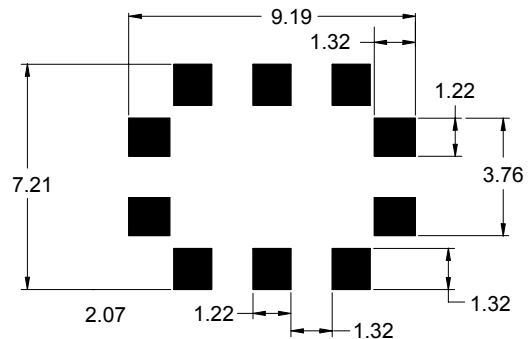


Marking



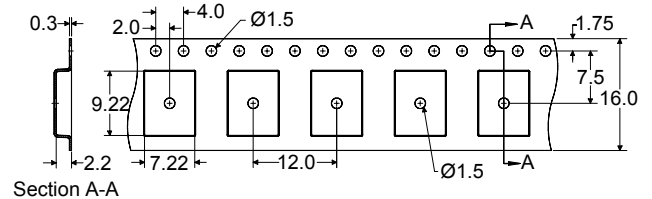
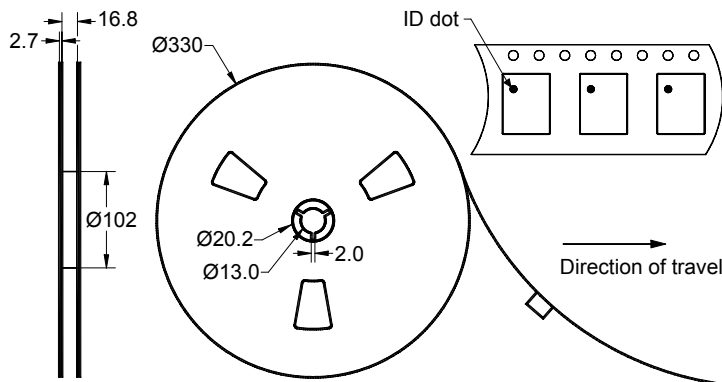
The date code consists of: day of the current year (Julian, 3 digits), last digit of the year (1 digit) and hour (2 digits)

PCB Footprint



This footprint represents a recommendation only
Dimensions shown are nominal in millimeters

Tape and Reel




Dimensions shown are nominal in millimeters
Packaging quantity: 2000 units/reel

Preliminary Data Sheet

Maximum Ratings

Parameter	Symbol	Minimum	Typical	Maximum	Unit
Operating Temperature Range	T	0	+25	+70	°C
Storage Temperature Range	T _{stg}	-40	-	+85	°C

Warnings

- Electrostatic Sensitive Device (ESD) 
- Avoid ultrasonic exposure

Links to Additional Technical Information

[PCB Layout Tips](#)

[Qualification Flowchart](#)

[Soldering Profile](#)

[S-Parameters](#)

[Reel and Packaging Label](#)

[Other Technical Information](#)

Sawtek's liability is limited only to the Surface Acoustic Wave (SAW) component(s) described in this data sheet. Sawtek does not accept any liability for applications, processes, circuits or assemblies which are implemented using any Sawtek component described in this data sheet.

Contact Information



PO Box 609501
 Orlando, FL 32860-9501
 USA

Phone: +1 (407) 886-8860
 Fax: +1 (407) 886-7061
 Email: custservice@sawtek.com
 Web: www.sawtek.com

Or contact one of our worldwide
 Network of [sales offices](#),
[Representatives or distributors](#)