

VOLTAGE CONTROLLED OSCILLATOR

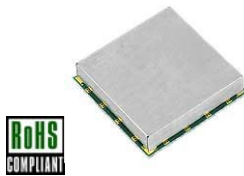
SURFACE MOUNT MODEL: DCMO1129

WIDE BANDWIDTH

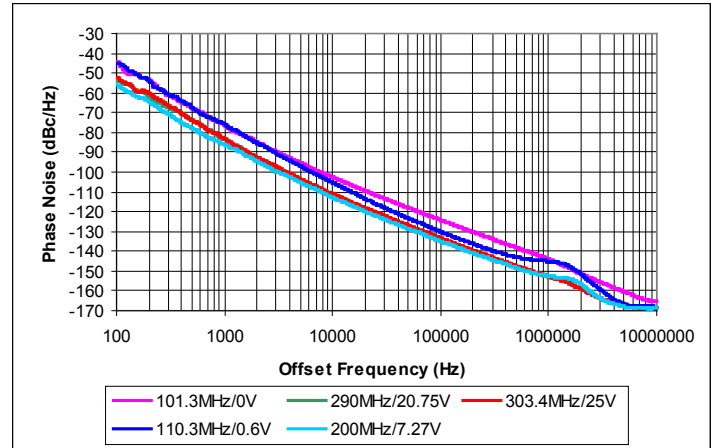
110 - 290 MHz

FEATURES:

- ▶ Exceptional Phase Noise Performance
- ▶ Self Regulated Power Supply Voltage
- ▶ Small Size, Surface Mount
- ▶ Lead Free REL-PRO® Technology



Phase Noise



SPECIFICATIONS (Rev. D 08/25/06)

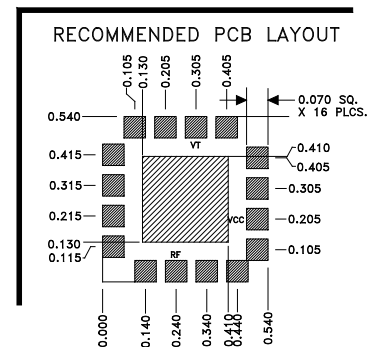
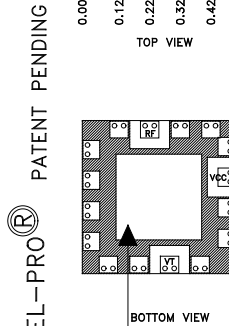
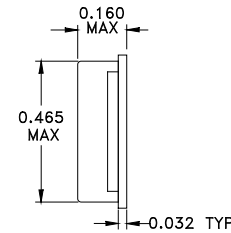
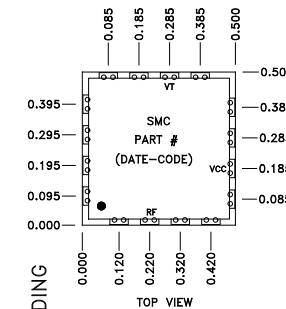
Frequency	110 - 290 MHz
Tuning Voltage (Full Band)	0.5-24 VDC
Bias Voltage*	+5 to +12 @ 25 mA (Max.)
Output Power	+3 dBm (Min.)
Tuning Sensitivity	4-16 MHz/V (Typ.)
Output Impedance	50 Ohms (Nom)
Harmonic Suppression	10 dBc (Typ.)
Frequency Pulling	3 MHz (Max @ 1.75:1 VSWR)
Frequency Pushing	1 MHz/V (Max.)
Phase Noise @ 10 kHz	-112 dBc/Hz (Typ.)
Operating Temperature Range	-40 to +85 °C

* Internally regulated

Guaranteed Tuning Specifications

Tuning Voltage (V)	Frequency (MHz)
0.5	110 (Max)
5	155 (Min)
8	190 (Min)
12	230 (Min)
15	250 (Min)
18	270 (Min)
24	290 (Min)

Package # 278LF



OPTIONAL SOLDER AREA FOR HIGH VIBRATION ENVIRONMENT

TOLERANCES ON THREE DECIMAL PLACES = ± 0.015

PACKAGE MOUNTING: SEE APPLICATION NOTE AN7200

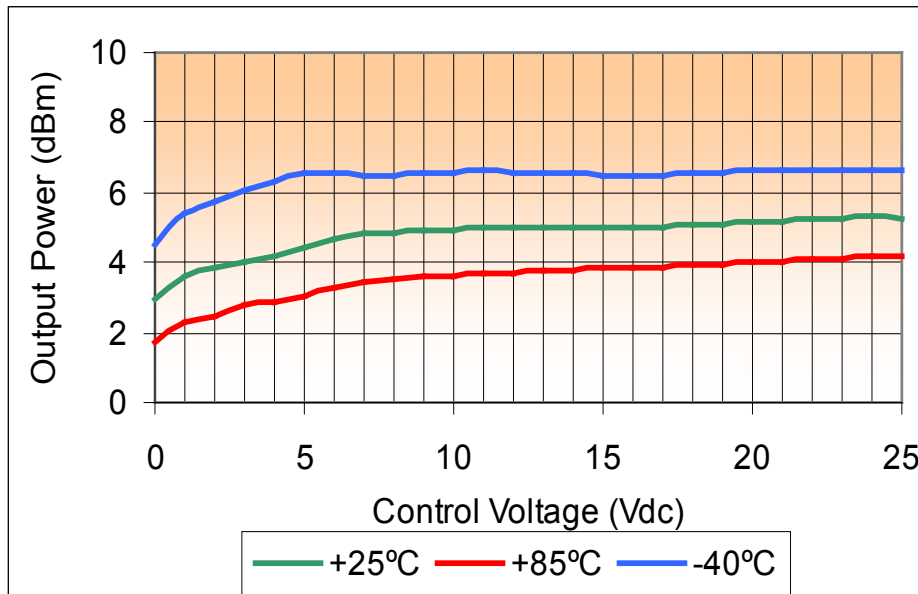
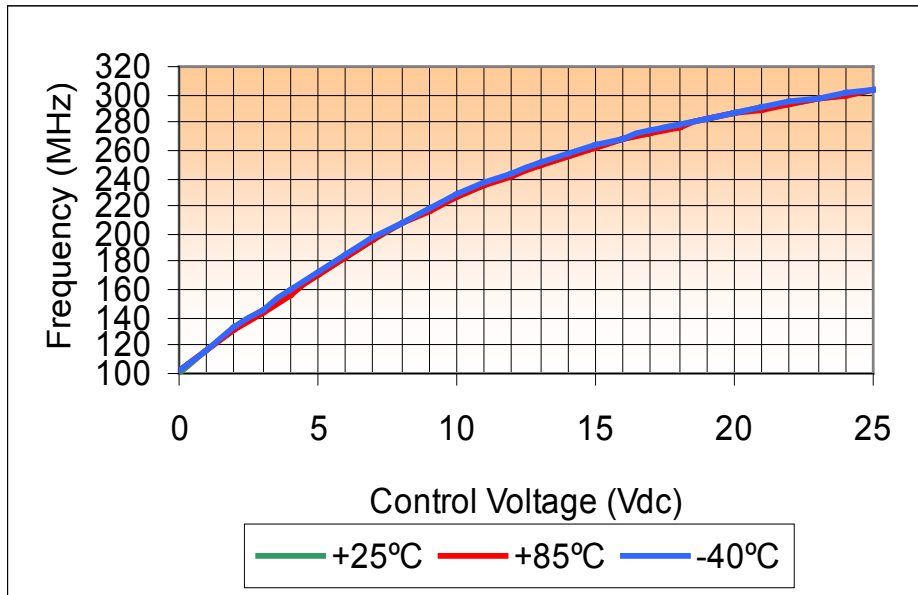
ALL UNLABELED PINS TO BE GROUNDED.

VOLTAGE CONTROLLED OSCILLATOR SURFACE MOUNT MODEL: DCMO1129

WIDE BANDWIDTH

110 - 290 MHz

PERFORMANCE PLOTS



VOLTAGE CONTROLLED OSCILLATOR SURFACE MOUNT MODEL: DCMO1129

WIDE BANDWIDTH

110 - 290 MHz

PERFORMANCE PLOTS

