

### Features

- True resistive analog output
- Compact, moisture resistant package
- Low LED current
- Digital to analog isolation

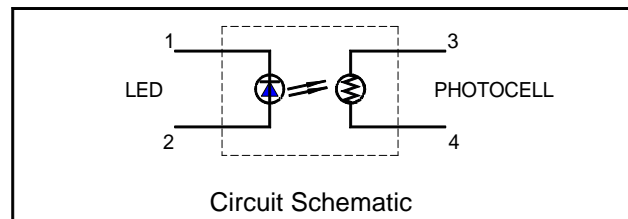
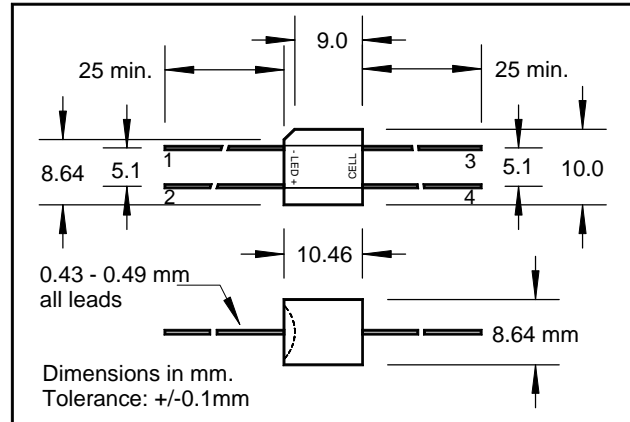
### Description

This optocoupler consists of an LED input optically coupled to a photocell. The photocell resistance is high when the LED current is "off" and low resistance when the LED current is "on".

### Absolute Maximum Ratings

Storage Temperature	-40 to +75°C
Operating Temperature	-40 to +75°C
Soldering Temperature (2)	260°C
Isolation Voltage (DC or peak AC)	2500V

Note: (1) Derate linearly to 0 at 75°C  
 (2) >2 mm from case for <5 sec.



### Electrical Characteristics (T<sub>A</sub>=25°C unless otherwise noted)

Symbol	Parameter	Min	Typ	Max	Units	Test Conditions
<b>LED</b>						
I <sub>F</sub>	Forward Current			40	mA	
V <sub>F</sub>	Forward Voltage			2.5	V	I <sub>F</sub> = 20 mA
V <sub>R</sub>	Reverse Voltage			3.0	V	
<b>Cell</b>						
V <sub>C</sub>	Maximum Cell Voltage			100	V	(DC or peak AC)
P <sub>D</sub>	Power Dissipation			175	mW	25°C (1)
<b>Coupled</b>						
R <sub>ON</sub>	On Resistance			630	Ω	I <sub>F</sub> = 2 mA
R <sub>OFF</sub>	Off Resistance	50			MΩ	10 sec after I <sub>F</sub> = 0.

Specifications subject to change without notice

103254 REV 2