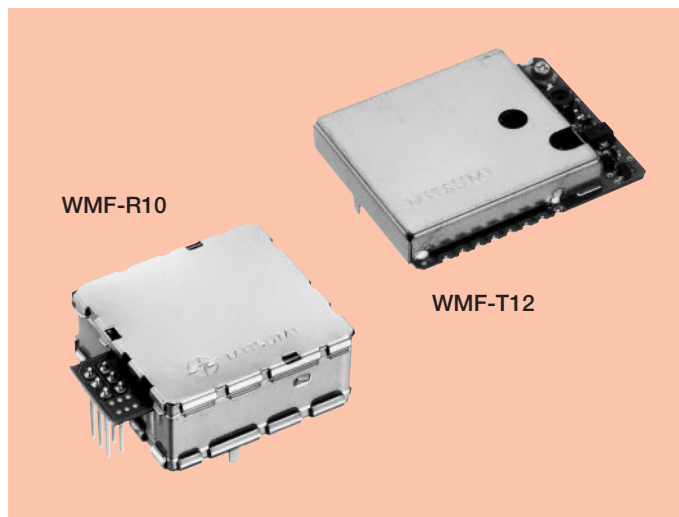


49MHz Band Transmitting-Receiving Module Conforming to FCC WMF-T12, R10

Telecommunication component

FEATURES

WMF series small electric wave type transceiver modules have been developed as a wireless controller for PC. Since these modules can be freely and directly soldered on PC boards, a non-directional wireless control system can easily be realized.



FEATURES

● Transmitting Module (WMF-T12)

1. Thin and lightweight.
2. Supply voltage 4.5V~5.5V.
3. Can be directly soldered on PC boards.
4. Low current consumption 20mA (typ.).
5. Can be paired with receiving module (WMF-R10).
6. 30ms (max.) rise time from power on.
7. 7 channels can be used, at 10kHz intervals.

● Receiving Module (WMF-R10)

1. Thin and lightweight.
2. 5V supply voltage.
3. Can be directly soldered on PC boards.
4. TTL level data output.
5. Can be paired with transmitting module (WMF-T12).

SPECIFICATIONS

● Transmitting Module (WMF-T12)

Item		Specifications			Remarks
		min.	typ.	max.	
Transmitting Frequency		49.83MHz~49.89MHz (10kHz step)			
Transmitting Output				80dBμV/m	at 3m
Deviation Width		1.0kHz	1.5kHz	2.0kHz	FSK
Data Input Level	HIGH	4.0V			
	LOW			0.4V	
Supply Voltage		4.5V	5.0V	5.5V	
Current Consumption					
Transmission Rate				4800bps	
Rock-up Time			25mS	30mS	

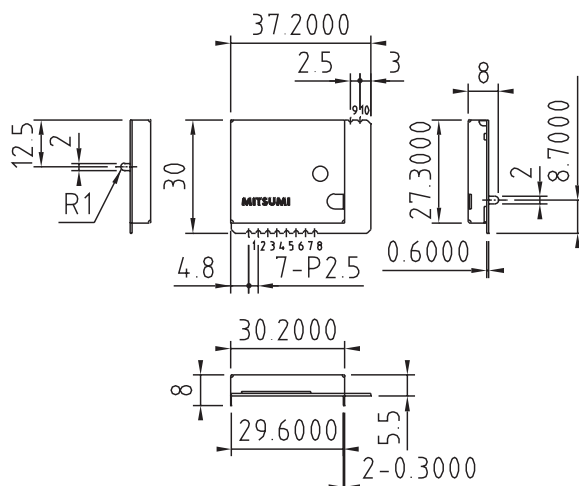
49MHz Band Transmitting-Receiving Module Conforming to FCC

● Receiving Module (WMF-R10)

Item	Specifications			Remarks
	min.	typ.	max.	
Receiving Frequency	49.83MHz~49.89MHz (10kHz step)			
Sensitivity			12dBμ	BER = 0.01 (4800dps PN9)
Spurious Response	35dB			
Data Output Level	HIGH	4.0V		
	LOW		0.4V	
Current Consumption		10mA	15mA	
Demodulated Transmission Rate			4800bps	

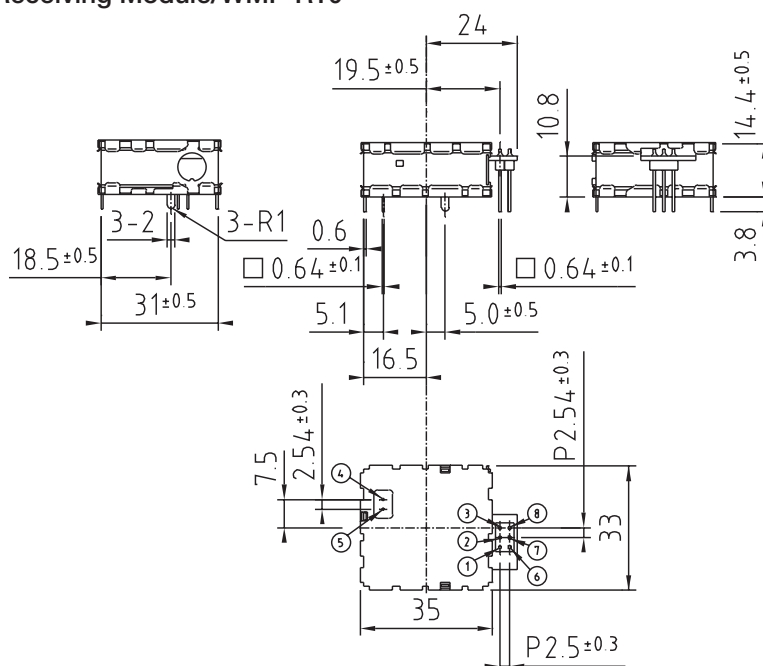
DIMENSIONS

● Transmitting Module/WMF-T12



TERMINALS	
1.	PLL CE
2.	PLL CL
3.	PLL DI
4.	LOCK
5.	DATA
6.	+B
7.	STROBE
8.	GND
9.	GND
10.	ANT

● Receiving Module/WMF-R10



TERMINALS	
1.	+B
2.	DATA OUT
3.	GROUND
4.	ANT
5.	ANT GROUND
6.	PLL CE
7.	PLL DA
8.	PLL CK
	CASE GROUND

Unit : mm