

Plug-In RF Transformer

50Ω 0.2 to 600 MHz

T4-2-X65+ T4-2-X65



CASE STYLE: X65
PRICE: \$3.95 ea. QTY (1-9)

+ RoHS compliant in accordance with EU Directive (2002/95/EC)

The +Suffix identifies RoHS Compliance. See our web site for RoHS Compliance methodologies and qualifications.

Maximum Ratings

Operating Temperature	-20°C to 85°C
Storage Temperature	55°C to 100°C
RF Power	250mW
DC Current	30mA

Pin Connections

PRIMARY DOT	6
PRIMARY	3
SECONDARY DOT	1
SECONDARY	3
CASE EXT.	3
NOT USED	2,4,5

Features

- wideband, 0.2 to 600 MHz
- good return loss
- also available with flat-pack (W38) & surface mount gull-wing (KK81) leads

Applications

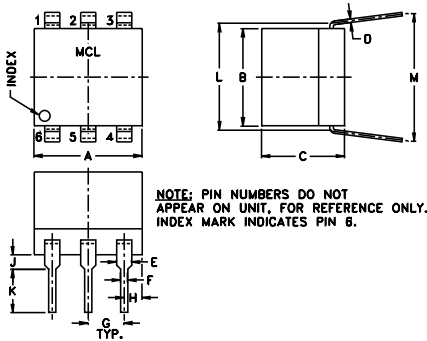
- impedance matching
- VHF/UHF

Transformer Electrical Specifications

Ω RATIO	FREQUENCY (MHz)	INSERTION LOSS*		
		3 dB MHz	2 dB MHz	1 dB MHz
4	0.2-600	0.2-600	5-500	2-250

* Insertion Loss is referenced to mid-band loss, 0.6 dB typ.

Outline Drawing



Outline Dimensions (inch/mm)

A	B	C	D	E	F	G
.30	.27	.23	.010	.042	.020	.100
7.62	6.86	5.84	0.25	1.07	0.51	2.54

H	J	K	L	M	wt
.05	.04	.11	.300	.35	grams
1.27	1.02	2.79	7.62	8.89	0.50

Typical Performance Data

FREQUENCY (MHz)	INSERTION LOSS (dB)	INPUT R. LOSS (dB)
0.20	1.37	11.78
0.63	0.93	16.67
2.00	0.66	21.14
154.00	0.62	16.06
290.00	0.72	8.60
380.00	0.86	5.52
455.00	1.04	3.83
520.00	1.27	2.95
570.00	1.50	2.41
600.00	1.66	2.16

Config. D

