

Plug-In RF Transformer

50Ω 0.5 to 800 MHz

T3-1-X65+ T3-1-X65



CASE STYLE: X65
PRICE: \$4.45 ea. QTY (1-9)

+ RoHS compliant in accordance with EU Directive (2002/95/EC)

The +Suffix identifies RoHS Compliance. See our web site for RoHS Compliance methodologies and qualifications.

Maximum Ratings

Operating Temperature	-20°C to 85°C
Storage Temperature	55°C to 100°C
RF Power	250mW
DC Current	30mA

Pin Connections

PRIMARY DOT	6
PRIMARY	3
SECONDARY DOT	1
SECONDARY	3
CASE EXT.	3
NOT USED	2,4,5

Features

- wideband, 0.5 to 800 MHz
- good return loss
- also available with flat-pack (W38) & surface mount gull-wing (KK81) leads

Applications

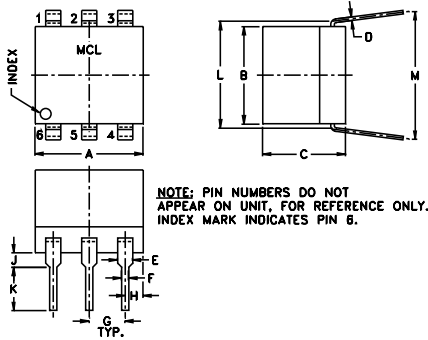
- impedance matching
- VHF/UHF

Transformer Electrical Specifications

Ω RATIO	FREQUENCY (MHz)	INSERTION LOSS*		
		3 dB MHz	2 dB MHz	1 dB MHz
3	0.5-800	0.5-800	2-400	—

* Insertion Loss is referenced to mid-band loss, 1.25 dB typ.

Outline Drawing



Outline Dimensions (inch/mm)

A	B	C	D	E	F	G
.30	.27	.23	.10	.042	.020	.100
7.62	6.86	5.84	2.54	1.07	0.51	2.54
H	J	K	L	M	wt	
.05	.04	.11	.300	.35	grams	
1.27	1.02	2.79	7.62	8.89	0.50	

Typical Performance Data

FREQUENCY (MHz)	INSERTION LOSS (dB)	INPUT R. LOSS (dB)
0.500	2.940	7.210
1.940	1.730	10.660
9.923	1.180	12.300
50.297	1.220	11.120
99.524	1.230	8.970
200.594	1.340	5.440
348.840	1.490	2.960
523.423	1.950	1.940
677.637	2.840	1.720
800.000	3.700	1.830

Config. D

