

Plug-In RF Transformer

50Ω 0.3 to 120 MHz

T13-1T-X65+ T13-1T-X65



Maximum Ratings

| | |
|-----------------------|---------------|
| Operating Temperature | -20°C to 85°C |
| Storage Temperature | 55°C to 100°C |
| RF Power | 0.25W |
| DC Current | 30mA |

Pin Connections

| | |
|---------------|---|
| PRIMARY DOT | 4 |
| PRIMARY | 6 |
| SECONDARY DOT | 3 |
| SECONDARY | 1 |
| SECONDARY CT | 2 |
| NOT USED | 5 |

Features

- good return loss
- also available with flat-pack (W38), & surface mount gull-wing (KK81) leads

Applications

- VHF receivers/transmitters
- impedance matching

CASE STYLE: X65
PRICE: \$4.95 ea. QTY (1-9)

+ RoHS compliant in accordance with EU Directive (2002/95/EC)

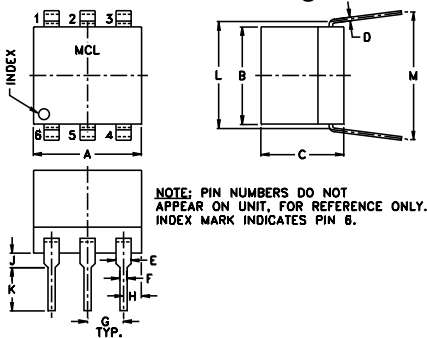
The +Suffix identifies RoHS Compliance. See our web site for RoHS Compliance methodologies and qualifications.

Transformer Electrical Specifications

| Ω RATIO | FREQUENCY (MHz) | INSERTION LOSS* | | |
|---------|-----------------|-----------------|----------|----------|
| | | 3 dB MHz | 2 dB MHz | 1 dB MHz |
| 13 | 0.3-120 | 0.3-120 | 0.7-80 | 5-20 |

*Insertion Loss is referenced to mid-band loss, 0.8 dB typ.

Outline Drawing



Outline Dimensions (inch/mm)

| | | | | | | |
|------|------|------|------|------|-------|------|
| A | B | C | D | E | F | G |
| .30 | .27 | .23 | .010 | .042 | .020 | .100 |
| 7.62 | 6.86 | 5.84 | 0.25 | 1.07 | 0.51 | 2.54 |
| H | J | K | L | M | wt | |
| .05 | .04 | .11 | .300 | .35 | grams | |
| 1.27 | 1.02 | 2.79 | 7.62 | 8.89 | 0.50 | |

Typical Performance Data

| FREQUENCY (MHz) | INSERTION LOSS (dB) | INPUT R. LOSS (dB) |
|-----------------|---------------------|--------------------|
| 0.30 | 2.14 | 8.01 |
| 0.70 | 1.54 | 11.30 |
| 4.00 | 0.95 | 14.78 |
| 8.00 | 0.89 | 15.23 |
| 16.00 | 0.88 | 14.87 |
| 38.00 | 1.03 | 12.35 |
| 65.00 | 1.33 | 9.47 |
| 88.00 | 1.64 | 7.64 |
| 108.00 | 1.95 | 6.44 |
| 120.00 | 2.15 | 5.82 |

Config. A

