

Plug-In Amplifier

AMP-3G

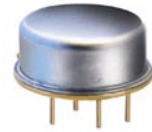
50Ω Low Power 30 to 3000 MHz

Features

- wideband, 30 to 3000 MHz
- low noise, 3.5 dB typ.
- hermetic, TO-8 can
- protected by US Patent 6,943,629

Applications

- military, hi-rel applications
- satellite communications
- cellular
- GPS
- MMDS
- ISM
- PCS/DCS



CASE STYLE: PP230
PRICE: \$94.45 ea. Qty. (1-9)

Amplifier Electrical Specifications

MODEL NO.	FREQUENCY (MHz)		GAIN (dB)		MAXIMUM POWER (dBm)			DYNAMIC RANGE		VSWR (:-1) Typ.		DC POWER	
	f_L	f_U	Min.	Flatness Max.	Output (1 dB Compr.)		Input (no damage)	NF (dB) Typ.	IP3 (dBm) Typ.	In	Out	Volt (V) Nom.	Current (mA) Max.
AMP-3G	30	3000	8	±0.75	+9.5 L	+9.5 U	+13	3.5*	+20	2.6	2.5	15	55

*Noise Figure increases with decreasing frequency, 5 dB typical at 300 MHz and 10 dB typ. at 30 MHz.

Open load is not recommended, potentially can cause damage.

With no load derate max input power by 20 dB

L= low range (f_L to $f_U/2$)

U= upper range ($f_U/2$ to f_U)

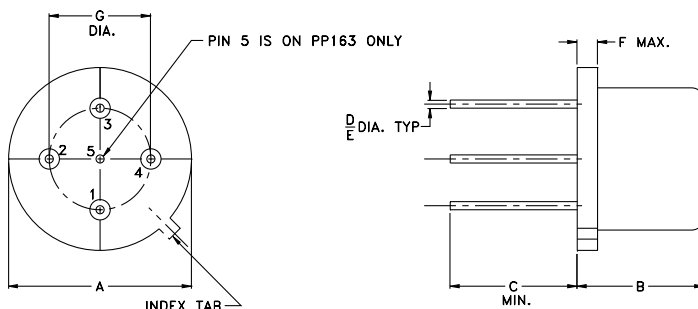
Pin Connections

RF IN	2
RF OUT	4
DC	1
GROUND	3
CASE GROUND	3

Maximum Ratings

Operating Temperature	-54°C to 85°C
Storage Temperature	-55°C to 100°C
DC Voltage	+17V Max.

Outline Drawing



NOTE: PIN NUMBERS DO NOT APPEAR ON UNIT, FOR REFERENCE ONLY.

Outline Dimensions (inch/mm)

A	B	C	D
.50	.250	.24	.016
12.70	6.35	6.10	0.41
E	F	G	wt
.020	.04	.300	grams
0.51	1.02	7.62	1.8

FREQUENCY (MHz)	GAIN (dB)			DIRECTIVITY (dB)			VSWR (:1) 15V		NOISE FIGURE (dB)	POUT at 1 dB COMPR. (dBm)
	12V	15V	16V	12V	15V	16V	IN	OUT		
30.00	9.39	9.72	9.78	7.80	7.50	7.40	1.22	1.03	3.37	11.65
51.60	9.34	9.69	9.80	7.80	7.50	7.30	1.22	1.03	3.18	11.73
116.50	9.17	9.55	9.60	8.20	7.80	7.80	1.22	1.03	3.11	11.74
262.80	9.13	9.49	9.55	8.30	7.90	7.90	1.22	1.03	3.08	11.79
592.90	9.13	9.46	9.53	8.30	8.00	7.90	1.22	1.03	3.05	11.79
1096.20	8.99	9.33	9.39	9.00	8.70	8.70	1.22	1.03	3.04	11.79
1324.60	8.90	9.21	9.29	9.40	9.30	9.20	1.22	1.04	3.02	12.21
1553.10	8.98	9.28	9.35	9.30	9.20	9.20	1.23	1.05	3.02	12.33
1705.40	9.10	9.39	9.46	9.30	9.20	9.20	1.25	1.08	2.95	12.21
1857.70	9.10	9.38	9.44	9.60	9.50	9.50	1.17	1.13	3.03	12.19
2086.20	9.12	9.40	9.45	9.90	9.80	9.90	1.40	1.04	2.85	12.95
2314.60	9.24	9.50	9.54	9.90	10.00	10.10	1.44	1.06	2.83	12.80
2543.10	9.04	9.28	9.33	10.40	10.70	10.80	1.42	1.05	2.77	12.72
2771.50	9.18	9.43	9.50	10.40	10.60	10.80	1.40	1.05	2.78	12.68
3000.00	8.92	9.17	9.22	10.60	11.00	11.20	1.39	1.04	2.75	12.66

