



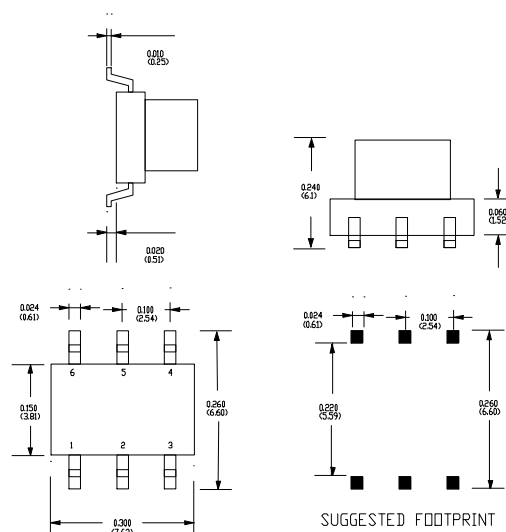
E-Series 75 Ohm Coupler 40 - 1000 MHZ

Features

- Coupling 7db Typical
- Surface Mount
- Tape and Reel Packaging available



SM-137 Package



Description

M/A-COM's MACPES0028 is a high performance 75 Ohm Coupler, in a SM-137 low cost, surface mount package.

Electrical Specifications @25°C

Frequency Range	40- 1000 MHz	Units	Nominal	Typical	Minimum	Maximum
Mainline Loss	40- 1000 MHz	dB	—	1.9	—	3.0
Coupling	40- 1000 MHz	dB	7.0	—	—	± 0.5
Directivity	40- 1000 MHz	dB	—	15.5	7.0	—
Input Return Loss	40- 1000 MHz	dB	—	22	15	—
Output Return Loss	40- 1000 MHz	dB	—	25	15	—
Coupled Return Loss	40- 1000 MHz	dB	—	22	14.5	—

Please Note that the photograph above indicates package shape only, unit may be wired differently.

S 1598 A



M/A-COM ■ North America: Tel. (800) 366-2266, Fax (800) 618-8883 ■ Asia/Pacific: Tel.+85 2 2111 8088, Fax +85 2 2111 8087 ■ Europe: Tel. +44 (1344) 869 595, Fax+44 (1344) 300 020

www.macom.com

Specifications subject to change without notice.

Operating Characteristics

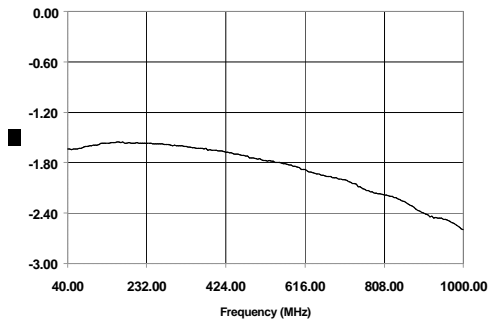
Function	Pin No.
Input	1
Output	6
Coupled	3
Ground	5
Not Connected	2
External 75 Ohms	4

Absolute Maximum Ratings

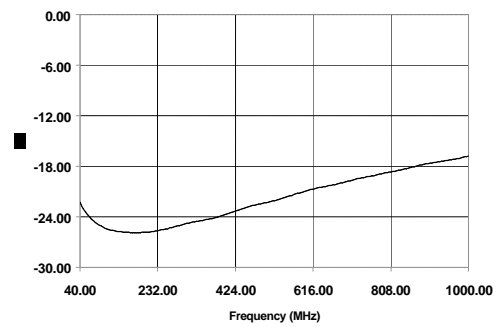
Parameter	Absolute Maximum
RF Power	250 mW
DC Current	30 mA
Pin Temperature (10 sec)	260°C
Operating/Storage Temperature	-40°C to +85°C

Typical Performance @ 25°C

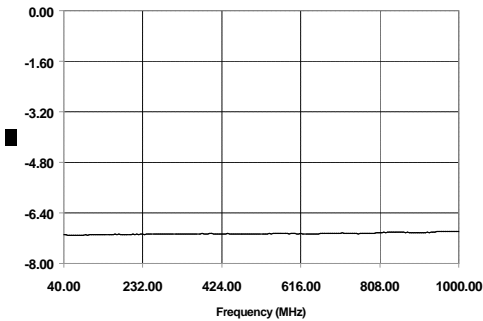
Mainline Loss



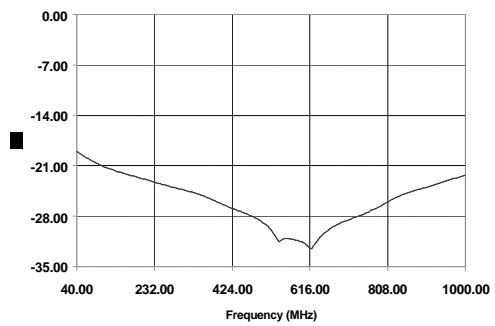
Input Return Loss



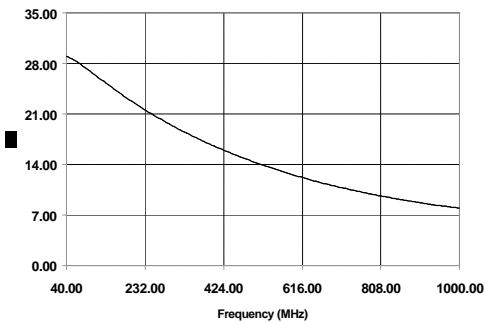
Coupling



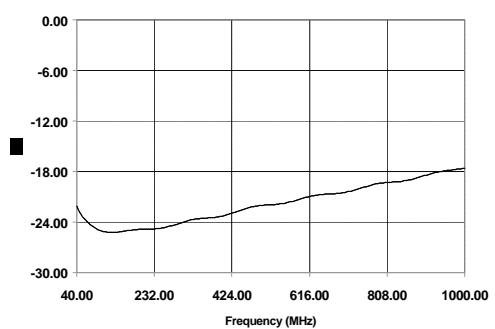
Output Return Loss



Directivity



Coupled Port Return Loss



S 1598 A



M/A-COM ■ North America: Tel. (800) 366-2266, Fax (800) 618-8883 ■ Asia/Pacific: Tel.+85 2 2111 8088, Fax +85 2 2111 8087 ■ Europe: Tel. +44 (1344) 869 595, Fax+44 (1344) 300 020

www.macom.com

Specifications subject to change without notice.