

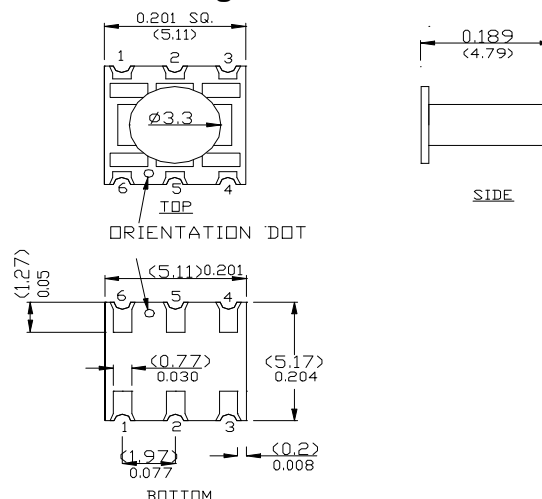


# E-Series RF 1:1 Transformer 4.5 - 2000 MHz

## Features

- Surface Mount
- 1:1 Impedance Ratio
- Available on Tape & Reel

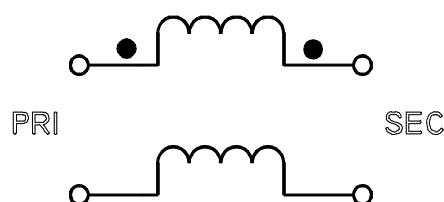
## SM-136 Package



## Description

M/A-COM's MABAES0018 is a 1:1 RF transformer in a low cost, surface mount package. Ideally suited for high volume applications.

## Schematic



## Electrical Specifications @25°C

Parameter	Units	Nominal	Maximum	Mean (x)	Sigma (σ)
Frequency Range 4.5 - 2000	MHz	—	—	—	—
Insertion Loss ( $f_L - f_U$ )	4.5 - 400 MHz	—	1.0	—	—
	400-1500Mhz	—	2.0	0.32	0.036
	1500 - 2000 MHz	—	3.5	—	—
Amplitude Unbalance 4.5 - 1000 MHz	dB	—	1.0	—	—
Phase Unbalance 4.5 - 1000 MHz	Degrees	—	20	—	—

Note: Mean and Sigma calculated from average loss at @  $(f_U - f_L)/2 + f_L$

Please Note that the photograph above indicates typical package only, not actual unit.



M/A-COM n North America: Tel. (800) 366-2266, Fax (800) 618-8883 n Asia/Pacific: Tel.+85 2 2111 8088, Fax +85 2 2111 8087 n Europe: Tel. +44 (1344) 869 595, Fax+44 (1344) 300 020

S 1593 A

**Absolute Maximum Ratings**

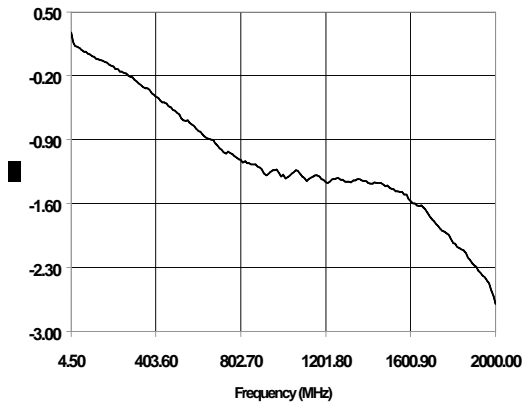
Parameter	Absolute Maximum
RF Power	250 mW
DC Current	30 mA
Operating/Storage Temperature	-40°C to +85°C

**Functional Configuration**

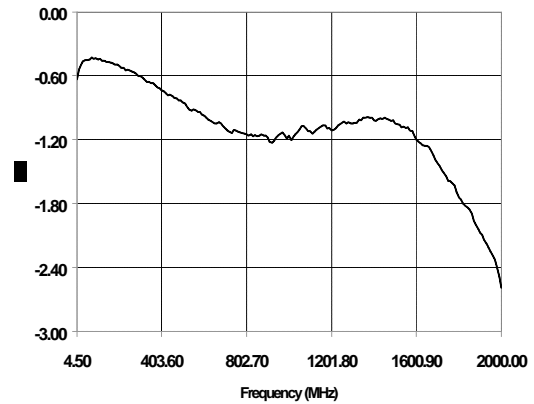
Function	Pin No.
Secondary Dot	1
Center Tap	-
Secondary	3
Primary	4
Not Connected	2,5
Primary Dot	6

**Typical Performance @ +25°C**

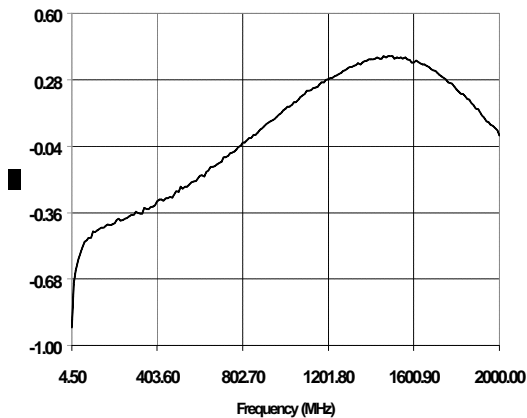
**Insertion Loss 1**



**Insertion Loss 2**



**Amplitude Unbalance**



**Phase Unbalance**

