



Class G fuse blocks are designed for use with 480 volt time-delay, current-limiting Class G fuses. They meet requirements for branch circuit protection.

SPECIFICATIONS

Voltage Ratings: 600 Volts AC (0 – 20A)
480 Volts AC (25 – 60A)

Ampere Ratings: 0 – 60 amperes

Approvals: UL Listed: 15, 20 & 60A (File No. E14853)
30A (File No. E14721)

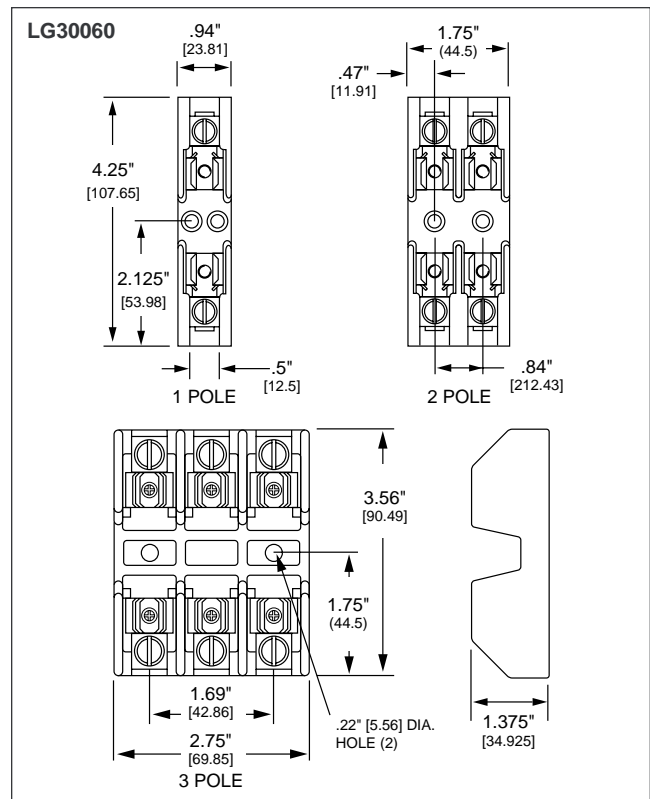
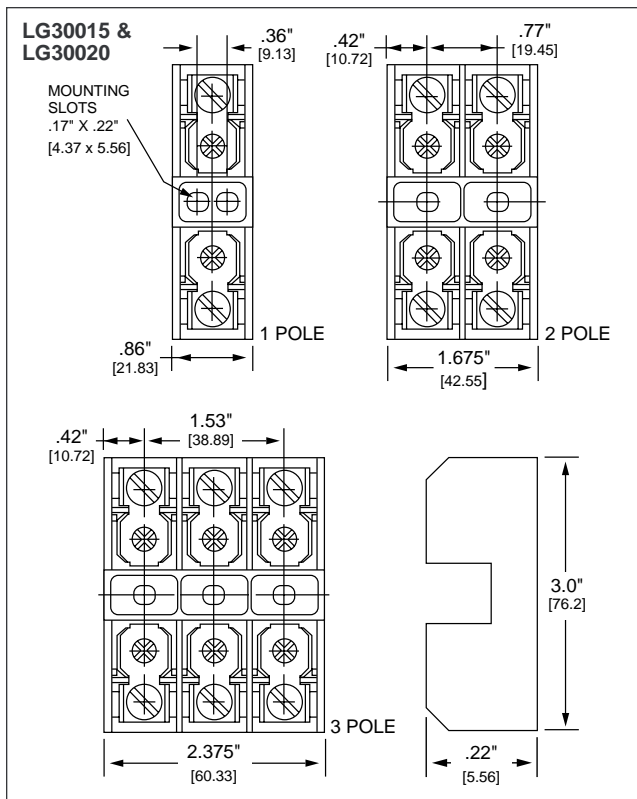
CSA Certified: 15, 20 & 60A (File No. LR47235)
30A (File No. LR7316)

RECOMMENDED FUSES

SLC series fuses

Amp Rating	No. of Poles	Catalog Number	Connector Type (Add suffix shown)			Maximum Wire Size
			Screw	Pressure Plate	Box Lug	
15*	1	LG30015-1	SQ			#10 CU
	2	LG30015-2	SQ			
	3	LG30015-3	SQ			
20*	1	LG30020-1	SQ			#10 CU
	2	LG30020-2	SQ			
	3	LG30020-3	SQ			
30*	1	L30030G-1	SQ	PQ		#10 CU
	2	L30030G-2	SQ	PQ		
	3	L30030G-3	SQ	PQ		
60	1	LG30060-1			CR	#2 CU-AL
	2	LG30060-2			CR	
	3	LG30060-3			CR	

* Note: 15, 20 & 30A Class G fuse blocks are equipped with 20A Quick Connect Terminals. 60A fuse block equipped with reinforcing spring as standard.



Blocks
And
Holders

Note: Refer to the Midget/Class CC Fuse Blocks for L30030G 30A Class G Block dimensions.