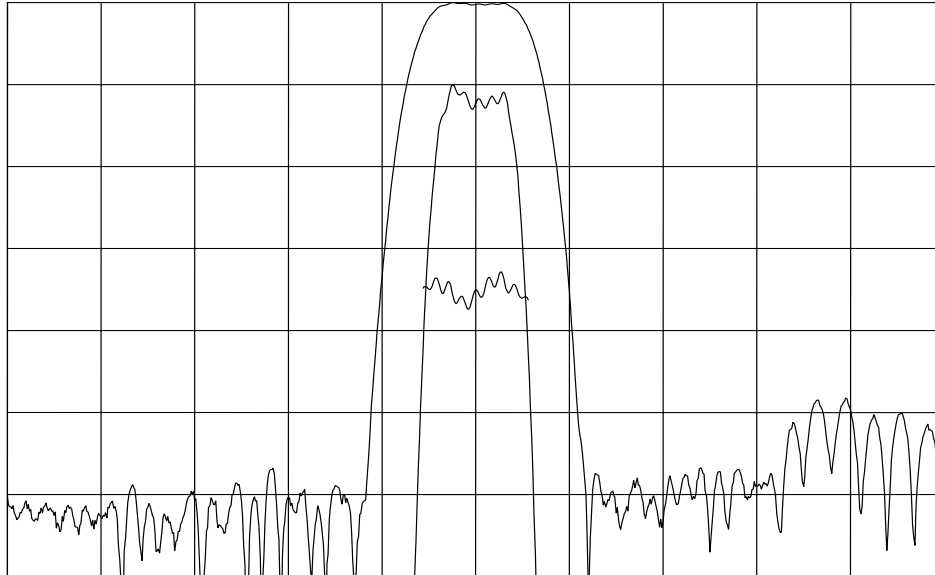




TYPICAL PERFORMANCE



Horizontal: 2.0 MHz/div

Vertical (from top): Magnitude
Magnitude
Phase

10 dB/div
1 dB/div
5 deg/div

SPECIFICATION

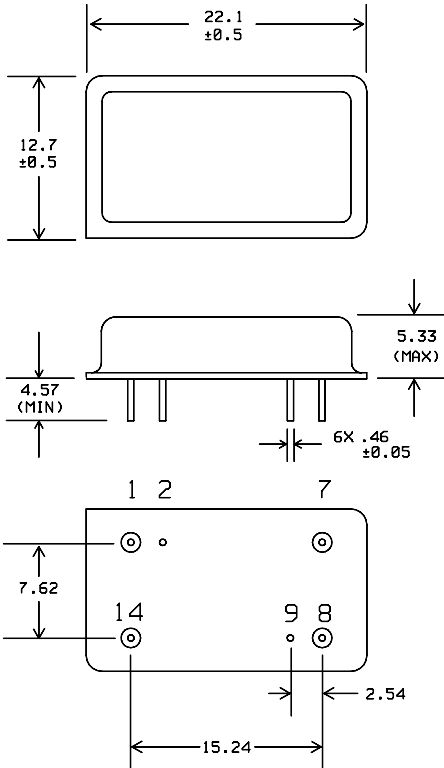
Parameter	Min	Typ	Max	Units
Center Frequency (Fc) ¹	159.90	160.00	160.10	MHz
3 dB Bandwidth	2.0	2.21		MHz
40 dB Bandwidth		4.16	5.20	MHz
Delay		1.800		μsec
Input Power			+10	dBm
Insertion Loss		18.8	21.0	dB
Source and Load Impedance		50		Ω
Phase Linearity ²		3.3	5	deg p-p
Passband Variation		0.4	0.5	dB p-p
Rejection (10 to Fo-2.6 MHz)	50	>50		dB
Rejection (Fo+2.6 to 172 MHz)	45	>45		dB
Rejection (172 to 280 MHz)	50	>50		dB
Operating Temperature Range		23		° C

- Notes: 1. All specified bandwidths are centered at or referenced to this frequency.
2. Computed as the delta of the highest and lowest points inside the 3 dB Bandwidth.



Micro Networks Corp., 324 Clark Street, Worcester, MA 01606, USA tel: 508-852-5400, fax:508-852-8456, www.micronetworks.com

PACKAGE OUTLINE

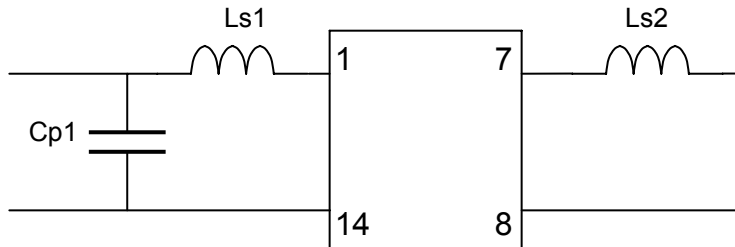


Units: mm

Pin Configuration:

Input:	1
Input Return:	14
Output:	7
Output Return:	8
Ground:	2,9

MATCHING CIRCUIT



Typical component values: $Ls1 = 100$ nH $Ls2 = 120$ nH
 (minimum inductor Q = 45) $Cp1 = 24$ pF

- Notes
- Requires 2% matching components.
 - Component values may change depending on board layout.



Micro Networks Corporation

Worldwide Headquarters ■ 324 Clark Street ■ Worcester, MA 01606 ■ tel: 508-852-5400 ■ fax: 508-852-8456
 European Sales Headquarters ■ Hertosingel 20 ■ 6214 AD Maastricht ■ The Netherlands ■ tel: +31-43-32-70912 ■ fax: +31-43-32-70715
www.micronetworks.com