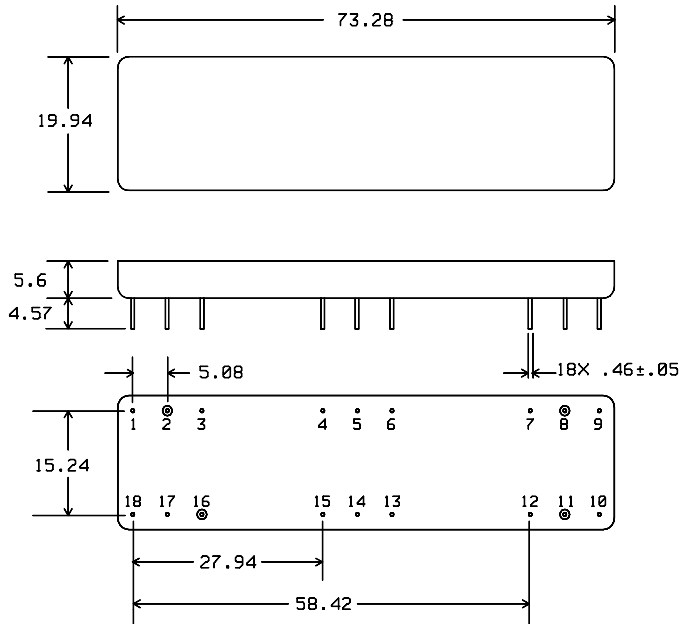




### PACKAGE OUTLINE

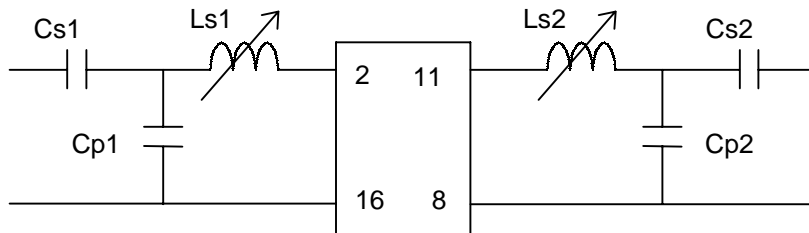


**Units:** mm

**Pin Configuration:**

Input: 2  
 Output: 11  
 Output Return: 8  
 Ground: 1,3,4,5,6,7,9,10,12,13,14,15,16,17,18

### MATCHING CIRCUIT



Typical component values: Ls1 = 150 nH ± 6% Cp1 = 75 pF Cs1 = 47 pF  
 (minimum inductor Q = 50) Ls2 = 150 nH ± 6% Cp2 = 82 pF Cs2 = 47 pF

- Notes - Requires 2% matching components.  
 - Component values may change depending on board layout.

ISO 9001  
Registered

**Micro Networks Corporation**

**Worldwide Headquarters** ■ 324 Clark Street ■ Worcester, MA 01606 ■ tel: 508-852-5400 ■ fax: 508-852-8456  
**European Sales Headquarters** ■ Hertosingel 20 ■ 6214 AD Maastricht ■ The Netherlands ■ tel: +31-43-32-70915 ■ fax: +31-43-32-70715  
[www.micronetworks.com](http://www.micronetworks.com)