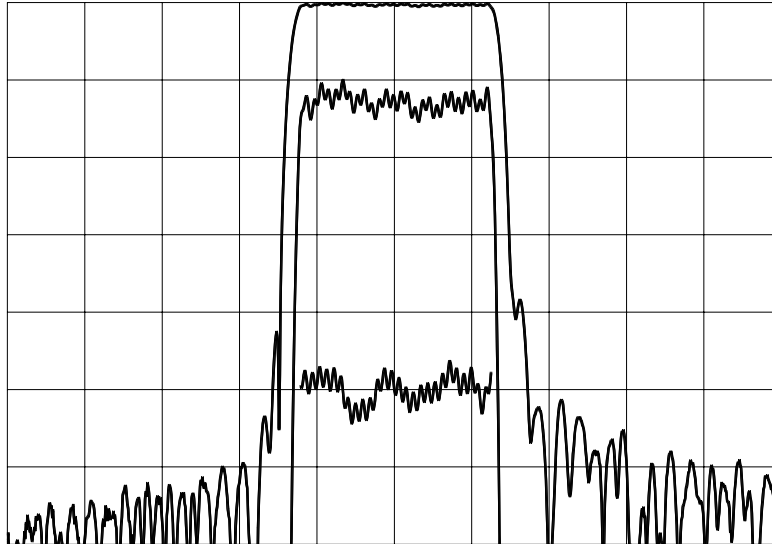




TYPICAL PERFORMANCE



Horizontal: 0.5 MHz/div

Vertical (from top): Magnitude 10 dB/div
Magnitude 1 dB/div
Phase 5 deg/div

SPECIFICATION

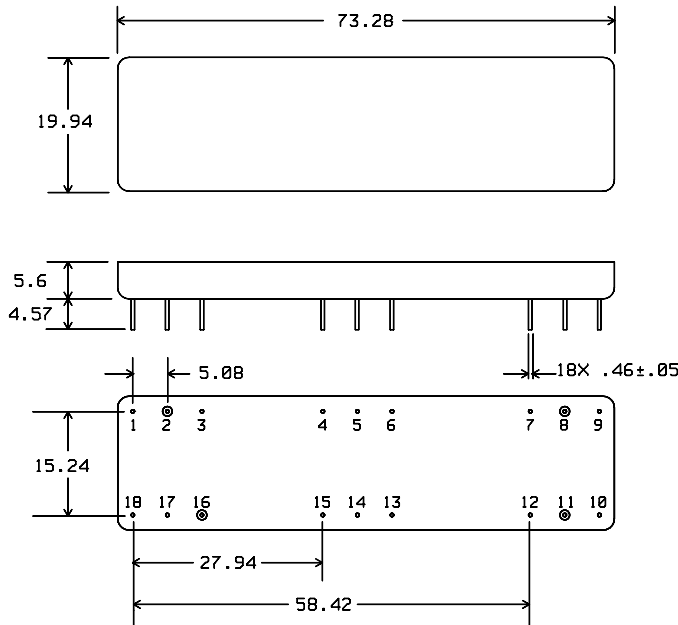
Parameter	Min	Typ	Max	Units
Center Frequency (Fc)		70.00		MHz
Insertion Loss		20	22	dB
Lower 1.5 dB Frequency		69.36	69.37	MHz
Upper 1.5 dB Frequency	70.63	70.64		MHz
Lower 35 dB Frequency	69.25	69.26		MHz
Upper 35 dB Frequency		70.74	70.75	MHz
Ultimate Rejection at $F_c \pm 0.90$ MHz	50	55		dB
Triple Transit Suppression	30	40		dB
Passband Amplitude Ripple		0.5	0.7	dB p-p
Passband Phase Linearity ¹		4	10	deg p-p
Operating Temperature	-5	23	65	°C
Source and Load Impedance		50		Ω

Notes: 1. Over center 1.23 MHz.



Micro Networks Corp., 324 Clark Street, Worcester, MA 01606, USA tel: 508-852-5400, fax:508-852-8456, www.micronetworks.com

PACKAGE OUTLINE

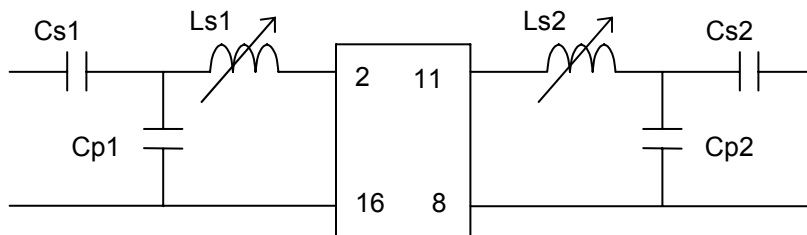


Units: mm

Pin Configuration:

Input: 2
 Output: 11
 Output Return: 8
 Ground: 1,3,4,5,6,7,9,10,12,13,14,15,16,17,18

MATCHING CIRCUIT



Typical component values: Ls1 = 150 nH ± 6% Cp1 = 75 pF Cs1 = 47 pF
 (minimum inductor Q = 50) Ls2 = 150 nH ± 6% Cp2 = 82 pF Cs2 = 47 pF

- Notes - Requires 2% matching components.
 - Component values may change depending on board layout.

ISO 9001
Registered

Micro Networks Corporation

Worldwide Headquarters ■ 324 Clark Street ■ Worcester, MA 01606 ■ tel: 508-852-5400 ■ fax: 508-852-8456
 European Sales Headquarters ■ Hertosingel 20 ■ 6214 AD Maastricht ■ The Netherlands ■ tel: +31-43-32-70912 ■ fax: +31-43-32-70715
www.micronetworks.com