

Customer Name	<b>Standard specification</b>	FUJITSU MEDIA DEVICES LIMITED	
Application	IF Filter for Terrestrial-TV		
System	Japan (1SEG)		
Picture Carrier Frequency	57.00 MHz	DATE	Mar. 13 2003
FMD Part Number	SBF065DAPL	Version 1.0	01

**Table 1 Electrical Specification (Ta=25°C)**

Items	Conditions	Specification			Unit	Remarks
		Min.	Typ.	Max.		
Center Frequency		—	57.00	—	MHz	
Insertion Loss	57.00 MHz	24.8	25.8	26.8	dB	
Relative level	48.250 ~ 53.500 MHz	—	-45	-38	dB	
	52.750 MHz	—	-51	-42	dB	
	56.000 MHz	—	-25	-15	dB	
	56.782 MHz	-1.0	0.1	—	dB	
	57.000 MHz	—	0	—	dB	Reference
	57.218 MHz	-1.0	-0.3	-	dB	
	58.024 MHz	—	-19	-15	dB	
	58.830 ~ 59.266 MHz	—	-28	-22	dB	
	64.750 MHz		-54	-42	dB	
	60.250 ~ 65.500 MHz	-	-39	-33	dB	
Amplitude ripple (p-p)	56.782 ~ 57.218 MHz	-	0.4	-	dB	
Group delay ripple (p-p)	56.782 ~ 57.218 MHz	—	10	—	ns	
Input Capacitance	Cin (1.0 MHz)	—	28.0	—	pF	
Output Capacitance	Cout (1.0 MHz)	—	10.6	—	pF	
Temperature coefficient		—	-18	—	ppm/°C	

Customer Name	Standard specification	FUJITSU MEDIA DEVICES LIMITED	
Application	IF Filter for Terrestrial-TV		
System	Japan (1SEG)		
Picture Carrier Frequency	57.00 MHz	DATE	Mar. 13 2003
FMD Part Number	SBF065DAPL	Version 1.0	01

## ● Dimensions

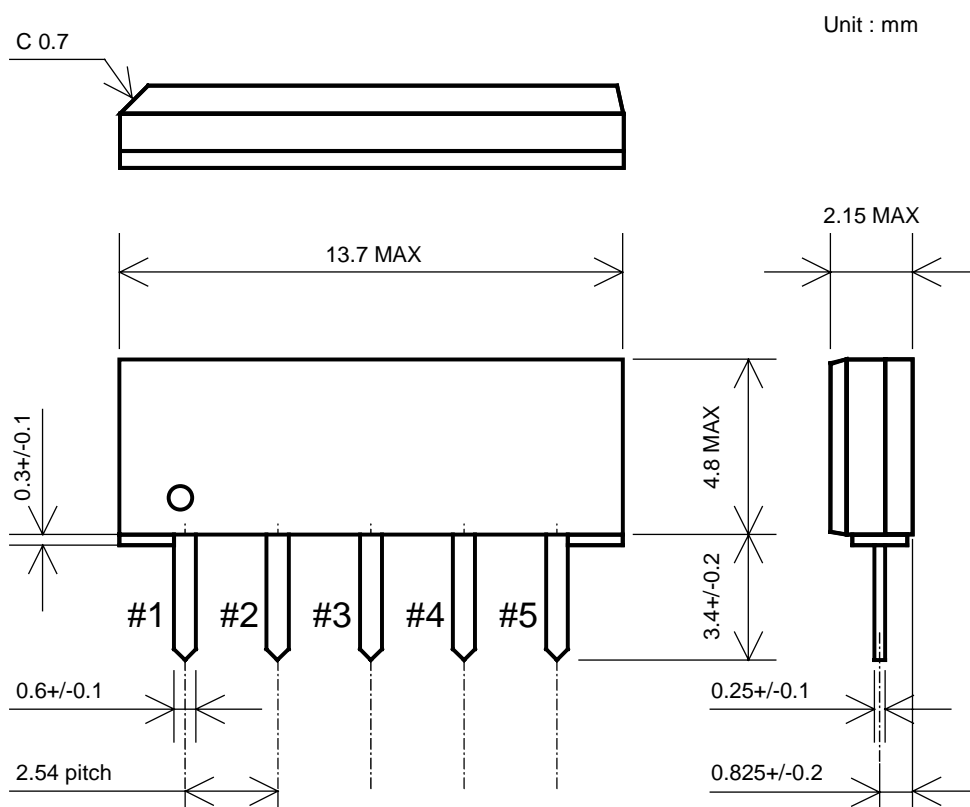


Fig.1

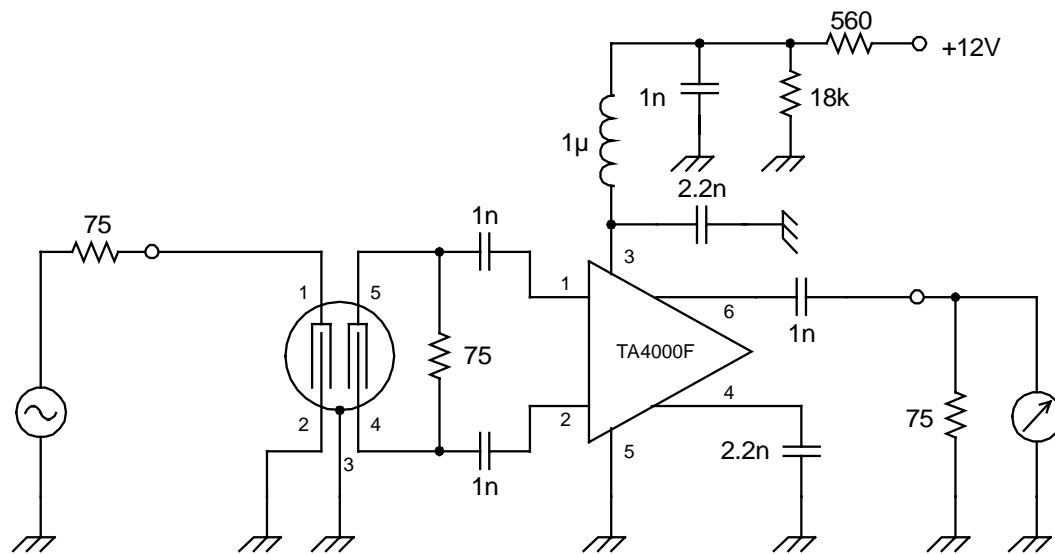
## ● Pin Configuration

Table 2

Pin No.	Symbol	Function
#1	IN	Input
#2	IN(GND)	Input(Ground)
#3	GND	Ground
#4	OUT	Output
#5	OUT	Output

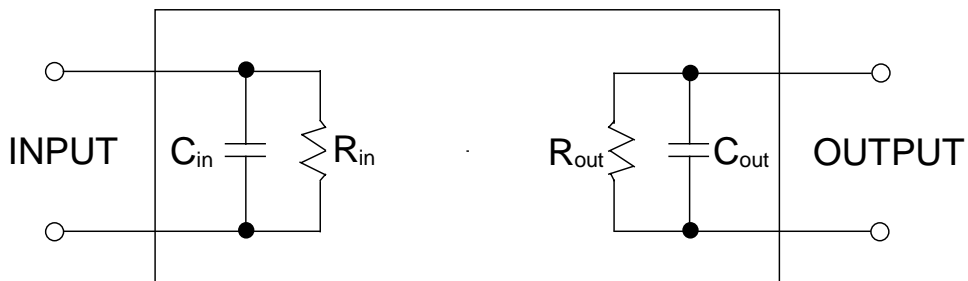
Customer Name	Standard specification	FUJITSU MEDIA DEVICES LIMITED	
Application	IF Filter for Terrestrial-TV		
System	Japan (1SEG)		
Picture Carrier Frequency	57.00 MHz	DATE	Mar. 13 2003
FMD Part Number	SBF065DAPL	Version 1.0	01

- **Evaluation Circuit**



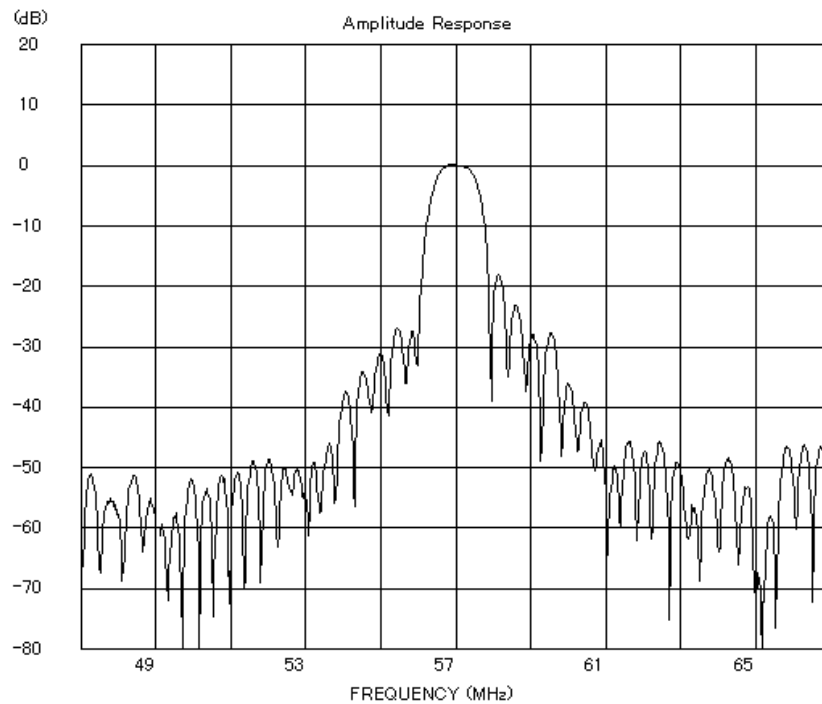
**Fig.2 Evaluation circuit**

- **Equivalent Circuit**

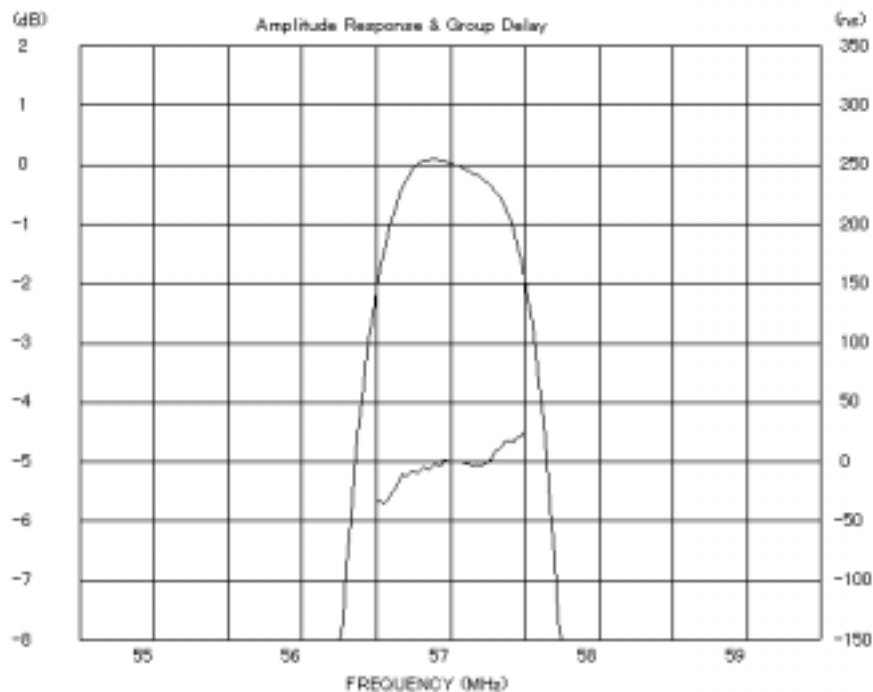


**Fig.3 Equivalent circuit**

Customer Name	<b>Standard specification</b>	FUJITSU MEDIA DEVICES LIMITED	
Application	IF Filter for Terrestrial-TV		
System	Japan (1SEG)		
Picture Carrier Frequency	57.00 MHz	DATE	Mar. 13 2003
FMD Part Number	SBF065DAPL	Version 1.0	01



### Frequency Characteristics



### In-band Characteristics