

Customer Name	Standard specification	FUJITSU MEDIA DEVICES LIMITED	
Application	IF Filter for Terrestrial-TV		
System	Japan (3SEG)		
Picture Carrier Frequency	57.00 MHz	DATE	Mar. 13 2003
FMD Part Number	SBF0601CPL	Version 1.0	01

Table 1 Electrical Specification (Ta=25°C)

Items	Conditions	Specification			Unit	Remarks
		Min.	Typ.	Max.		
Center Frequency		—	57.00	—	MHz	
Insertion Loss	57.00 MHz	21.1	22.6	24.1	dB	
Relative level	47.000 ~ 53.500 MHz	—	-44	-39	dB	
	55.500 MHz	—	-24	-18	dB	
	56.357 MHz	-1.2	-0.4	—	dB	
	57.000 MHz	—	0	—	dB	Reference
	57.643 MHz	-1.2	-0.6	—	dB	
	58.024 MHz	—	-4.6	-3.0	dB	
	58.405 MHz	—	-20	-15	dB	
	61.096 MHz	—	-50	-40	dB	
	64.549 MHz	—	-50	-40	dB	
	60.250 ~ 67.000 MHz	-	-40	-35	dB	
Amplitude ripple (p-p)	56.357 ~ 57.643 MHz	-	0.7	-	dB	
Group delay ripple (p-p)	56.357 ~ 57.643 MHz	—	30	—	ns	
Input Capacitance	Cin (1.0 MHz)	—	28.0	—	pF	
Output Capacitance	Cout (1.0 MHz)	—	10.6	—	pF	
Temperature coefficient		—	-18	—	ppm/°C	

- **Dimensions**



- **Pin Configuration**

Table 2

Pin No.	Symbol	Function
#1	IN	Input
#2	IN(GND)	Input(Ground)
#3	GND	Ground
#4	OUT	Output
#5	OUT	Output

Customer Name	Standard specification	FUJITSU MEDIA DEVICES LIMITED	
Application	IF Filter for Terrestrial-TV		
System	Japan (3SEG)		
Picture Carrier Frequency	57.00 MHz	DATE	Mar. 13 2003
FMD Part Number	SBF0601CPL	Version 1.0	01

- **Evaluation Circuit**

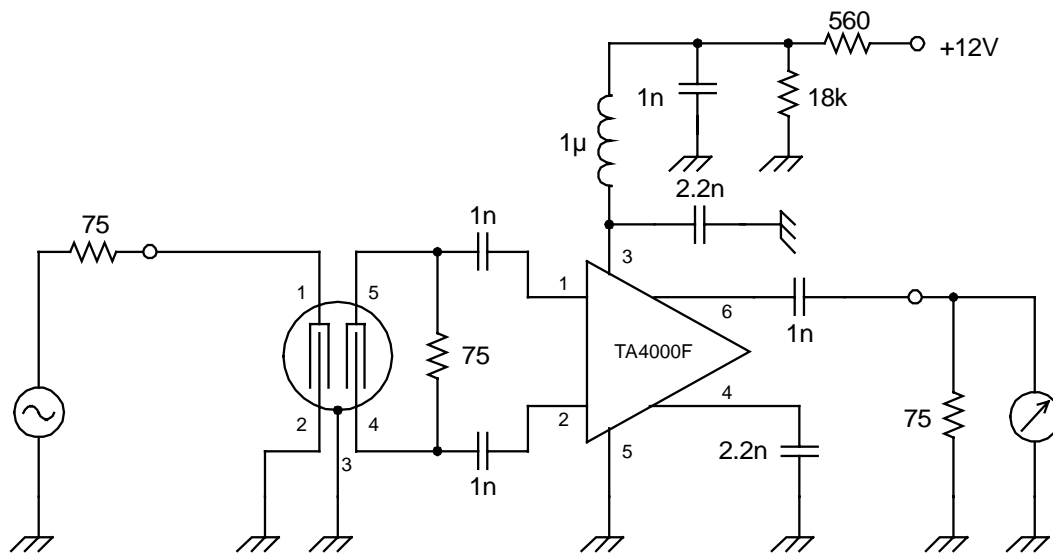


Fig.2 Evaluation circuit

- **Equivalent Circuit**

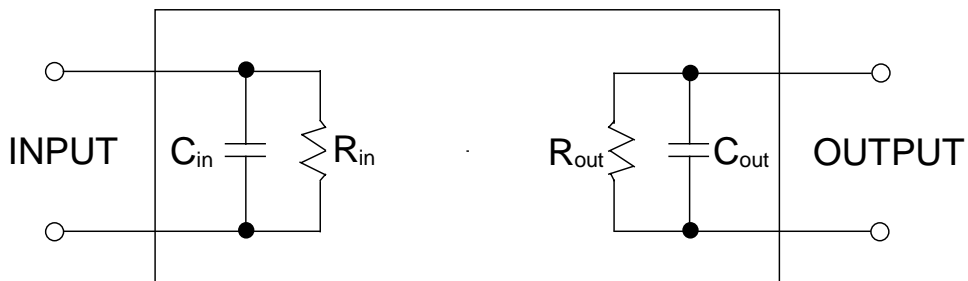
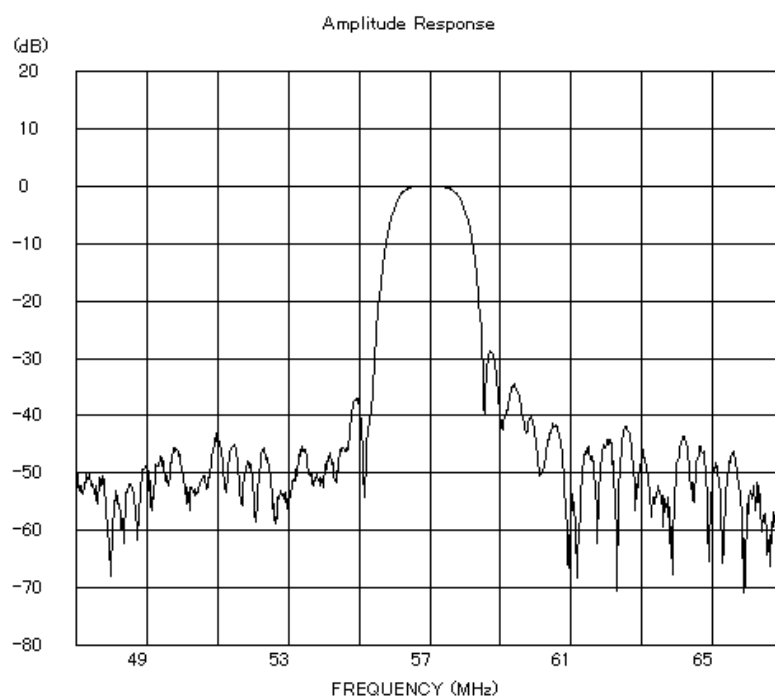
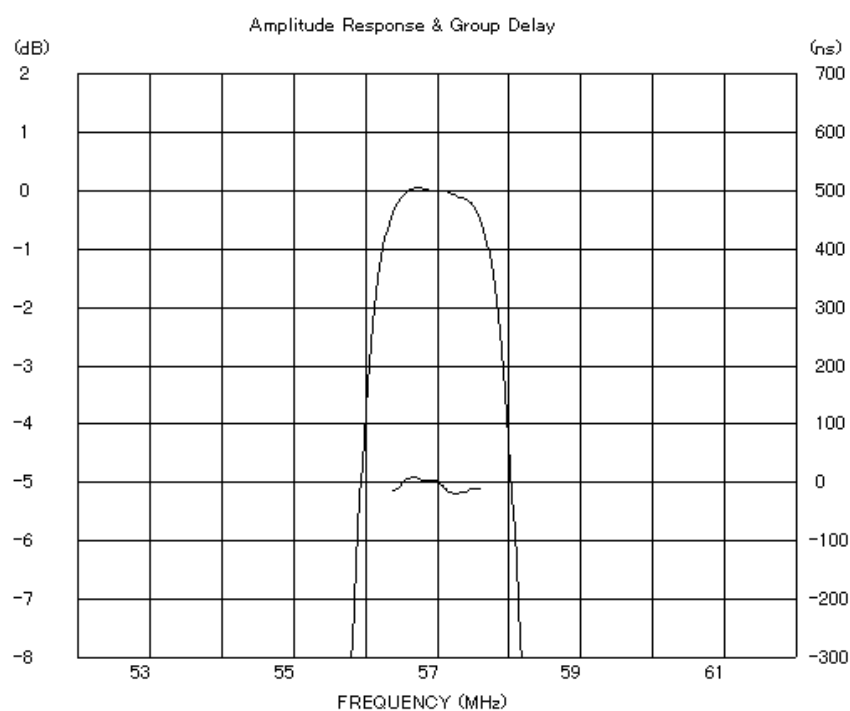


Fig.3 Equivalent circuit

Customer Name	Standard specification	FUJITSU MEDIA DEVICES LIMITED	
Application	IF Filter for Terrestrial-TV		
System	Japan (3SEG)		
Picture Carrier Frequency	57.00 MHz	DATE	Mar. 13 2003
FMD Part Number	SBF0601CPL	Version 1.0	01



Frequency Characteristics



In-band Characteristics