

Customer Name	Standard specification	FUJITSU MEDIA DEVICES LIMITED	
Application	IF Filter for TV(PIF+SIF)		
System	M/N		
Picture Carrier Frequency	45.75 MHz	DATE	Sep. 09 2002
FMD Part Number	F812PPL	Version 1.2	

Table 1-1 Electrical Specification (Ta=25°C)

Video Channel						
Items	Conditions	Specification			Unit	Remarks
		Min.	Typ.	Max.		
Insertion Loss	fp-1.75 (44.064 MHz)	14.1	15.6	17.1	dB	
Relative level	fp-6.0 (39.814 MHz)	—	-47	-37	dB	
	fp-4.5 (41.314 MHz)	—	-20	-11	dB	
	fp-3.75 (42.064 MHz)	3.0	4.5	6.0	dB	
	fp-3.58 (42.234 MHz)	3.5	5.0	6.5	dB	
	fp-1.75 (44.064 MHz)	4.0	5.3	6.6	dB	
	fp (45.814 MHz)	—	0	—	dB	Reference
	fp+1.5 (47.314 MHz)	—	-43	-37	dB	
	35.064 ~ 39.814 MHz	—	-34	-28	dB	
	47.314 ~ 55.064 MHz	—	-33	-28	dB	
Amplitude ripple	42.234 ~ 45.814 MHz	—	0.2	0.6	dB	
Group delay	fp-3.58 (42.234 MHz)	—	190	—	ns	
	fp-3.0 (42.814 MHz)	27	77	127	ns	
	fp-2.0 (43.814 MHz)	-26	24	74	ns	
	fp-1.0 (44.814 MHz)	-50	0	50	ns	
	fp (45.814 MHz)	—	0	—	ns	Reference
Group delay ripple	42.234 ~ 45.814 MHz	—	25	60	ns	
Input Capacitance	Cin (1.0 MHz)	—	25.6	—	pF	
Output Capacitance	Cout(V) (1.0 MHz)	—	3.7	—	pF	
Temperature coefficient		—	-72	—	ppm/°C	

Customer Name	Standard specification	FUJITSU MEDIA DEVICES LIMITED	
Application	IF Filter for TV(PIF+SIF)		
System	M/N		
Picture Carrier Frequency	45.75 MHz	DATE	Sep. 09 2002
FMD Part Number	F812PPL	Version 1.2	

Table 1-2 Electrical Specification (Ta=25°C)

Sound Channel						
Items	Conditions	Specification			Unit	Remarks
		Min.	Typ.	Max.		
Insertion Loss	fp-4.5 (41.314 MHz)	12.5	14.5	16.5	dB	
Relative level	fp-6.0 (39.814 MHz)	—	-36	-30	dB	
	fp-4.5 (41.314 MHz)	—	0	—	dB	Reference
	fp-3.58 (42.234 MHz)	—	-25	-18	dB	
	fp (45.814 MHz)	—	-48	-35	dB	
	fp+1.5 (47.314 MHz)	—	-42	-30	dB	
	35.064 ~ 39.814 MHz	—	-30	-25	dB	
	47.314 ~ 55.064 MHz	—	-35	-28	dB	
Input Capacitance	Cin (1.0 MHz)	—	25.6	—	pF	
Output Capacitance	Cout(S) (1.0 MHz)	—	2.5	—	pF	
Temperature coefficient		—	-72	—	ppm/°C	

Customer Name	Standard specification	FUJITSU MEDIA DEVICES LIMITED	
Application	IF Filter for TV(PIF+SIF)		
System	M/N		
Picture Carrier Frequency	45.75 MHz	DATE	Sep. 09 2002
FMD Part Number	F812PPL	Version 1.2	

● Dimensions

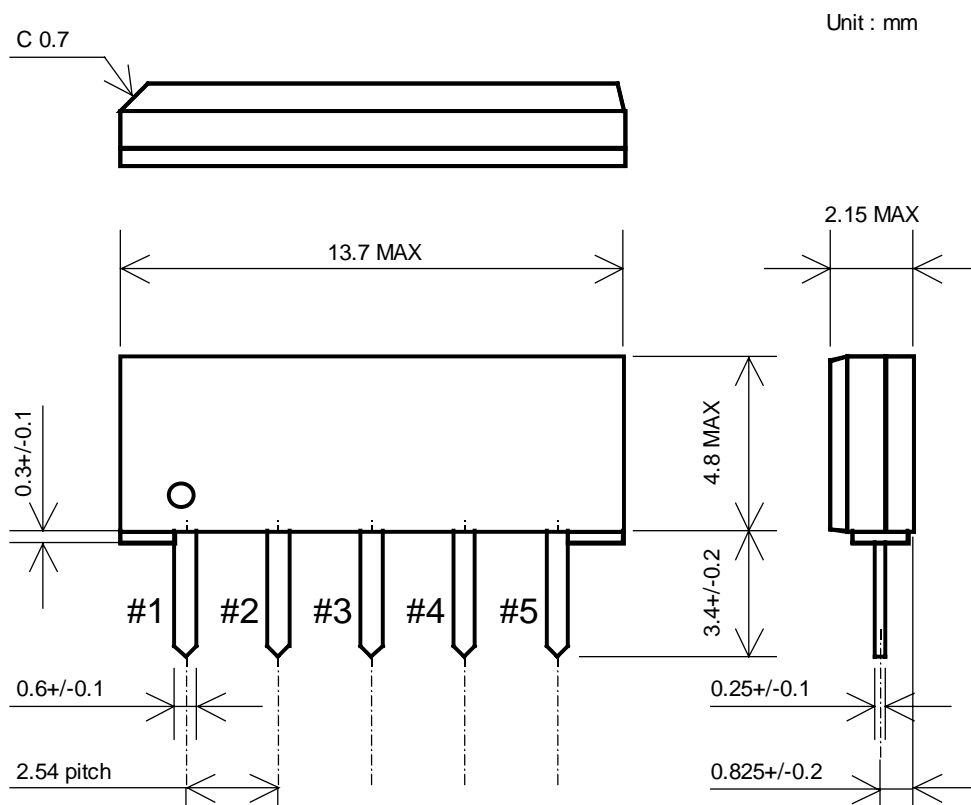


Fig.1

● Pin Configuration

Table 2

Pin No.	Symbol	Function
#1	IN	Input
#2	GND	Ground
#3	OUT(S)	Output(Sound)
#4	OUT(V)	Output(Video)
#5	OUT(V)	Output(Video)

Customer Name	Standard specification	FUJITSU MEDIA DEVICES LIMITED	
Application	IF Filter for TV(PIF+SIF)		
System	M/N		
Picture Carrier Frequency	45.75 MHz	DATE	Sep. 09 2002
FMD Part Number	F812PPL	Version 1.2	

- **Evaluation Circuit**

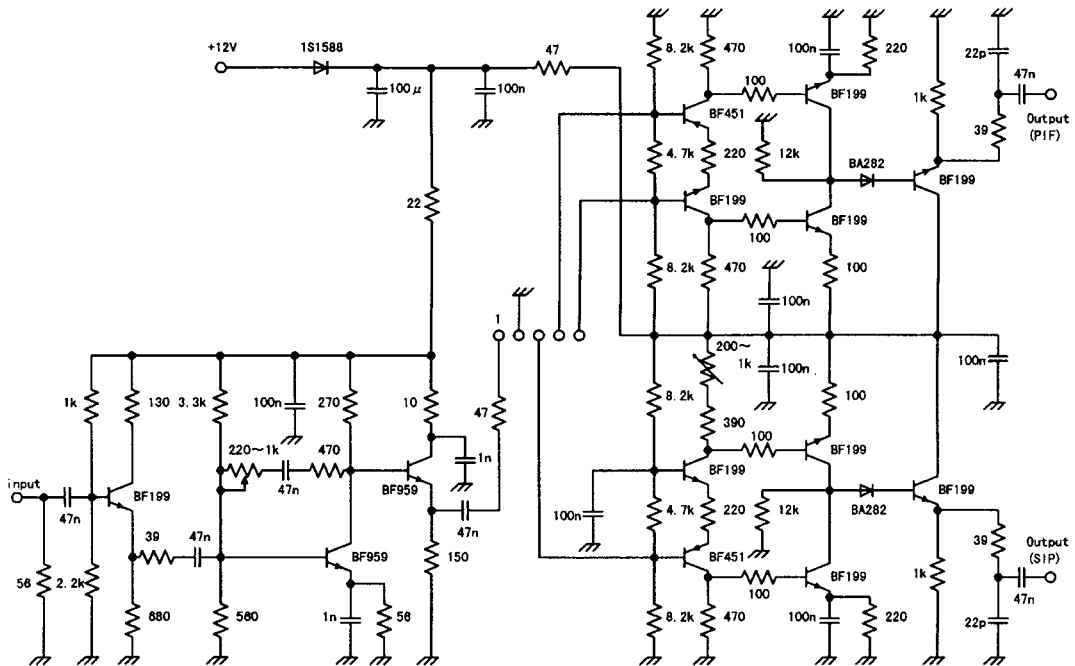


Fig.2 Evaluation circuit

- **Equivalent Circuit**

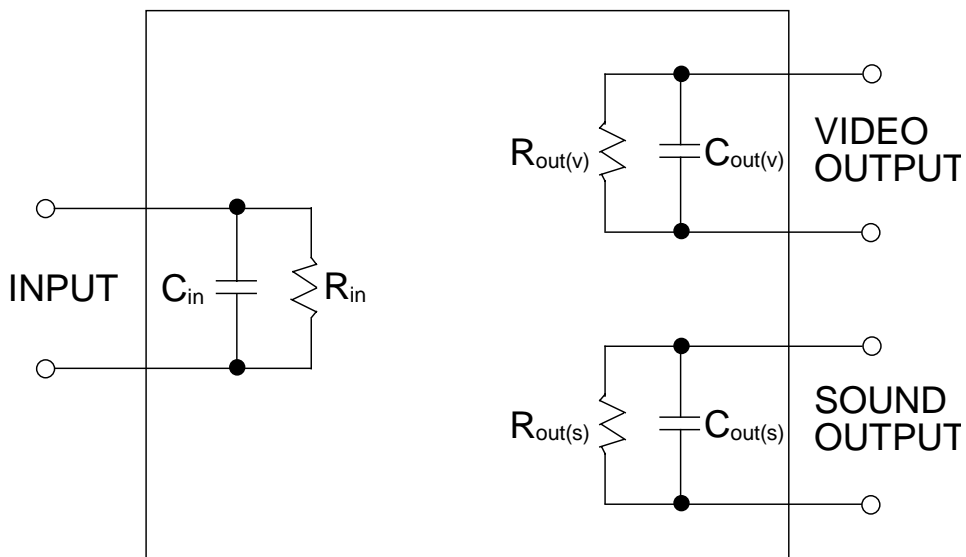
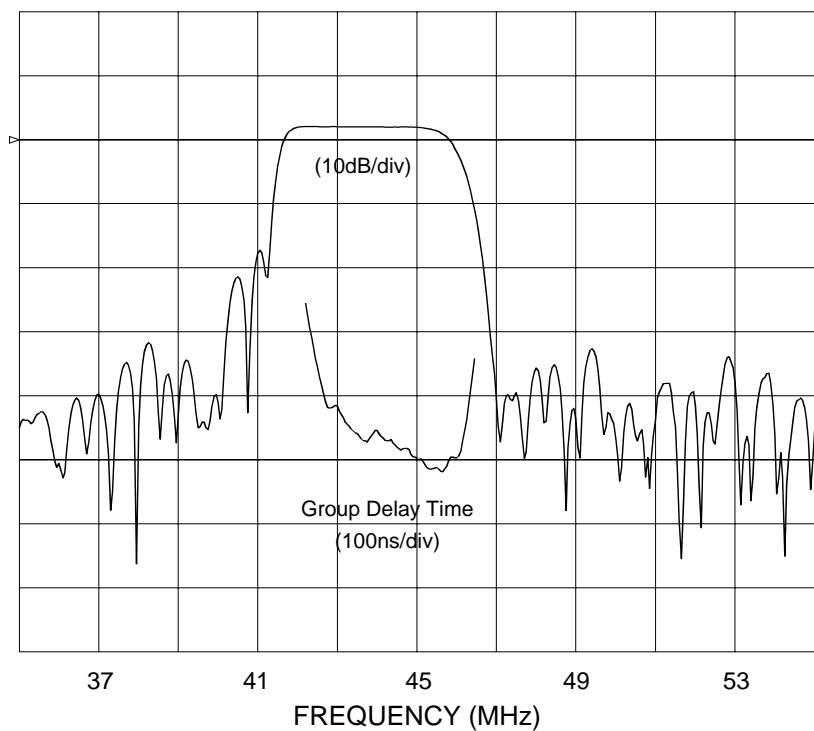


Fig.3 Equivalent circuit

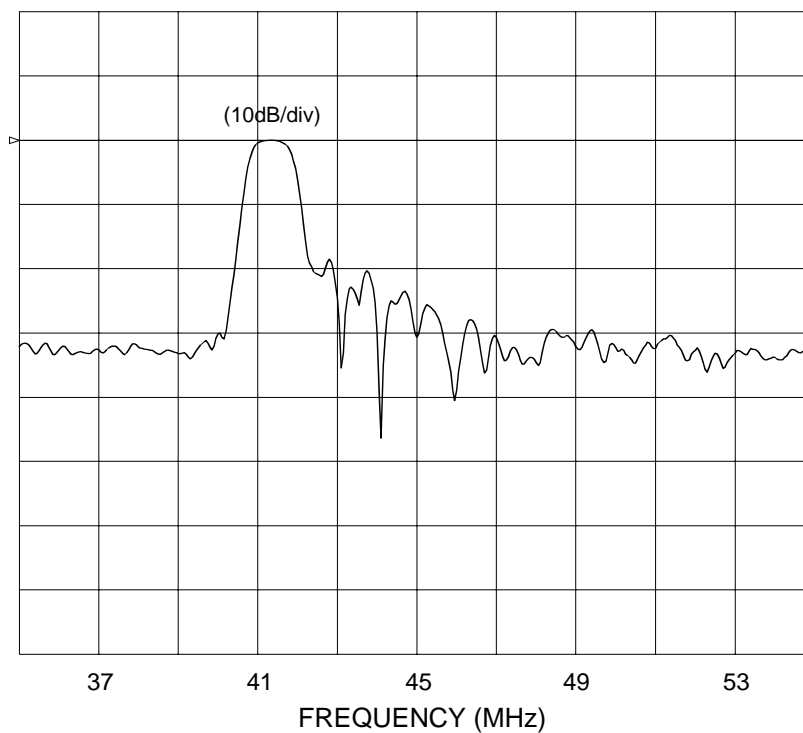
Customer Name	Standard specification	FUJITSU MEDIA DEVICES LIMITED	
Application	IF Filter for TV(PIF+SIF)		
System	M/N		
Picture Carrier Frequency	45.75 MHz	DATE	Sep. 09 2002
FMD Part Number	F812PPL	Version 1.2	

Video CH



Frequency Characteristics

Sound CH



Frequency Characteristics