



TAI-SAW TECHNOLOGY CO., LTD.

No. 3, Industrial 2nd Rd., Ping-Chen Industrial District,
Taoyuan, 324, Taiwan, R.O.C.

TEL: 886-3-4690038 FAX: 886-3-4697532

E-mail: tstsales@mail.taisaw.com Web: www.taisaw.com

Approval Sheet For Product Specification

Issued Date:

Product Name: SAW FILTER 426.1 MHz SMD 5.0 SQ

TST Parts No.: TA0192A

Customer Parts No.: _____

Company: _____
Division: _____
Approved by : _____
Date: _____

Checked by: _____ Bob Chau

Approval by: _____ Vincent Lee

Date: _____ Feb.25,2002



TAI-SAW TECHNOLOGY CO., LTD.

No. 3, Industrial 2nd Rd., Ping-Chen Industrial District,

Taoyuan, 324, Taiwan, R.O.C.

TEL: 886-3-4690038 FAX: 886-3-4697532

E-mail: tstsales@mail.taisaw.com Web: www.taisaw.com

SAW Filter 426.1 MHz

MODEL NO.: TA0192A

REV. NO.:1

A. MAXIMUM RATING:

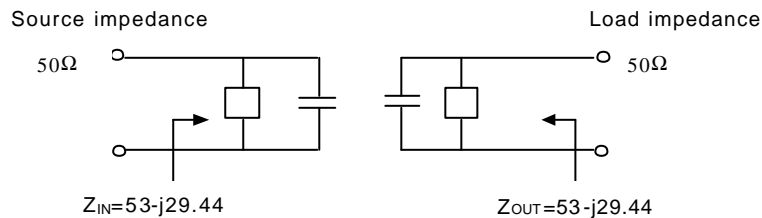
1. Input Power Level: 10 dB_m
2. DC voltage: 0 V
3. Operating Temperature: -10°C to +60°C
4. Storage Temperature: -20°C to +75°C

B. ELECTRICAL CHARACTERISTICS:

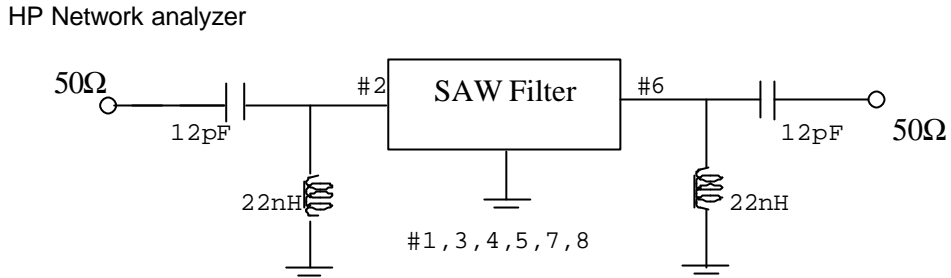
Characteristics		Min.	Typ.	Max.
Center frequency	F_c (dB)	-	426.1	-
Insertion loss (within 426.012 ~ 426.150 MHz)	IL (dB)	-	2.5	3.5
Ripple Deviation (p-p) (within 426.012 ~ 426.150 MHz)	(dB)	-	0.1	1.5
Absolute Attenuation Within 382.012 ~ 384.150 MHz	(dB)	50.0	68.0	-
Within 468.012 ~ 470.150 MHz (Plus Image Frequency)	(dB)	50.0	68.0	-
Source impedance	Z_s (Ω)	-	53-j29.44	-
Load impedance	Z_L (Ω)	-	53-j29.44	-

Note1. The standard definitions is in JIS C 6703

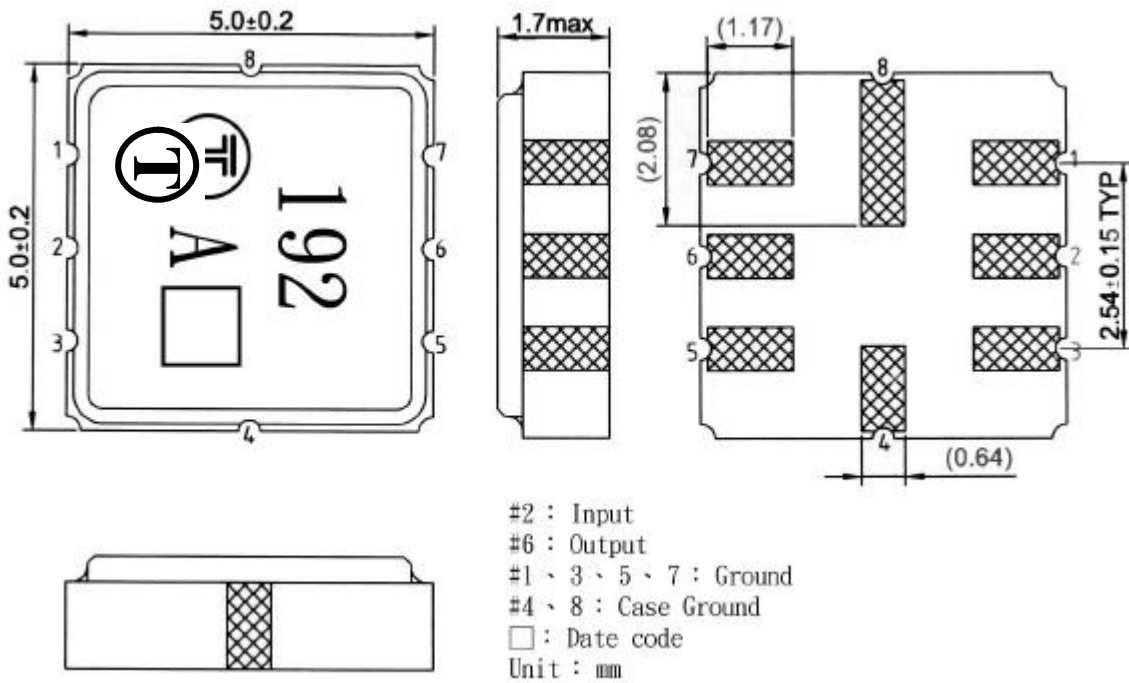
Note2.



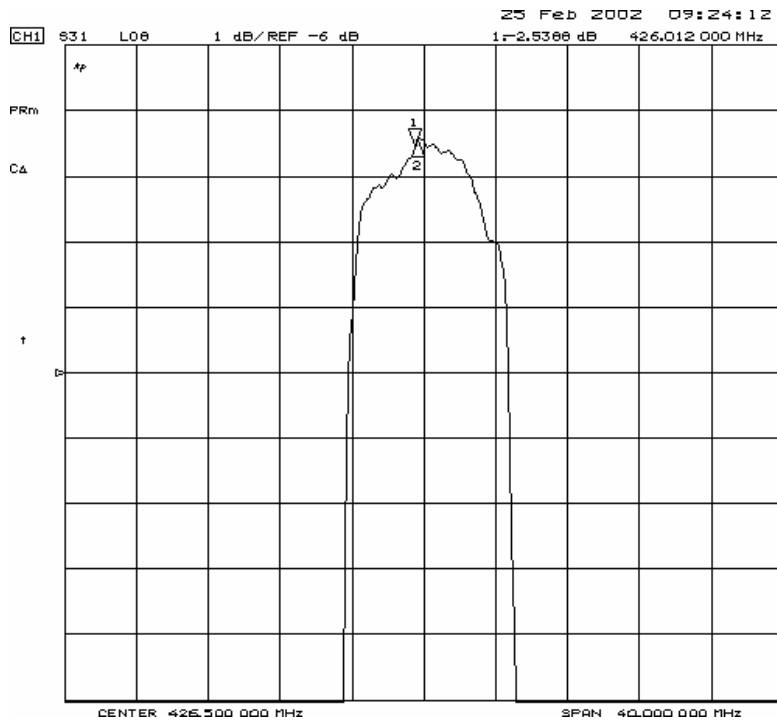
C. MEASUREMENT CIRCUIT:



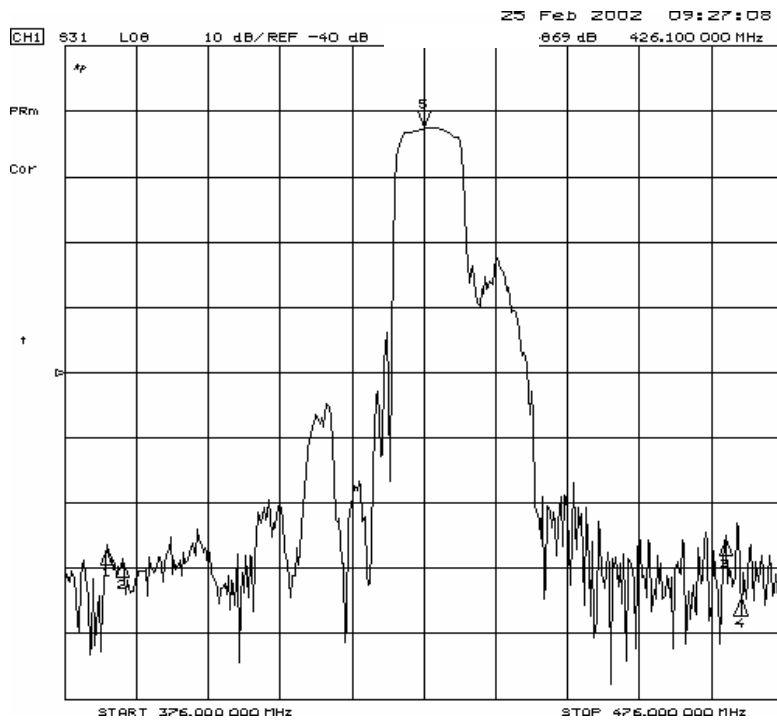
D. OUTLINE DRAWING:



E. FREQUENCY CHARACTERISTICS:



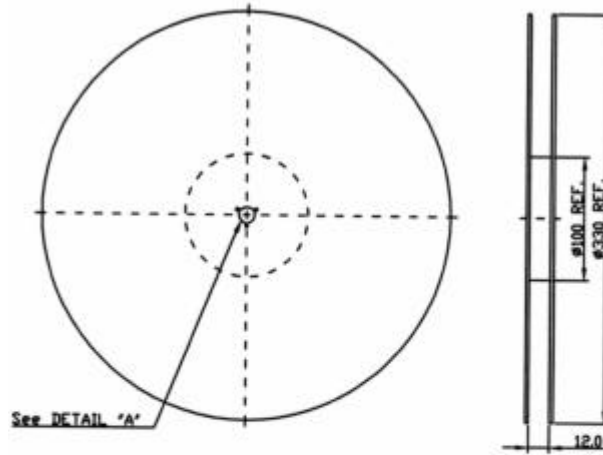
CH1 Marker s
 1:-2.4523 dB
 426.150 MHz



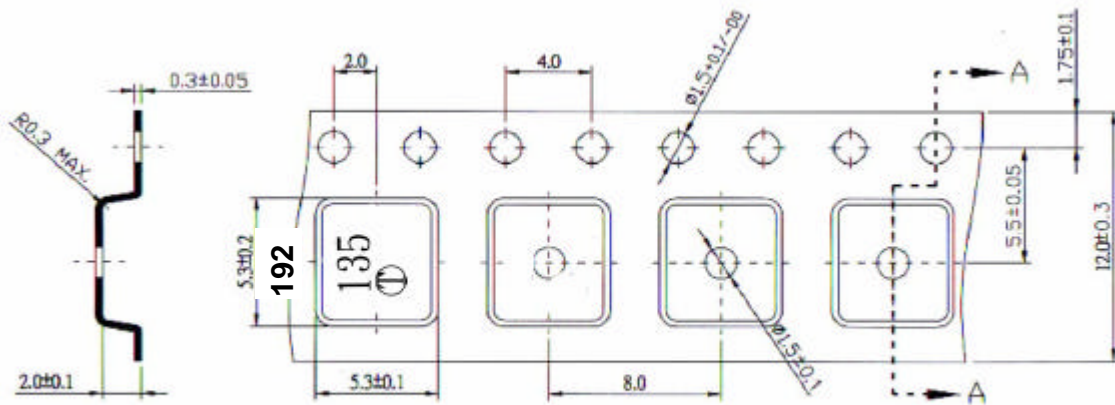
CH1 Marker s
 1:-66.822 dB
 382.012 MHz
 2:-69.663 dB
 384.150 MHz
 3:-65.359 dB
 469.012 MHz
 4:-74.326 dB
 470.150 MHz

G. PACKING:

1. REEL DIMENSION



2. TAPE DIMENSION



Section A-A