

	FDA 215	Units
Open Circuit Voltage	5	V
Short Circuit Current	3.5	uA
Input Control Current	5	mA

Features

- Optically-Isolated Input to Output
- May be Configured for AC and DC Switching
- 5mA Control Current
- No EMI/RFI Generation
- Machine Insertable, Wave Solderable
- Surface Mount and Tape Reel Versions Available
- Dual Independent, Floating Outputs for Parallel, Series, or Isolated Configuration
- Replacement of Discrete Components
- Solid State Reliability
- VDE compatible

Applications

- MOSFET Driver
- Programmable Control
- Process Control
- Instrumentation
- Telecommunications

Description

The FDA215 is a dual photovoltaic MOSFET driver that uses a pair of optically coupled GaAlAs LEDs to drive two photodiode arrays. When the input current is applied to the LED, the light emitted will activate the photodiode array and generate a voltage at the output. The photodiode arrays are capable of generating a floating source voltage and current sufficient to drive high power MOSFET transistors. The optical coupling provides a high level of input to output isolation. The FDA215 is well suited for use in discrete solid state relay designs and other isolated switching applications.

Approvals

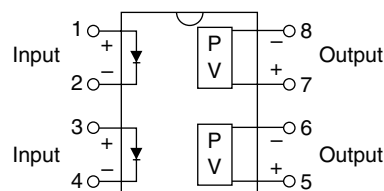
- UL recognized file #: E76270
- CSA certified file #: LR 43639-12
- BSI Certified:
 - BS EN 60950:1992 (BS7002:1992)
Certificate #:7344
 - BS EN 41003:1993
Certificate #:7344

Ordering Information

Part #	Description
FDA215	8 Pin DIP (50/tube)
FDA215S	8 Pin Surface Mount (1000/reel)

Pin Configuration

FDA215 Pinout



**Absolute Maximum Ratings (@ 25° C)**

Parameter	Min	Typ	Max	Units
Input Power Dissipation	-	-	150 ¹	mW
Input Control Current	-	-	100	mA
Peak (10ms)	-	-	1	A
Reverse Input Voltage	-	-	5	V
Power Dissipation				
Total Package Dissipation	-	-	500 ²	mW
Isolation Voltage				
Input to Output	3750	-	-	V _{RMS}
Operational Temperature	-40	-	+85	°C
Storage Temperature	-40	-	+125	°C
Soldering Temperature				
DIP Package	-	-	+260	°C
Surface Mount Package (10 Seconds Max.)	-	-	+220	°C

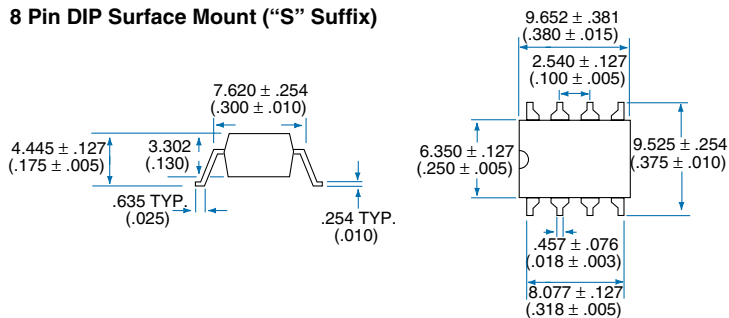
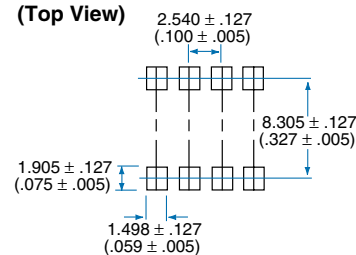
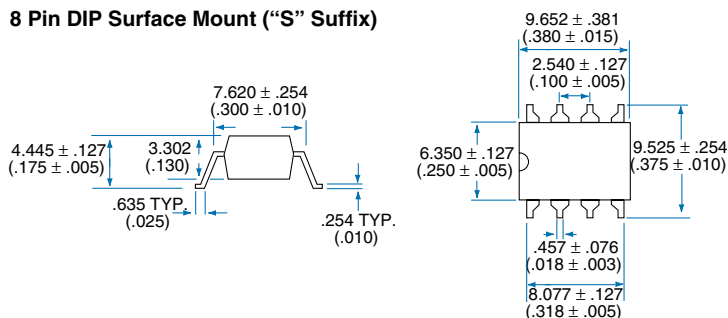
¹ Derate Linearly 1.33 mw/°C² Derate Linearly 6.67 mw/°C

Absolute Maximum Ratings are stress ratings. Stresses in excess of these ratings can cause permanent damage to the device. Functional operation of the device at these or any other conditions beyond those indicated in the operational sections of this data sheet is not implied. Exposure of the device to the absolute maximum ratings for an extended period may degrade the device and effect its reliability.

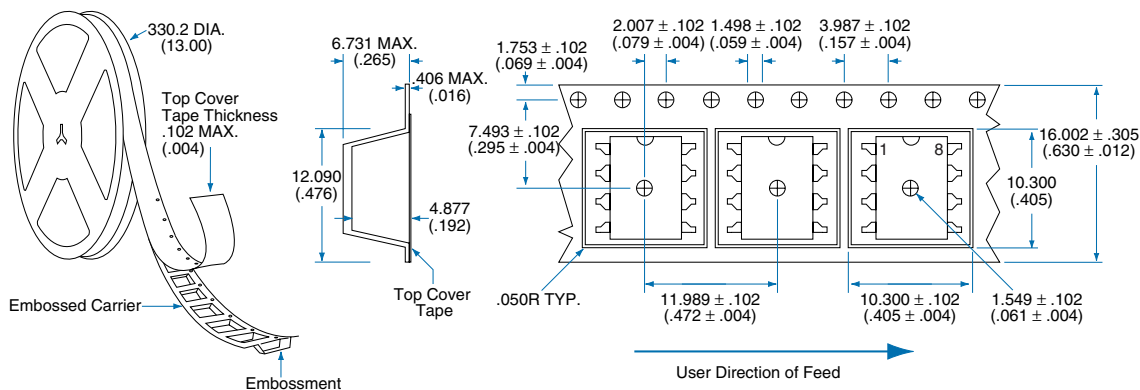
Electrical Characteristics

Parameter	Conditions	Symbol	Min	Typ	Max	Units
Output Characteristics @ 25°C						
Load Voltage	-	V _L	-	-	10	V
Load Current	-	I _L	-	-	1	μA
Open Circuit Voltage	I _F =5mA	V _{OC}	-	5.5	8	V
Short Circuit Current	I _F =5mA	I _{SC}	1.0	2.5	-	μA
Short Circuit Current	I _F =25mA	I _{SC}	2.5	3.5	-	μA
Switching Speeds						
Turn-on	I _F =5 mA, C _{LOAD} =200pF	T _{ON}	-	-	5.0	mS
Turn-off	I _F =5 mA, C _{LOAD} =200pF	T _{OFF}	-	-	5.0	mS
Offstate Clamping Resistance	-	R _{CL}	-	0.25	3.3	KΩ
Capacitance Input to Output			-	3	-	pF
Input Characteristics @ 25°C						
Control Current	-	I _F	5	-	100	mA
Input Voltage Drop	I _F =5mA	V _F	0.9	1.2	1.4	V
Reverse Input Voltage	-	V _R	-	-	5	V
Reverse Input Current	-	I _R	-	-	10	μA
Common Characteristics @ 25°C						
Input to Output Capacitance	-	C _{I/O}	-	3	-	pF
Input to Output Isolation	-	V _{I/O}	3750	-	-	V _{RMS}

MECHANICAL DIMENSIONS

8 Pin DIP Surface Mount ("S" Suffix)

**PC Board Pattern
(Top View)**

8 Pin DIP Surface Mount ("S" Suffix)


8 Pin Dip Package

Tape and Reel Packaging for 8 Pin Surface Mount Package


Dimensions
mm
(inches)



CLARE

For additional information please visit our website at: www.clare.com

Clare, Inc. makes no representations or warranties with respect to the accuracy or completeness of the contents of this publication and reserves the right to make changes to specifications and product descriptions at any time without notice. Neither circuit patent licenses nor indemnity are expressed or implied. Except as set forth in Clare's Standard Terms and Conditions of Sale, Clare, Inc. assumes no liability whatsoever, and disclaims any express or implied warranty, relating to its products including, but not limited to, the implied warranty of merchantability, fitness for a particular purpose, or infringement of any intellectual property right.

The products described in this document are not designed, intended, authorized or warranted for use as components in systems intended for surgical implant into the body, or in other applications intended to support or sustain life, or where malfunction of Clare's product may result in direct physical harm, injury, or death to a person or severe property or environmental damage. Clare, Inc. reserves the right to discontinue or make changes to its products at any time without notice.

Specification: DS-FDA215-R3.0
©Copyright 2002, Clare, Inc.
All rights reserved. Printed in USA.
5/10/02