



FEATURES

- 3K Ω Transresistance
- Low Noise: < 3pA/ $\sqrt{\text{Hz}}$
- 2 GHz Analog Bandwidth
- Wide Dynamic Range
- Good Sensitivity and High Bit Rates
- Low Distortion

APPLICATIONS

- SONET OC-48 Receiver
- Wideband Gain Block
- Low Noise RF Amplifier

ELECTRICAL SPECIFICATIONS: ($T_A = 25^\circ\text{C}$, $V_{DD} = +5\text{V}$, $V_{SS} = -5\text{V}$, $C_{DIODE} + C_{STRAY} = 0.4\text{pF}$)

DC CHARACTERISTICS	MIN	TYP	MAX	UNIT
Transresistance ($R_L = \infty$)	2.5	2.9	3.2	K Ω
Input Impedance		50		Ω
Supply Current V_{DD}	70	100	140	mA
V_{SS}		70	90	mA
Output Drive Current Source/Sink ¹		10		mA
Output Offset Voltage		+0.1		V
Input Bias Voltage	- 0.8	- 0.6	- 0.1	V
Operating Temperature Range	0		+ 85	$^\circ\text{C}$
Operating Voltage Range V_{DD}	4.5	5.0	6.0	V
V_{SS}	- 6	- 5	- 4	V

AC CHARACTERISTICS	MIN	TYP	MAX	UNIT
Transresistance $f = 300\text{MHz}$ $R_L = 50$	1.4	1.8	2.3	K Ω
Input Capacitance		0.6		pF
3 dB Bandwidth		2		GHz
Output Impedance	10	15	30	Ω
Input Noise Current, 150 KHz - 1 GHz		165	230	nA RMS
1 GHz - 2.5 GHz		400	600	nA RMS
Gain Flatness (150 KHz - 500 MHz)		± 0.5	± 1	dB
Peaking (Relative to 100 MHz)		1.5	2.5	dB
Input 1 dB Compression (100 Mb/s)	500	600		$\mu\text{Ap-p}$

¹ CAUTION: Output is not short circuit protected.

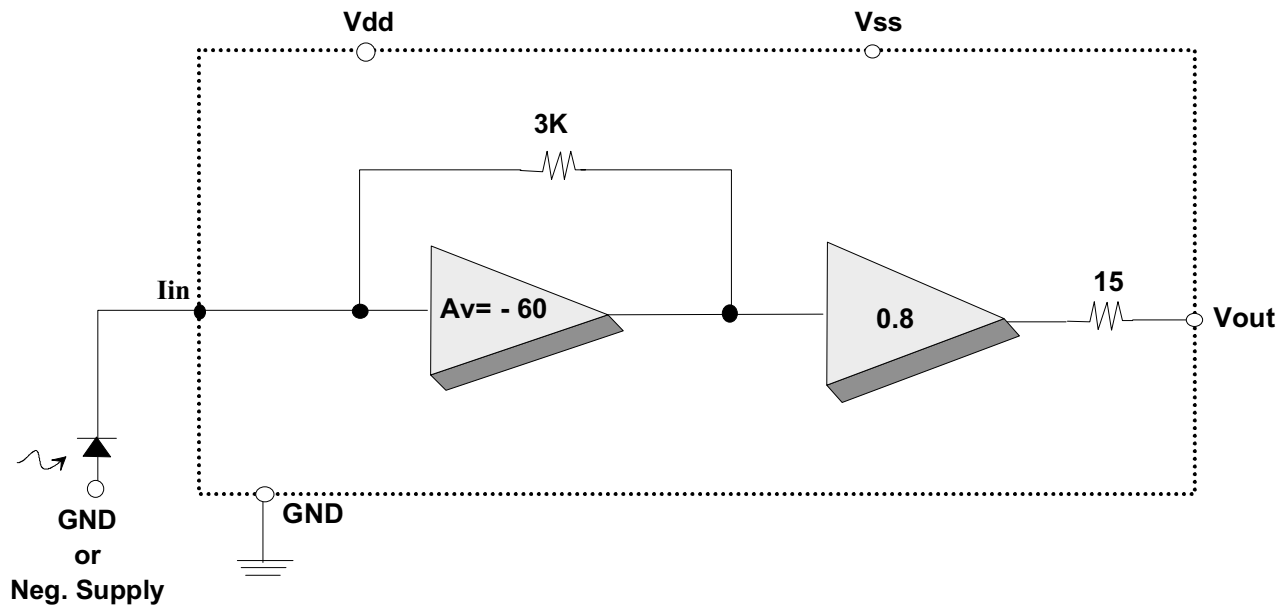
ABSOLUTE MAXIMUM RATINGS

V_{DD}	7.0V
T_a	Operating Temp. - 40°C to 125°C
T_s	Storage Temp. - 65°C to 150°C

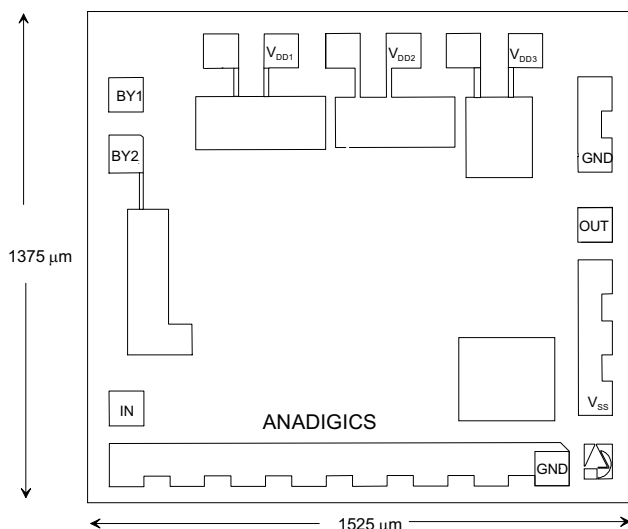
ATA30013 PAD DESCRIPTION

PAD	DESCRIPTION	COMMENT
V_{DD}	Positive Supply Voltage	
V_{SS}	Negative Supply Voltage	
I_{IN}	TIA Input Current	
V_{out}	TIA Output Voltage	Requires External DC Block

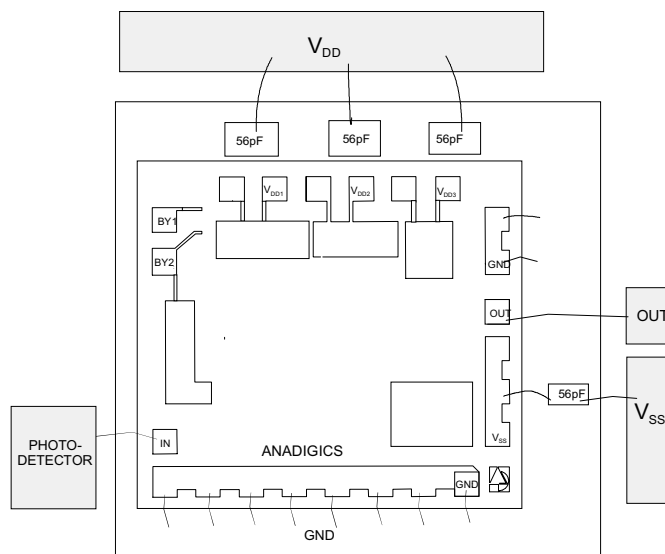
ATA30013 EQUIVALENT CIRCUIT



ATA30013 BOND PAD LAYOUT



ATA30013 BONDING DIAGRAM



V_{OUT} CONNECTION

The output pad should be connected via a coupling capacitor to the next stage of the receiver (filter or decision circuits), as the output buffers are not designed to drive a DC coupled 15 ohm load. If V_{out} is connected to a high input impedance decision circuit ($>500 \Omega$), then a coupling capacitor may not be required, although caution should be exercised since DC offsets of the photo detector/TIA combination may cause clipping of subsequent gain or decision circuits.

POWER SUPPLIES AND GENERAL LAYOUT CONSIDERATIONS

The ATA30013 may be operated from a positive supply as low as + 4.5 V and as high as + 6.0 V. Below + 4.5 V, bandwidth and sensitivity will degrade, while at + 6.0 V, bandwidth, and sensitivity improve. The device is much less sensitive to the same changes in V_{ss} . Use of surface mount (preferably MIM type capacitors), low inductance power supply bypass capacitors ($\geq 56\text{pF}$) are essential for good high frequency and low noise performance. The power supply bypass capacitors should be mounted on or connected to a good low inductance ground plane.

GENERAL LAYOUT CONSIDERATIONS

Since the gain stages of the transimpedance amplifier have an open loop bandwidth in excess of 2.0 GHz, it is essential to maintain good high frequency layout practices. To prevent oscillations, a low inductance RF ground plane should be made available for power supply bypassing. Traces that can be made short should be made short, and the utmost care should be taken to maintain very low capacitance at the photodiode-TIA interface (I_{in}), as excess capacitance at this node will cause a degradation in bandwidth and sensitivity.

SENSITIVITY AND BANDWIDTH

In order to guarantee sensitivity and bandwidth performance, the TIA is subjected to an extensive series of tests at the die sort level (100% testing at 25°C) to verify the DC parametric performance and the high frequency performance (i.e. adequate $|S_{21}|$) of the amplifier. Acceptably high $|S_{21}|$ of the internal gain stages will ensure low amplifier input capacitance, and hence, low input reference noise current. Transimpedance sensitivity and bandwidth are then guaranteed by design and correlation with RF and DC die sort test results.

ANADIGICS, Inc.
35 Technology Drive
Warren, New Jersey 07059
Tel: (908) 668-5000 F: (908) 668-5132
Mktg@anadigics.com

IMPORTANT NOTICE

ANADIGICS reserves the right to make changes to its products or discontinue any product at any time without notice. The Advanced Product data sheets and product specifications contained in this data sheet are subject to change prior to products formal introduction. The information in this datasheet has been carefully checked and is assumed to be reliable. However, ANADIGICS assumes no responsibility for inaccuracies. ANADIGICS strongly urges customers to verify that the information they are using is current before placing orders.

WARNING

ANADIGICS products are not intended for use in life support appliances, devices, or systems. Use of an ANADIGICS product in any such application without written consent is prohibited.