

### FEATURES

**Eight Differential Line Receivers in One Package**  
 Meets EIA Standard EIA-232E, 423A, 422A and CCITT V.10, V.11, V.28  
**Single +5 V Supply**  
**Differential Inputs Withstand  $\pm 25$  V**  
**Internal Hysteresis**  
**Low Power CMOS -3.5 mA Supply Current**  
**TTL/CMOS Compatible Outputs**  
**Available in 28-Pin DIP and PLCC Packages**  
**Low Power Replacement for UC5180C/NE5180**

### APPLICATIONS

**High Speed Communication**  
**Computer I-O Ports**  
**Peripherals**  
**High Speed Modems**  
**Printers**  
**Logic Level Translation**

### GENERAL DESCRIPTION

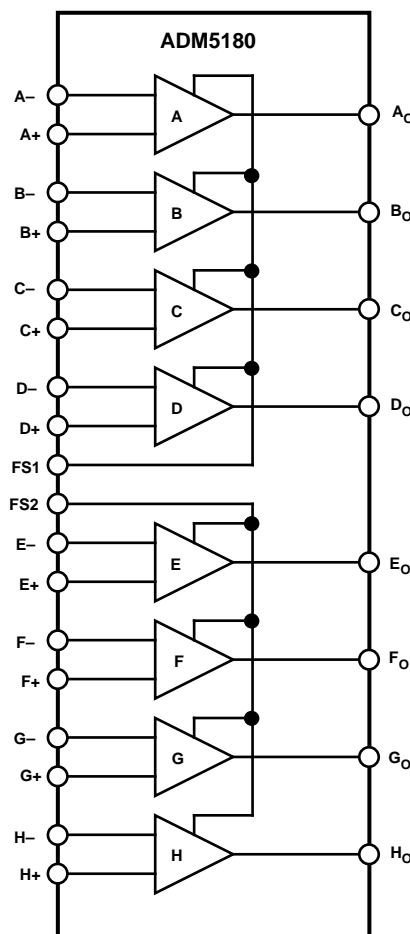
The ADM5180 is an octal differential line receiver suitable for a wide range of digital communication systems with data rates up to 200 kB/s. Input signals conforming to EIA Standards 232-E, 422A and CCITT V.10, V.11, V.28, X.26, and X.27 are accepted and translated into TTL /CMOS output signal levels.

The ADM5180 is a superior upgrade for the UC5180C and the NE5180. It is fabricated on an advanced BiCMOS process, allowing high speed bipolar circuitry to be combined with low power CMOS. This minimizes the power consumption to less than 25 mW.

A failsafe function ensures a known output state under a variety of input fault conditions as defined in RS-422A and RS-423A. The failsafe function is controlled by FS1 and FS2. Each controls four receivers. With FS = Low and a fault condition the output is forced low while if FS = High, the output is forced high.

The device is available in both 28-pin DIP and 28-lead PLCC packages.

### FUNCTIONAL BLOCK DIAGRAM



**Truth Table**

Differential Input (+) - (-)	Failsafe Input FS1, FS2	Receiver Logic Output
>200 mV	X	H
<-200 mV	X	L
O/C	L	L
S/C	L	L
O/C	H	H
S/C	H	H

### REV. 0

Information furnished by Analog Devices is believed to be accurate and reliable. However, no responsibility is assumed by Analog Devices for its use, nor for any infringements of patents or other rights of third parties which may result from its use. No license is granted by implication or otherwise under any patent or patent rights of Analog Devices.

# ADM5180—SPECIFICATIONS ( $V_{DD} = +5\text{ V} \pm 5\%$ , Input Common-Mode Range = $\pm 7\text{ V}$ . All Specifications $T_{MIN}$ to $T_{MAX}$ unless otherwise noted.)

Parameter	Min	Typ	Max	Units	Test Conditions/Comments
<b>POWER REQUIREMENTS</b>					
$V_{DD}$	4.75		5.25	V	
$I_{DD}$		3.5	5	mA	
<b>INPUTS</b>					
Input Resistance, $R_{IN}$	3		7	k $\Omega$	$3\text{ V} \leq  V_{IN}  \leq 25\text{ V}$
Differential Input High Threshold, $V_{TH}$	50		200	mV	$R_S = 0\ \Omega$ , $V_{OUT} = 2.7\text{ V}$ , $I_{OUT} = -440\ \mu\text{A}$ , See Figure 1
			400	mV	$R_S = 500\ \Omega$ , $V_{OUT} = 2.7\text{ V}$ , $I_{OUT} = -440\ \mu\text{A}$ , See Figure 1
Differential Input Low Threshold, $V_{TL}$	-200		-50	mV	$R_S = 0\ \Omega$ , $V_{OUT} = 0.45\text{ V}$ , $I_{OUT} = 8\text{ mA}$ , See Figure 1
	-400			mV	$R_S = 500\ \Omega$ , $V_{OUT} = 0.45\text{ V}$ , $I_{OUT} = 8\text{ mA}$ , See Figure 1
Hysteresis, $V_H$	50		140	mV	FS1, FS2 = 0 V or $V_{DD}$ , See Figure 1
Open Circuit Input Voltage, $V_{IOC}$			60	mV	
Input Capacitance			20	pF	
Input Current, $I_{IN}$			3.25	mA	$V_{IN} = +10\text{ V}$
	-3.25			mA	$V_{IN} = -10\text{ V}$
<b>OUTPUTS</b>					
High Level Output Voltage, $V_{OH}$	2.7			V	$V_{ID} = 1.0\text{ V}$ , $I_{OUT} = -440\ \mu\text{A}$
Low Level Output Voltage, $V_{OL}$			0.4	V	$V_{ID} = -1.0\text{ V}$ , $I_{OUT} = 4\text{ mA}$
			0.45	V	$V_{ID} = -1.0\text{ V}$ , $I_{OUT} = 8\text{ mA}$ , $T_A = 0^\circ\text{C}$ to $+70^\circ\text{C}$
Short Circuit O/P Current, $I_{OS}$			100	mA	Note 1
<b>FAILSAFE FUNCTION</b>					
Fail-safe Output Voltage, $V_{OFS}$			0.40	V	Inputs Open or Shorted Together or One Input Open and One Grounded
			0.45	V	$0 \leq I_{OUT} \leq 4\text{ mA}$ ; FS1, FS2 = 0 V
	2.7			V	$0 \leq I_{OUT} \leq 8\text{ mA}$ , $T_A = 0^\circ\text{C}$ to $+70^\circ\text{C}$ ; FS1, FS2 = 0 V
FS1, FS2 Input Current	-10		+10	$\mu\text{A}$	$0 \geq I_{OUT} \geq -400\ \mu\text{A}$ ; FS1, FS2 = $V_{DD}$

## NOTE

<sup>1</sup>Only one output may be shorted at any time.

Specifications subject to change without notice.

## TIMING CHARACTERISTICS ( $V_{DD} = +5\text{ V} \pm 5\%$ . All Specifications $T_{MIN}$ to $T_{MAX}$ unless otherwise noted.)

Parameter	Min	Typ	Max	Units	Test Conditions/Comments
Propagation Delay–Low to High			550	ns	$C_L = 50\text{ pF}$ , $V_{IN} = \pm 500\text{ mV}$
Propagation Delay–High to Low			550	ns	$C_L = 50\text{ pF}$ , $V_{IN} = \pm 500\text{ mV}$
Acceptable Input Frequency			0.1	MHz	Unused Input Grounded, $V_{IN} = \pm 200\text{ mV}$
Rejectable Input Frequency	5.5			MHz	Unused Input Grounded, $V_{IN} = \pm 500\text{ mV}$

Specifications subject to change without notice.

## ABSOLUTE MAXIMUM RATINGS<sup>1</sup>

(T<sub>A</sub> = 25°C unless otherwise noted)

V <sub>DD</sub> .....	+7 V
Common-Mode Input Voltage .....	+15 V
Differential Input Voltage .....	+25 V
Failsafe Voltage .....	-0.3 V to V <sub>CC</sub>
Output Short Circuit Duration .....	Continuous <sup>2</sup>
Power Dissipation Plastic DIP .....	1250 mW
(Derate at 12.5 mW/°C Above +50°C)	
θ <sub>JA</sub> , Thermal Impedance .....	75°C/W
Power Dissipation PLCC .....	1000 mW
(Derate at 12.5 mW/°C Above +50°C)	
θ <sub>JA</sub> , Thermal Impedance .....	+80°C/W

## Operating Temperature Range

Commercial (J Version) .....	0°C to +70°C
Industrial (A Version) .....	-40°C to +80°C
Lead Temperature (Soldering 10 sec) .....	+300°C
Vapour Phase (60 sec) .....	+215°C
Infrared (15 sec) .....	+220°C

## NOTES

<sup>1</sup>This is a stress rating only and functional operation of the device at these or any other conditions above those indicated in the operation sections of this specification is not implied. Exposure to absolute maximum rating conditions for extended periods of time may affect reliability.

<sup>2</sup>Only one output should be shorted at any time.

## CAUTION

ESD (electrostatic discharge) sensitive device. Electrostatic charges as high as 4000 V readily accumulate on the human body and test equipment and can discharge without detection. Although the ADM5180 features proprietary ESD protection circuitry, permanent damage may occur on devices subjected to high energy electrostatic discharges. Therefore, proper ESD precautions are recommended to avoid performance degradation or loss of functionality.

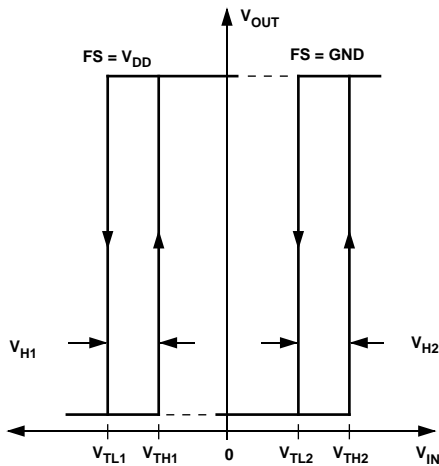


Figure 1. V<sub>TL</sub>, V<sub>TH</sub>, V<sub>H</sub> Definition

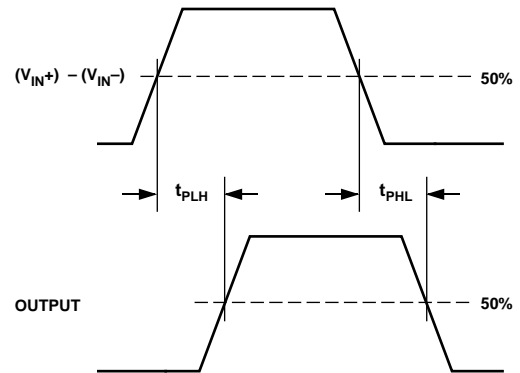


Figure 3. Timing Waveform

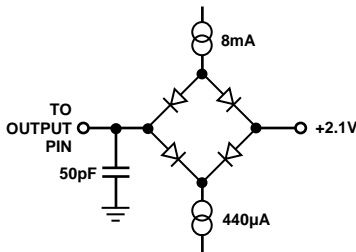


Figure 2. Timing Test Load

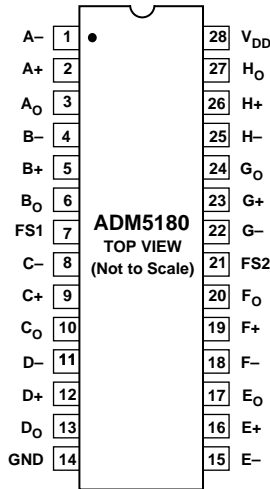
## ORDERING GUIDE

Model	Temperature Range	Package Option
ADM5180JN	0°C to +70°C	N-28
ADM5180AN	-40°C to +85°C	N-28
ADM5180JP	0°C to +70°C	P-28A
ADM5180AP	-40°C to +85°C	P-28A

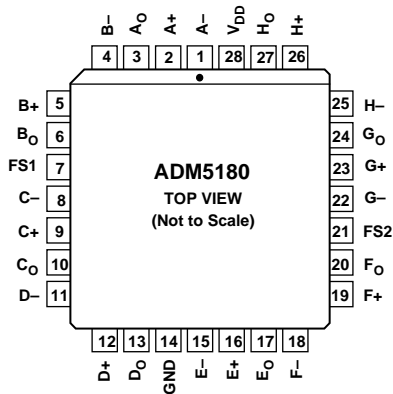
# ADM5180

## PIN CONFIGURATIONS

### DIP



### PLCC



## PIN DESCRIPTION

Mnemonic	Function
V <sub>DD</sub>	Power Supply Input, 5 V ± 5%.
GND	Ground Pin. Must be connected to 0 V.
A+ . . . H+	Noninverting Input to Differential Receivers A to H.
A- . . . H-	Inverting Input to Differential Receivers A to H.
A <sub>O</sub> . . . H <sub>O</sub>	Receiver Outputs A to H. A through D and FS2 controls receivers E through H.
FS1, FS2	Failsafe Control Inputs. FS1 controls receivers A through D and FS2 control Receiver E through H.

## APPLICATIONS INFORMATION

### FAILSAFE OPERATION

The ADM5180 provides a failsafe operating mode to guard against input fault conditions as defined in RS-422A and RS-423A standards. The fault conditions are (1) Driver in power-off condition, (2) Receiver not interconnected with Driver, (3) Open-circuited interconnecting cable, and (4) Short-circuited interconnecting cable. If any of these four fault conditions occurs at the inputs of a receiver, then the output of that receiver is driven to a known logic level. The failsafe level is programmed using the failsafe (FS) input. There are two failsafe inputs, FS1 and FS2 which each control four receivers. FS1 controls receivers A . . . D and FS2 controls receivers E . . . H. A connection to V<sub>DD</sub> on the failsafe input sets the output high under fault conditions while a connection to GND sets the output low.

FS1, FS2	Output During Fault Condition
V <sub>DD</sub>	High
GND	Low

### Input Filtering

The ADM5180 contains internal low pass filtering for additional noise rejection. Frequencies above the passband will be rejected. For the specified input (5.5 MHz at ±500 mV) the input stage attenuates the signal such that the threshold levels are not reached and therefore no change of state occurs on the output. The filtering is a function of both amplitude and frequency. As the signal amplitude decreases then the rejected frequency will decrease.

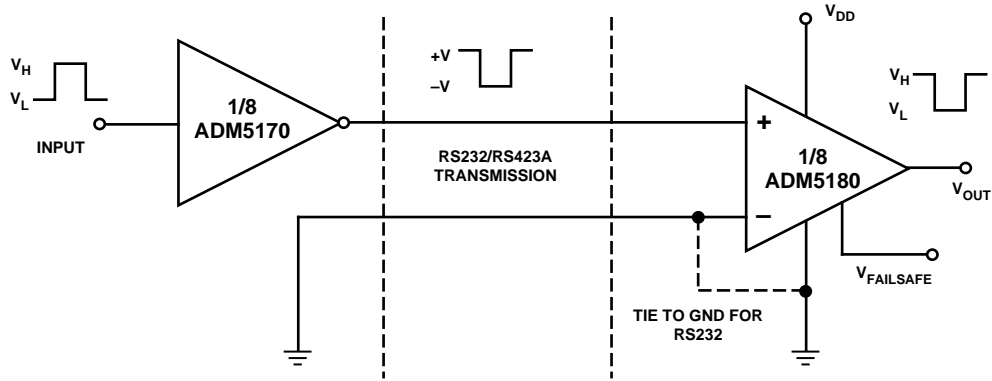


Figure 4. EIA-232/V.28 Data Transmission

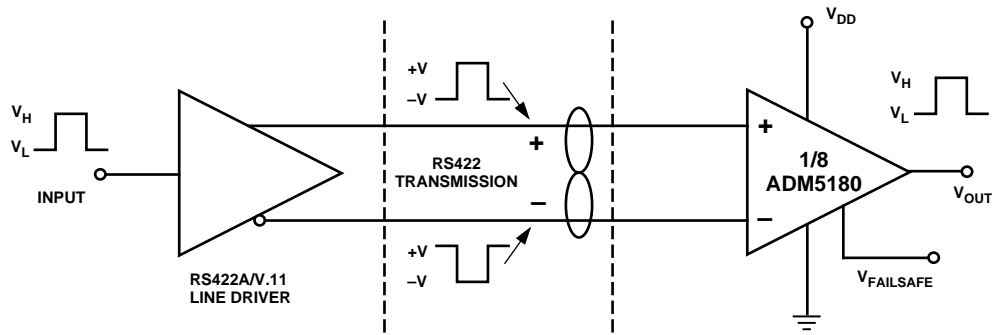


Figure 5. RS-422A/V.11 Data Transmission

## Typical Performance Characteristics

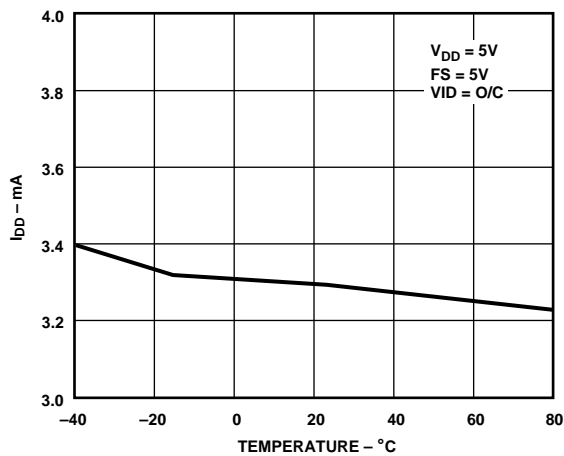


Figure 6. Supply Current vs. Temperature

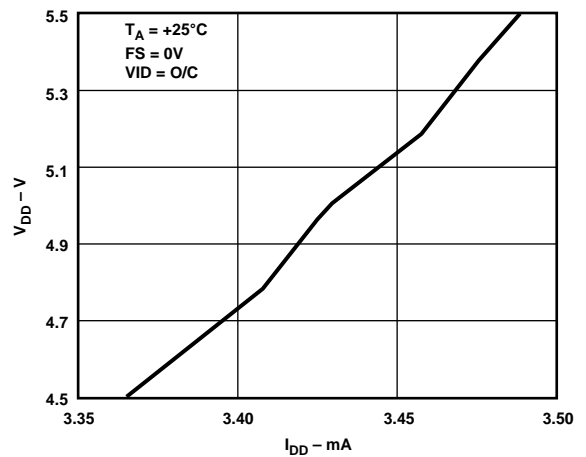


Figure 7. Supply Current vs. Supply Voltage

# ADM5180

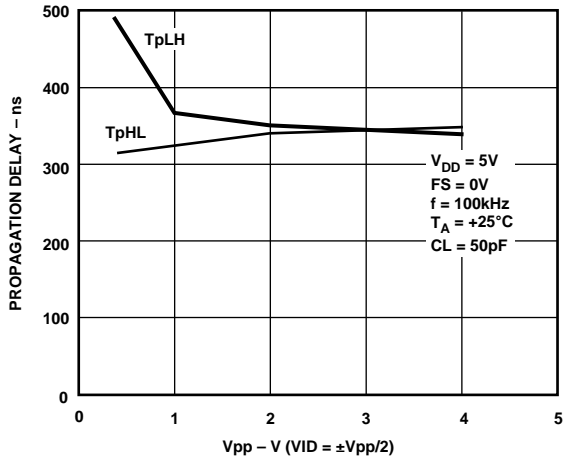


Figure 8. Propagation Delay vs. Amplitude

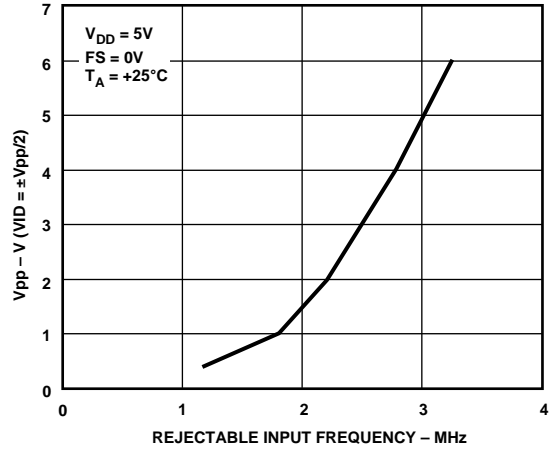


Figure 10. Rejectable Input Frequency vs. Amplitude

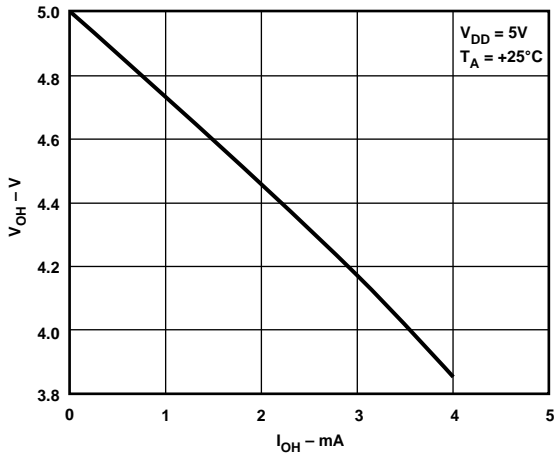


Figure 9. High Level Output Voltage vs. Output Source Current

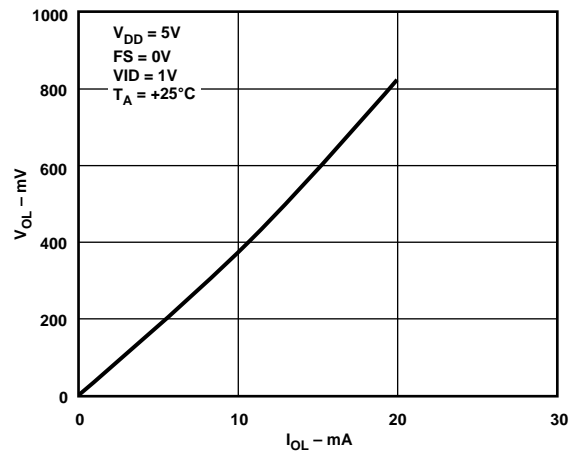
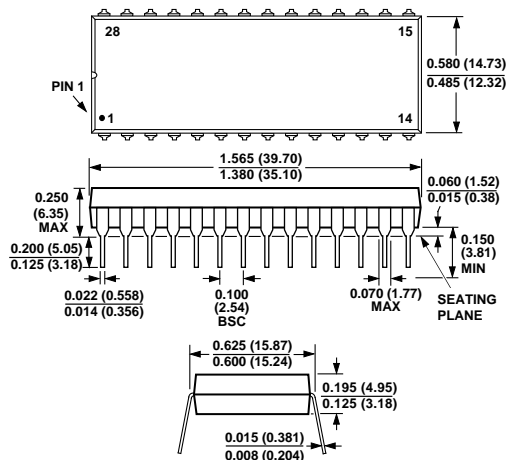


Figure 11. Low Level Output Voltage vs. Output Sink Current

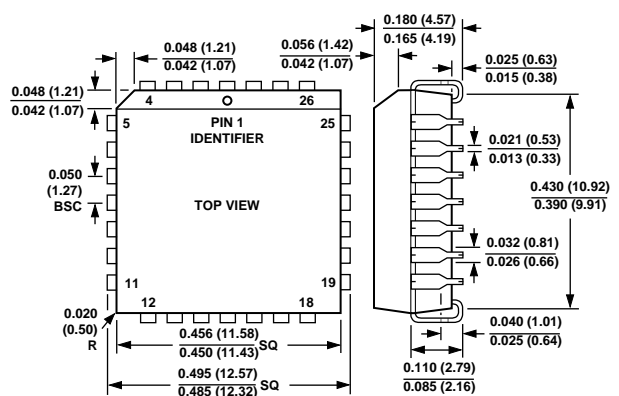
## OUTLINE DIMENSIONS

Dimensions shown in inches and (mm).

### 28-Lead Plastic DIP (N Suffix)



### 28-Lead Plastic Leaded Chip Carrier (PLCC) (P Suffix)



C1854-7.5-10/93

PRINTED IN U.S.A.